

PORSCHE PANAMERA INSTALLATION MANUAL

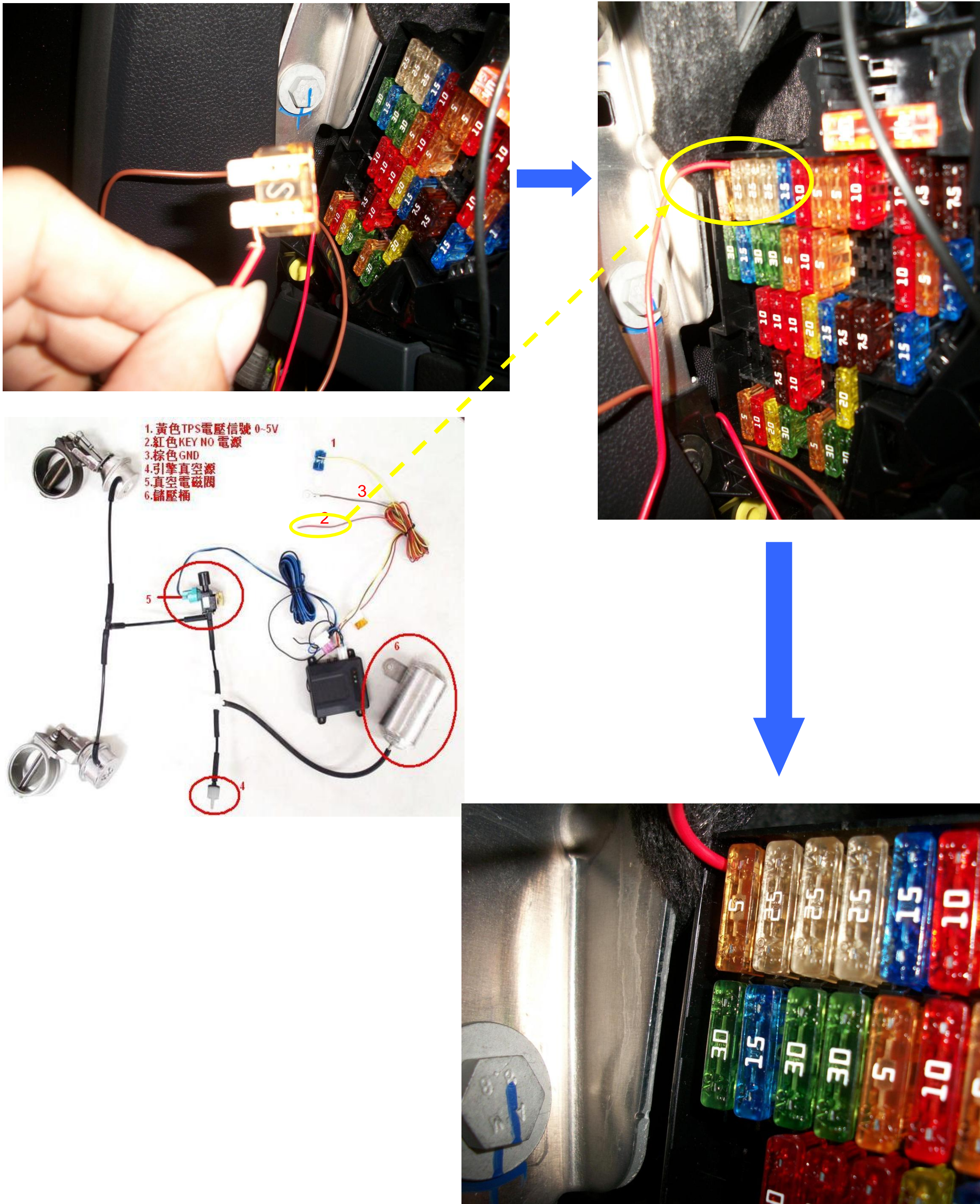
一、REMOTE CONTROL SYSTEM FOR YOUR REFERENCE

- 1. Yellow Cable: TPS voltage signal 0-5v
- 2. Brown Cable: GND
- 3. Red Cable: key on switch
- 4. One Way Valve
- 5. Vacuum Electric valve
- 6. Vacuum Canister



二、 SEARCH KEY OIV POWER⊕、GND⊖
AND TPS VOLTAGE SIGNAL 0~5V。

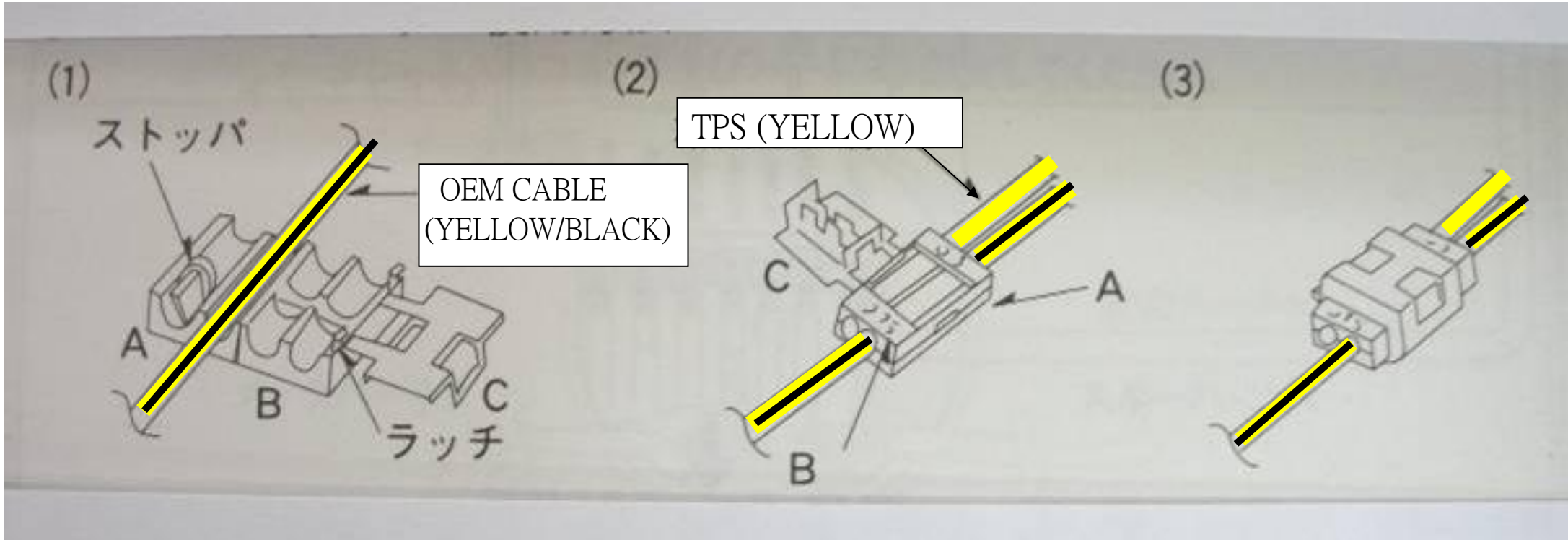
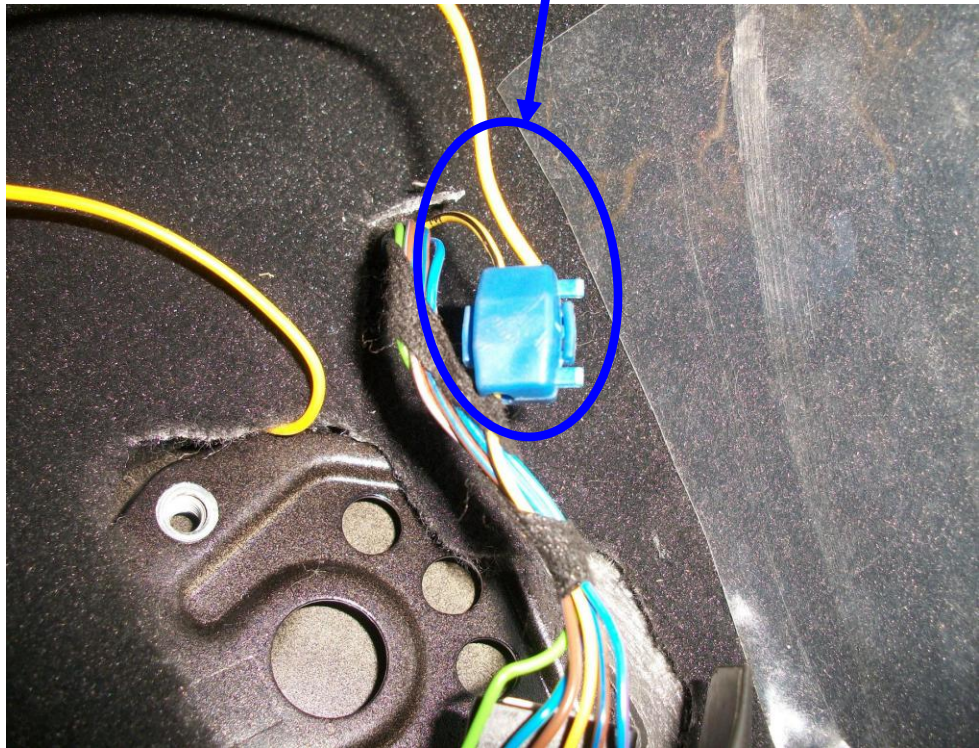
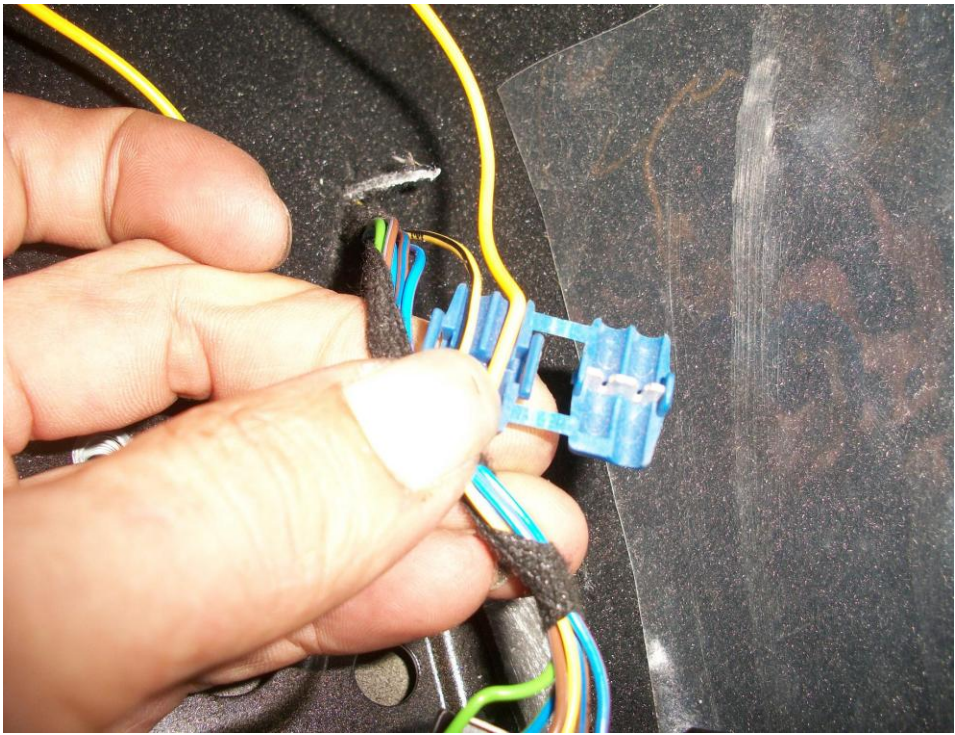
1、SEARCH KEY POWER⊕ AND CONNECT CABLE：

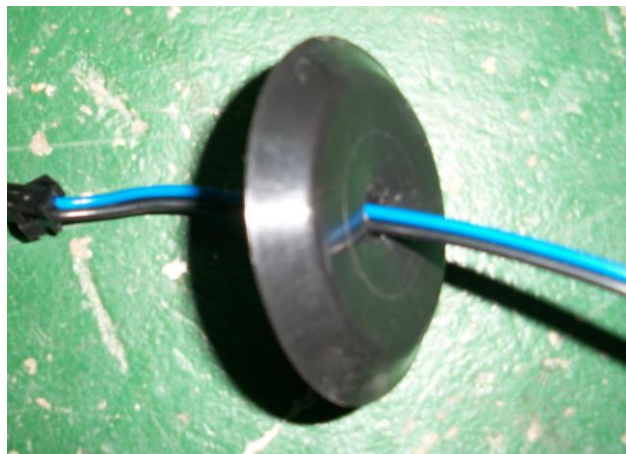


2、GND⓪：HANG ON GND(THE POSITION IS NEAR KEY POWER BOX)

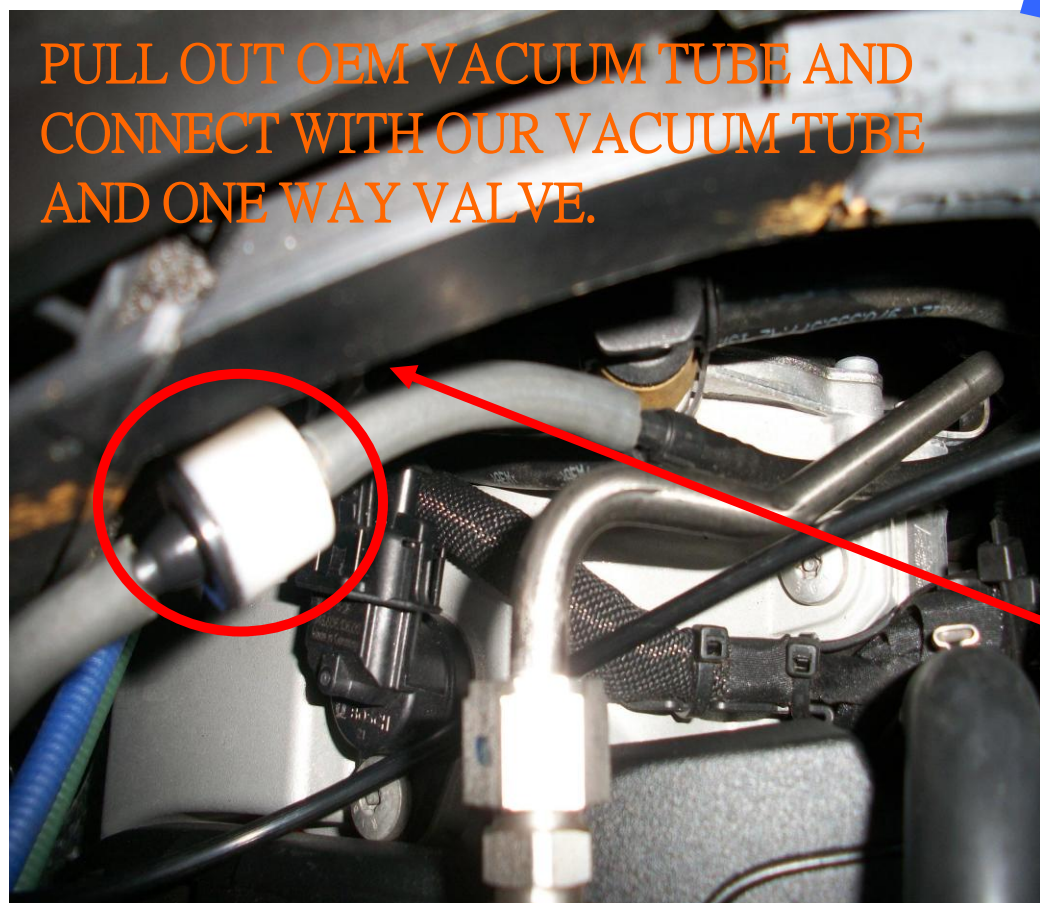
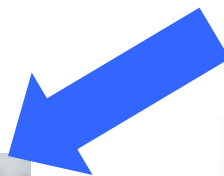
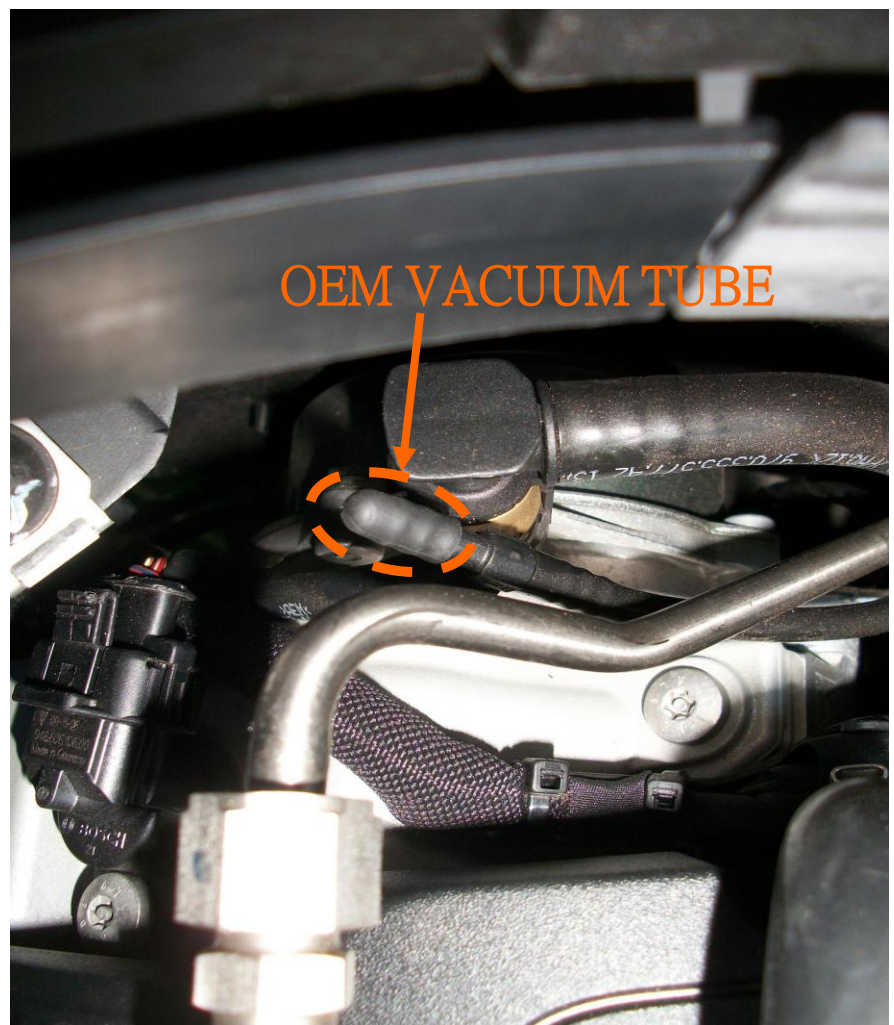


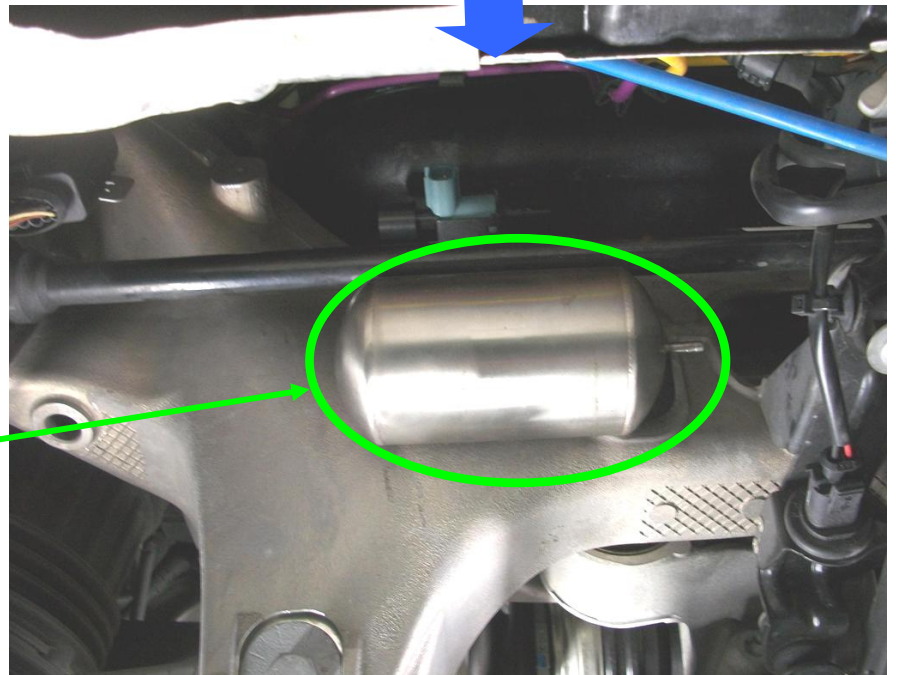
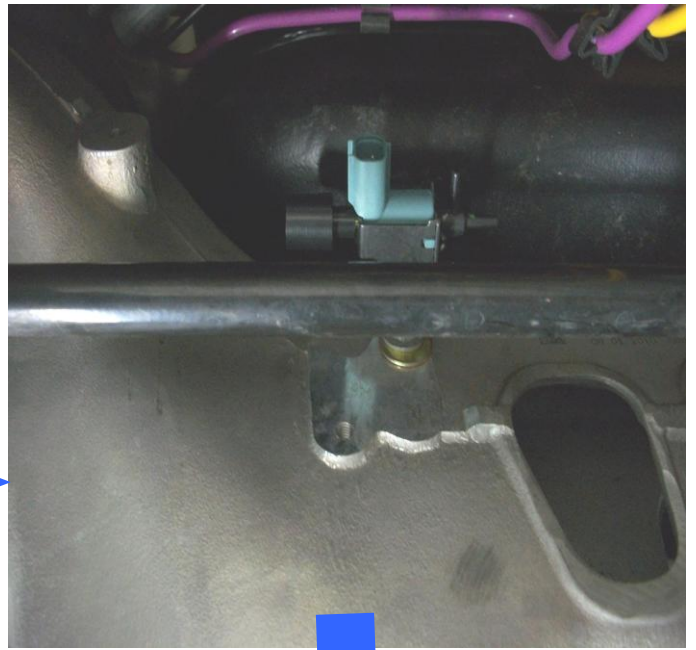
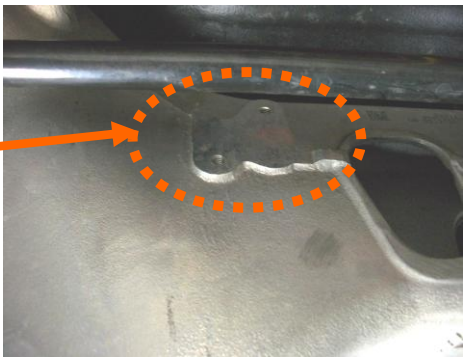
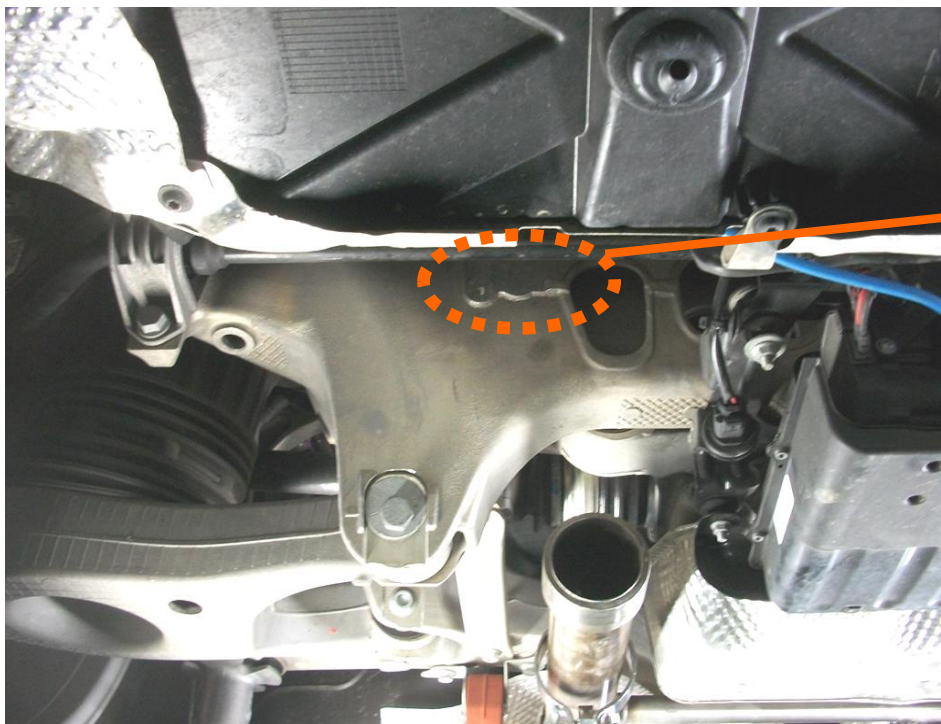
3、PUT TPS 0~5V(YELLOW CABLE) AND OEM WIRE SIDE BY SIDE .



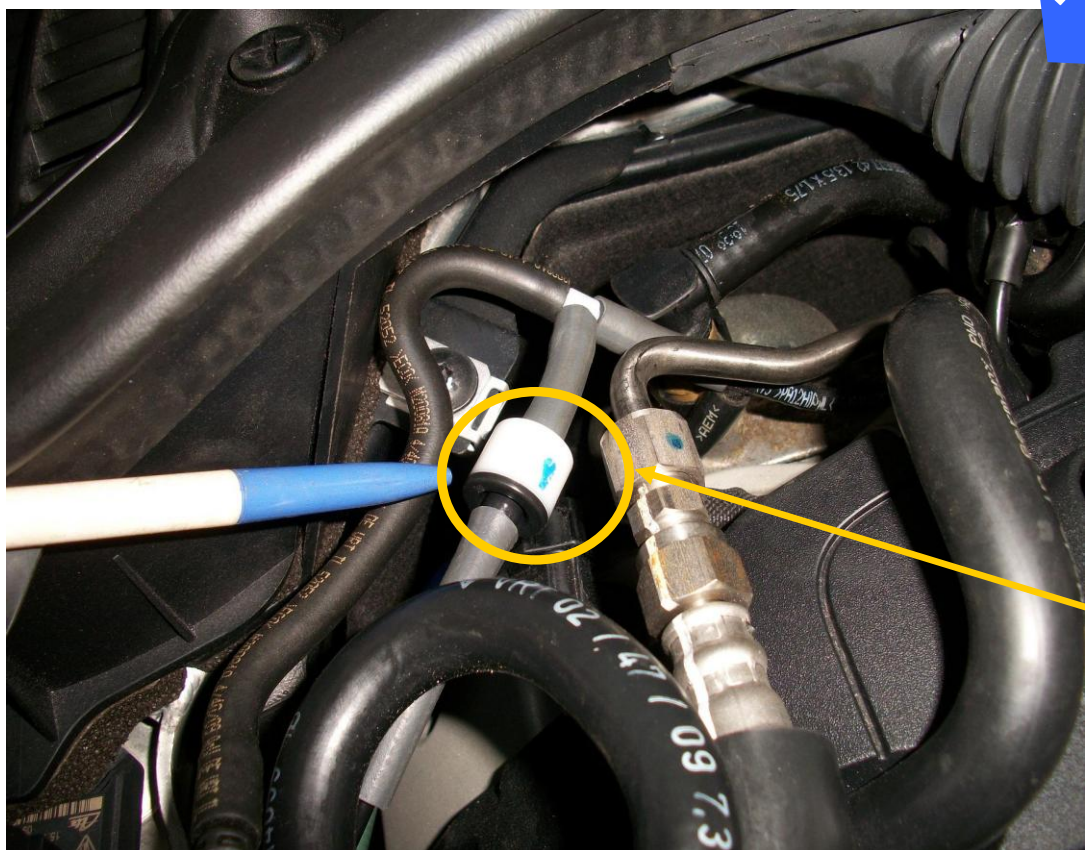


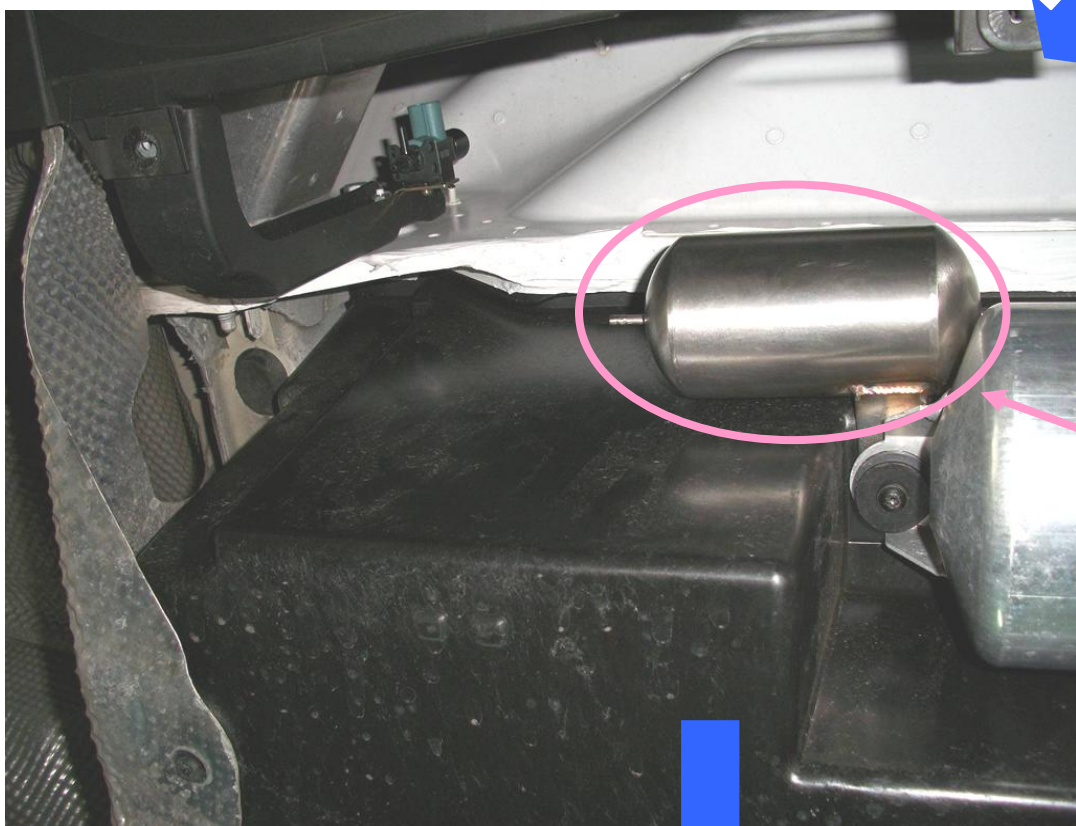
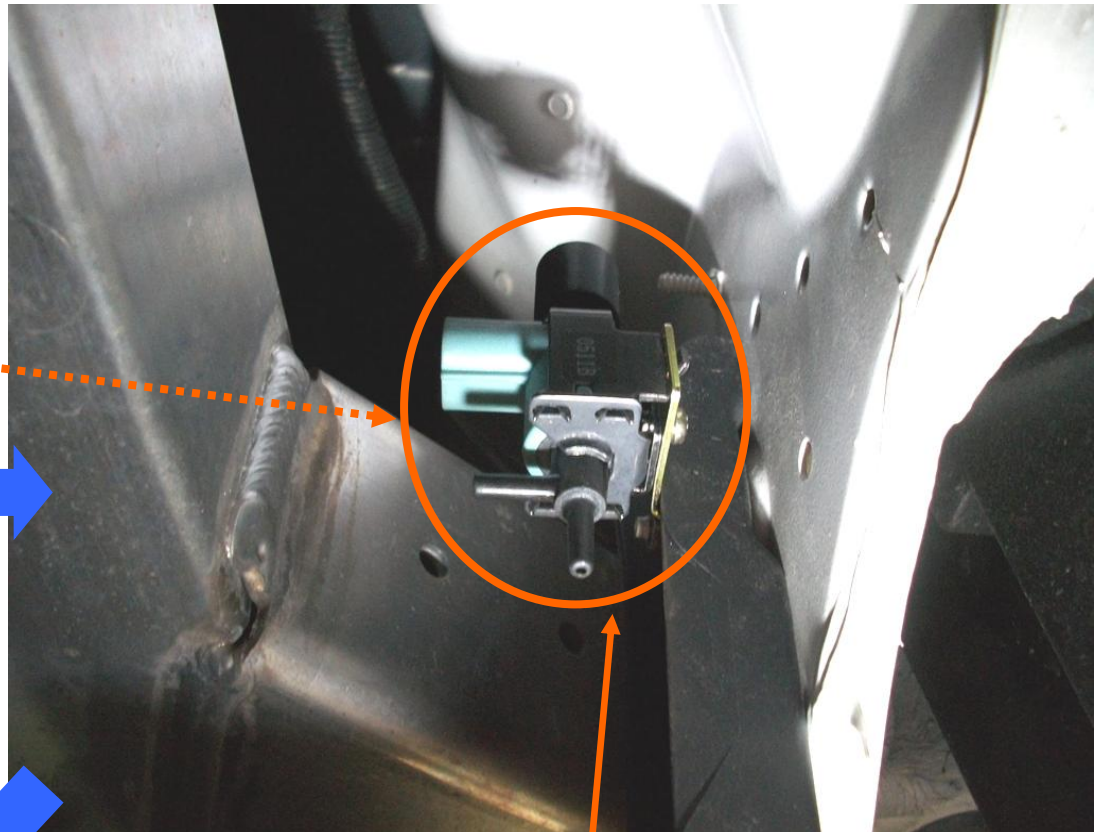
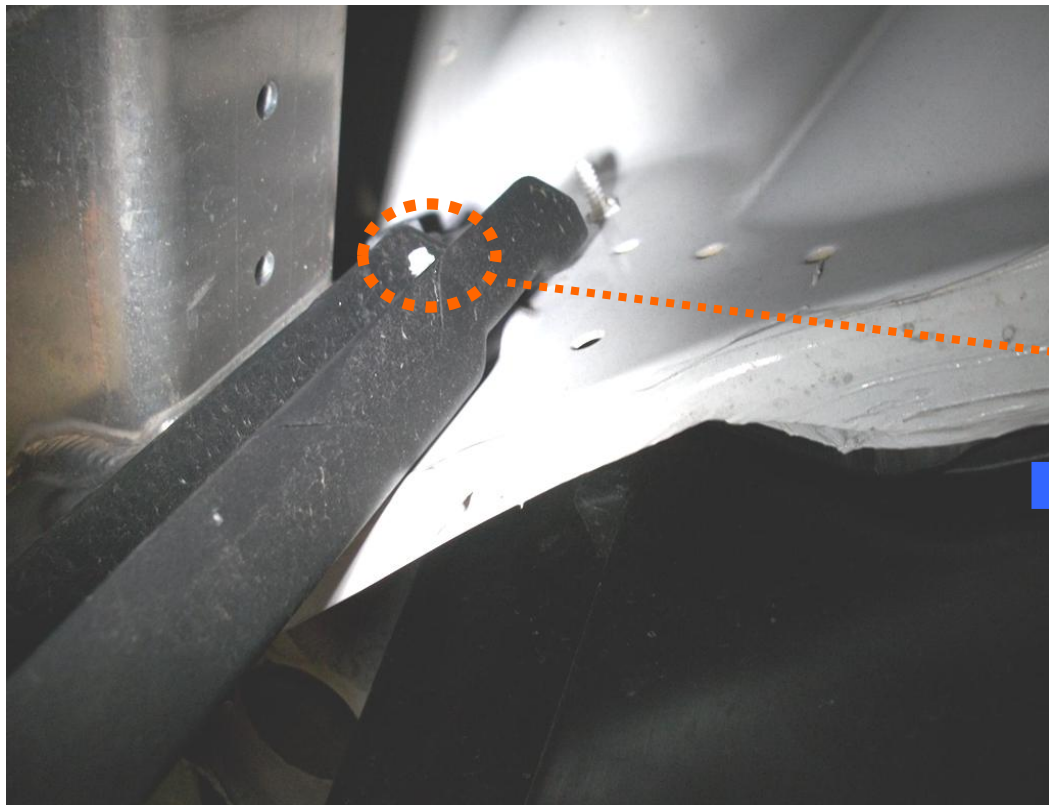
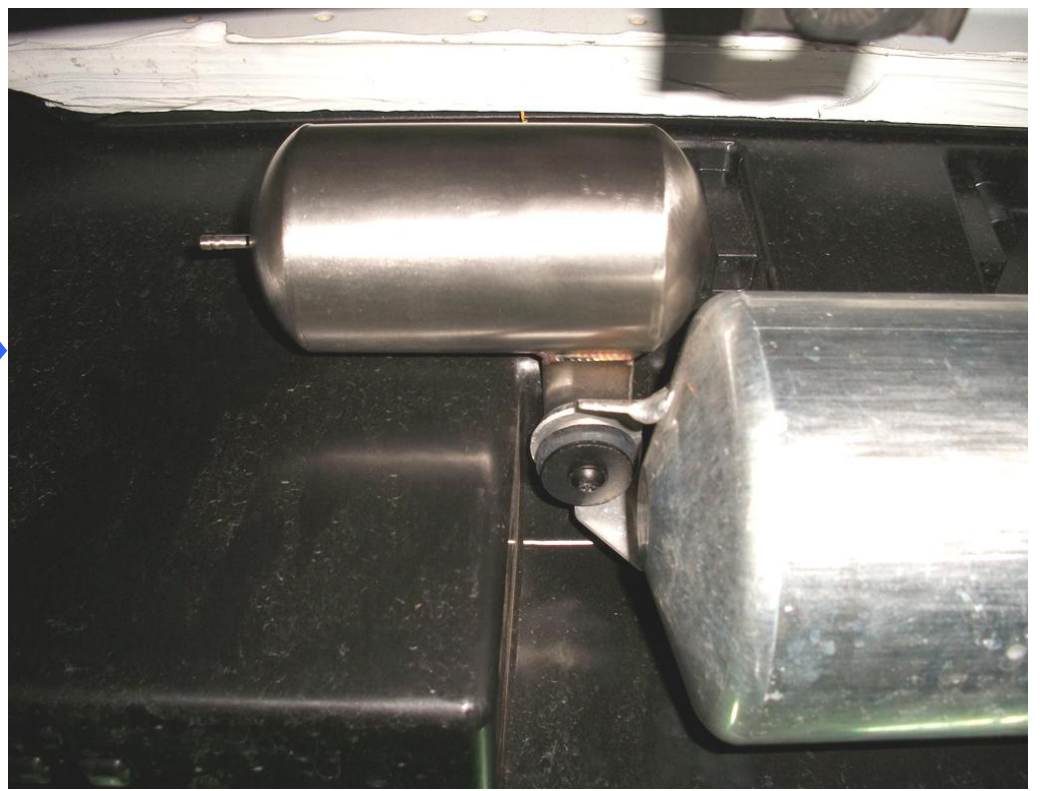
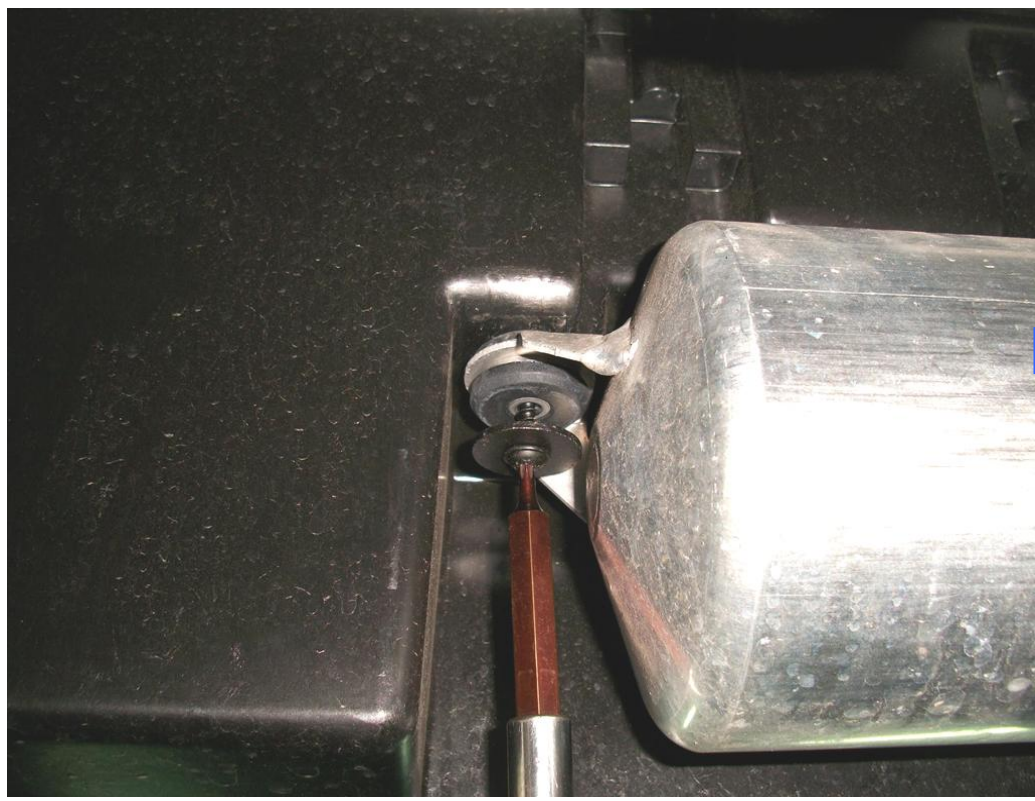
三、CONNECT VACUUM ELECTRIC VALVE、ONE WAY VALVE、VACUUM CANISTER(WITHOUT DIR SU





三、CONNECT VACUUM ELECTRIC VALVE、ONE WAY VALVE、 VACUUM CANISTER(IF YOUR CAR HAS DIR SUSPENSION)





VACUUM CANISTER

COMPLETED !!