



iPE Exhaust

Automotive exhaust system engineering

McLaren 720S

Product installation instructions






Table of Contents

1. Important Messages -----	3
2. Tools required for the operation process -----	4
3. McLaren 720S product assembly appearance -----	5
4. Steps for disassembling the original exhaust and related key points -----	6
5. Steps for installing IPE exhaust and related key points ----- -----	10

(1) Important message

1. Please read the installation manual before installing the iPE exhaust pipe.
2. Please install by the technician of the car exhaust system or familiar with the iPE exhaust system.
3. This manual provides detailed installation instructions to ensure proper installation and use of iPE exhaust pipe; in case of improper use and disassembly, the company does not assume any responsibility for loss and personal injury.
4. When installing the iPE exhaust pipe, please lock according to the torque value of the manual to avoid abnormal damage to the screws and nuts.
5. If the exhaust pipe of the car is still at a high temperature, please wear insulated gloves for the exhaust pipe installation work, or install it after cooling down.
6. Before starting, be sure to wipe off the oil on the exhaust pipe to avoid burning and high temperature.
7. The iPE exhaust pipe is designed according to the original engine data. If the computer is upgraded to change the engine parameters, the exhaust pipe may generate resonance, resonance or other abnormal sound. IPE can provide a modified version of the exhaust pipe for such vehicles.
8. If you have any questions about this installation instruction or the use of the iPE exhaust pipe, please contact your local iPE partner or contact us at info@ipe-fl.com

(2) Tools required for the operation process

Tool name	Tool appearance
Rust inhibitor / lubricant	
Hexagon socket 10、12、13、14mm	
Hexagon wrench 12、13、14mm	
Torque wrench	
Twelve-Points Socket	

(3) Product assembly appearance



(4) Steps for disassembling the original exhaust and related key points

Move the vehicle to the top machine and raise it to the proper position.

Note: Please stop the vehicle and really lift the vehicle. When jacking up, clear the surrounding area and pay attention to the height to ensure the safety of people and vehicles!

After the screws are removed, place them neatly to avoid confusion during recovery. Use a lubricant and disassemble if necessary.

1. Remove the trim panel above the engine
2. Remove the rear wheels and fenders on the left and right sides. (Fig. 1), (Fig. 2)
3. Remove the left and right rear leaf plates and the lower side cover. (Fig. 3), (Fig. 4)
4. Remove the intake manifolds on the left and right sides.



(Figure 1)



(Figure 2)



(Figure 3)



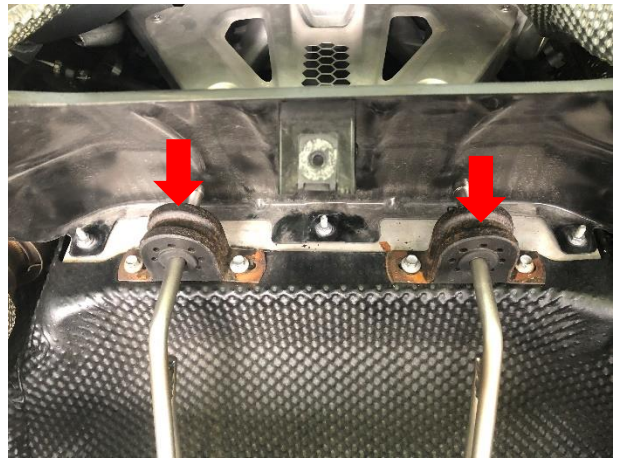
(Figure 4)

5. Remove the guard on the muffler. (Figure 5)
6. Remove the muffler and the catalyst beam loop.
7. Remove the lifting bolts above and below the muffler. (Fig. 6), (Fig. 7), (Fig. 8)
8. Remove the front iron screws from the catalyst section.
9. Remove the rear lug screws from the catalyst section.
10. The original exhaust and dismantling are completed.

Note: After the screws are removed, place them neatly to avoid confusion during recovery.



(Figure 5)



(Figure 6)



(Figure 7)

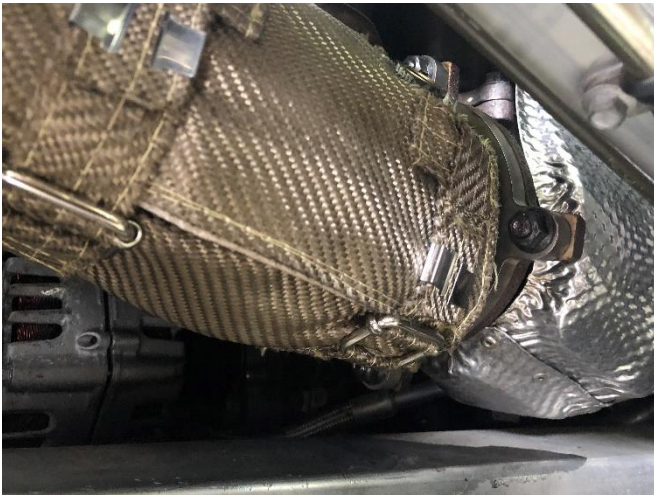


(Figure 8)

(5) Steps for installing IPE exhaust and related key points

1. Install the catalyst section to the positioning, pre-lock the front iron head screw and rear lifting ear screw, and lock the oxygen sensor, and then lock the barrel body after positioning. (Figure 7)

Note: Lock the screws to the proper torque



(Figure 9)



(Figure 10)



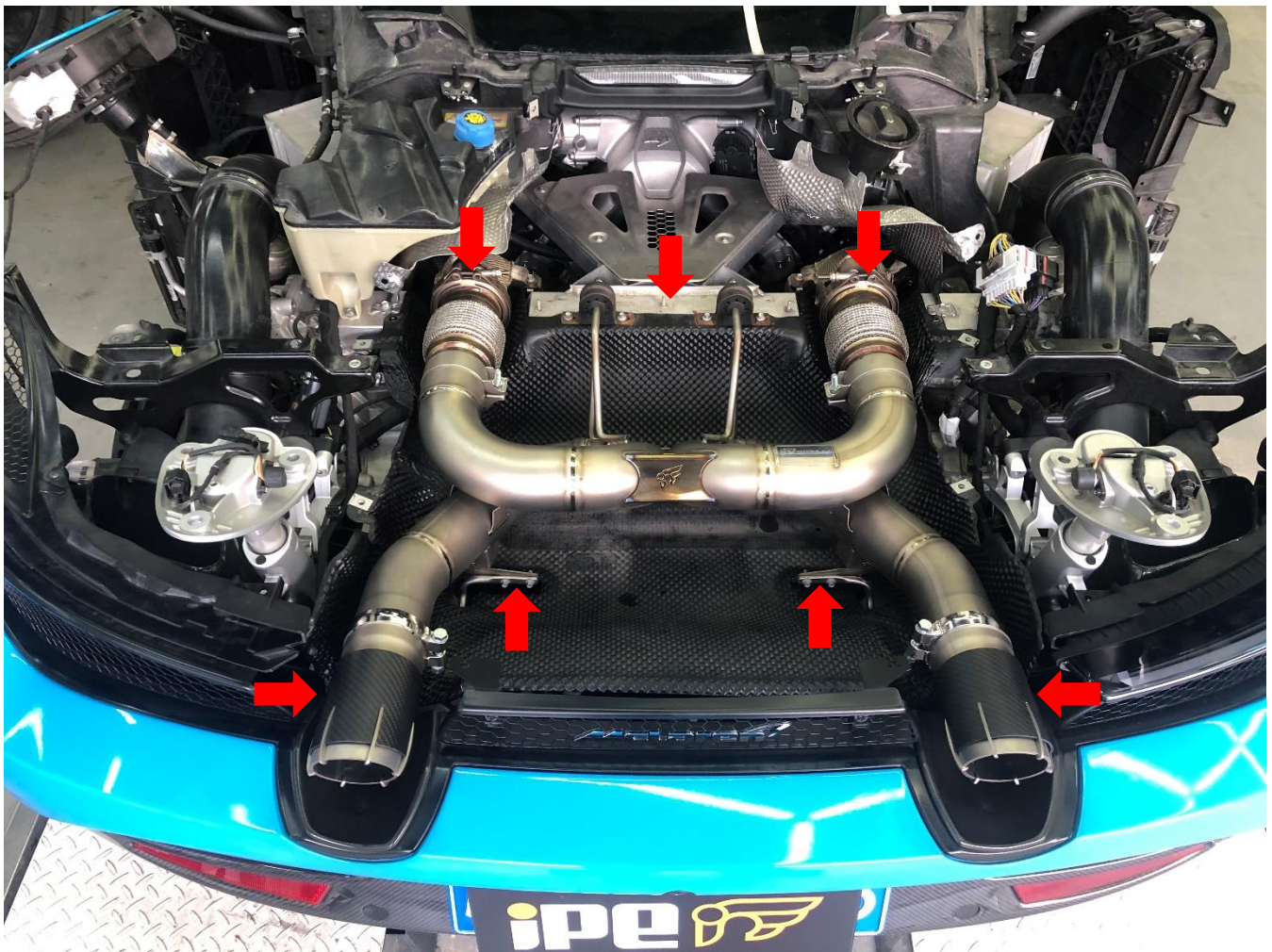
(Figure 11)



(Figure 12)

2. After installing the muffler to the position, lock the upper lifting ear, lower lifting ear and bundle ring in sequence.
3. Tightening the catalyst section screws.
4. Adjust the tips to position.
5. Restore the upper guard plate, the fender plate, the intake manifold, and the wheel frame in sequence.

Note: Lock the screws to the proper torque



(Figure 13)