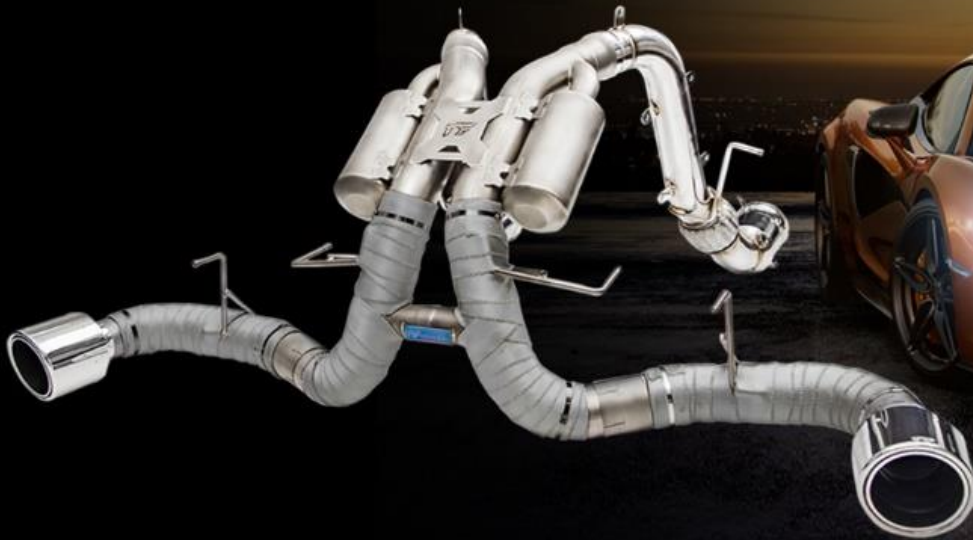


Instruction Manual McLaren 540C & 570S

McLaren 540 / 570 **IPE EXHAUST**



- iPE would like to congratulate you on your purchase of the exhaust system of McLaren 540C & 570S.

- Valvetronic Sound technology, superior build qualities, and use of material make our exhaust system an industry leader. We would like you to enjoy your exhaust system with this installation manual.

- Please read this installation manual carefully before proceeding with installation of the iPE exhaust system. Installing an exhaust system does require some tools and experience. Since some parts of the system are related with electrical connections, certain level of skills is required in order for the complete system to work properly. If you have any doubts about the installation procedure, we recommend that you talk with your dealer for further assistance. Improper installation can void your warranty. By reading this installation guide and installing the exhaust system, you have agreed to the terms and conditions stated in this manual.

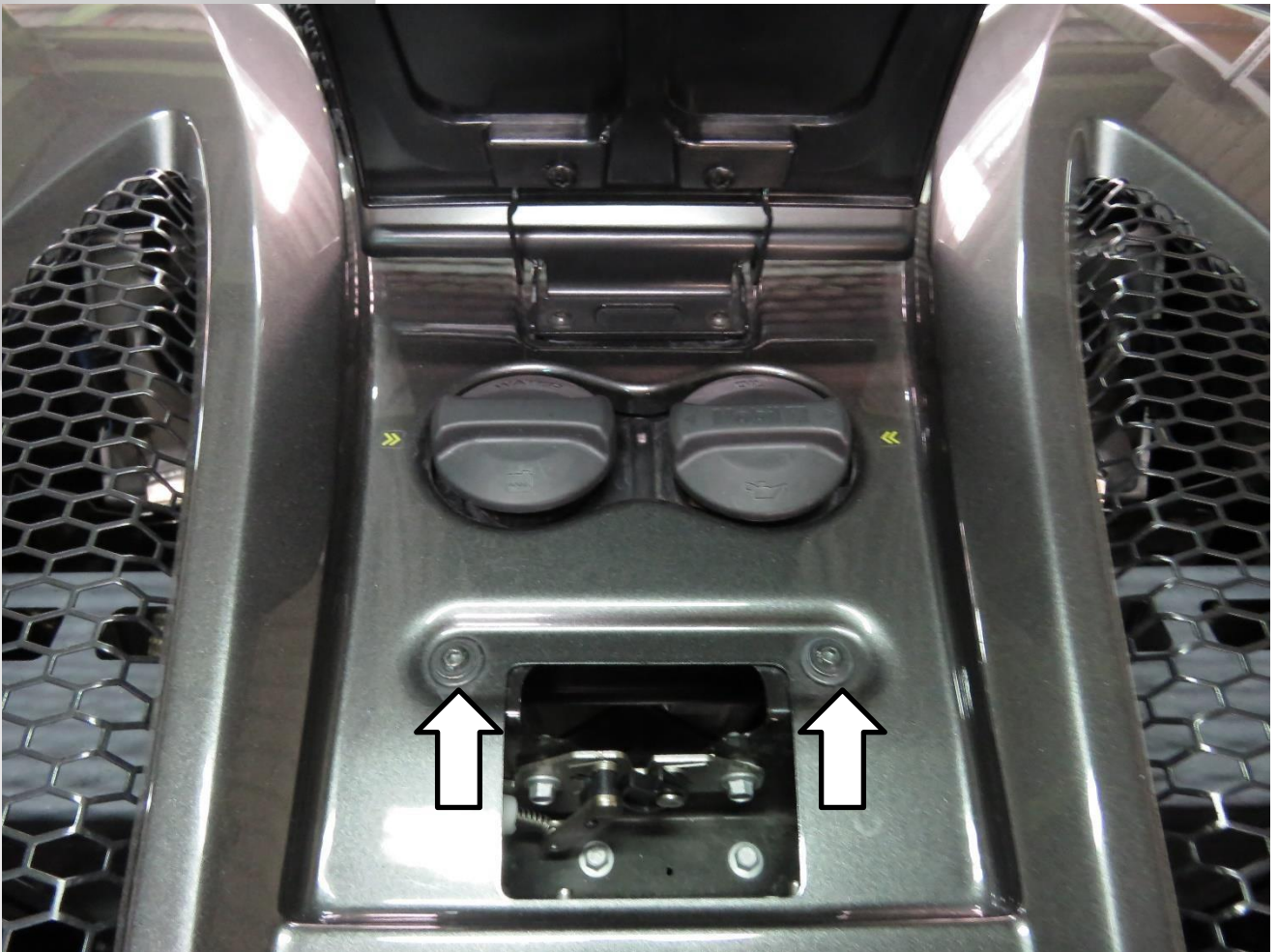
Any questions or comments, please do not hesitate to contact us.

- Please make sure the car is lifted properly. Fail to do so may caused the risk to suffer vehicle damage and personal injury including death. Make sure that the car is lifted on the proper lifting point.
- Exhaust system creates very high temperature; therefore, before doing any work on the exhaust, please allow time for the vehicle to cool down or wear protective items such as gloves to prevent injury before starting the installation process.
- Be careful not to strip or break nuts and bolts when loosening them and while installing, please torque the bolts to the correct specifications to prevent mechanical issues from occurring.
- With our Valvetronic system, iPE recommend 60% throttle opening for valve actuation to prevent excess resonance with exhaust sound.
- It is normal for white smoke to be visible on the first start. The smoke will dissipate after the exhaust reaches working temperature.
- For personal safety, please do not stand directly in front of the exhaust on first start because the muffler is not yet active and some manufacturing debris might exit the exhaust and cause injury.
- Our exhaust system requires a break in period and the sound and tone might change after the break in period. Normally this will take place at around 300 miles or about 500 km.

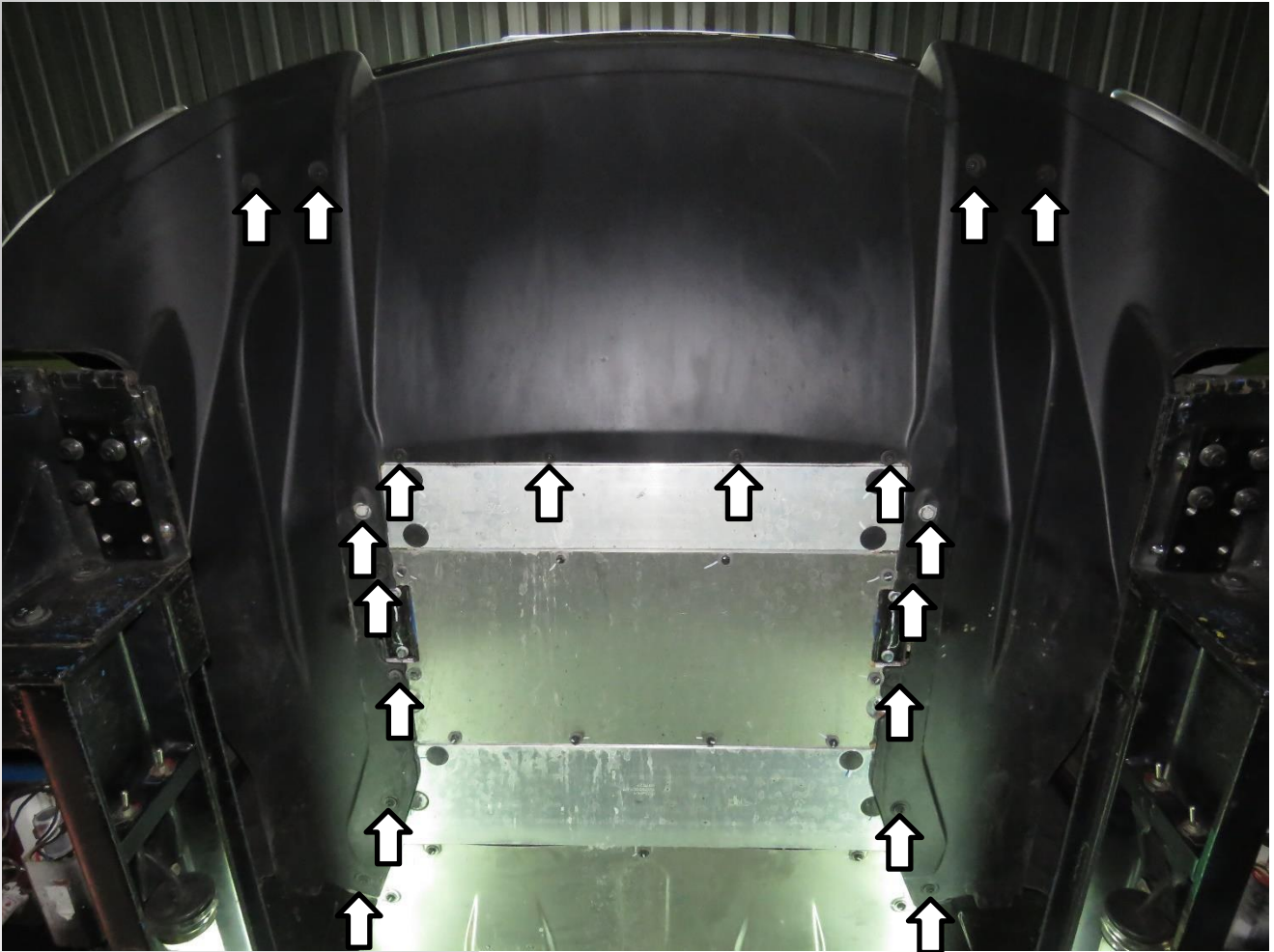
Get ready to enjoy the performance and sound of exhaust system!



1. Remove the cover panel
2. Unscrewed the bolts
3. Remove engine cover

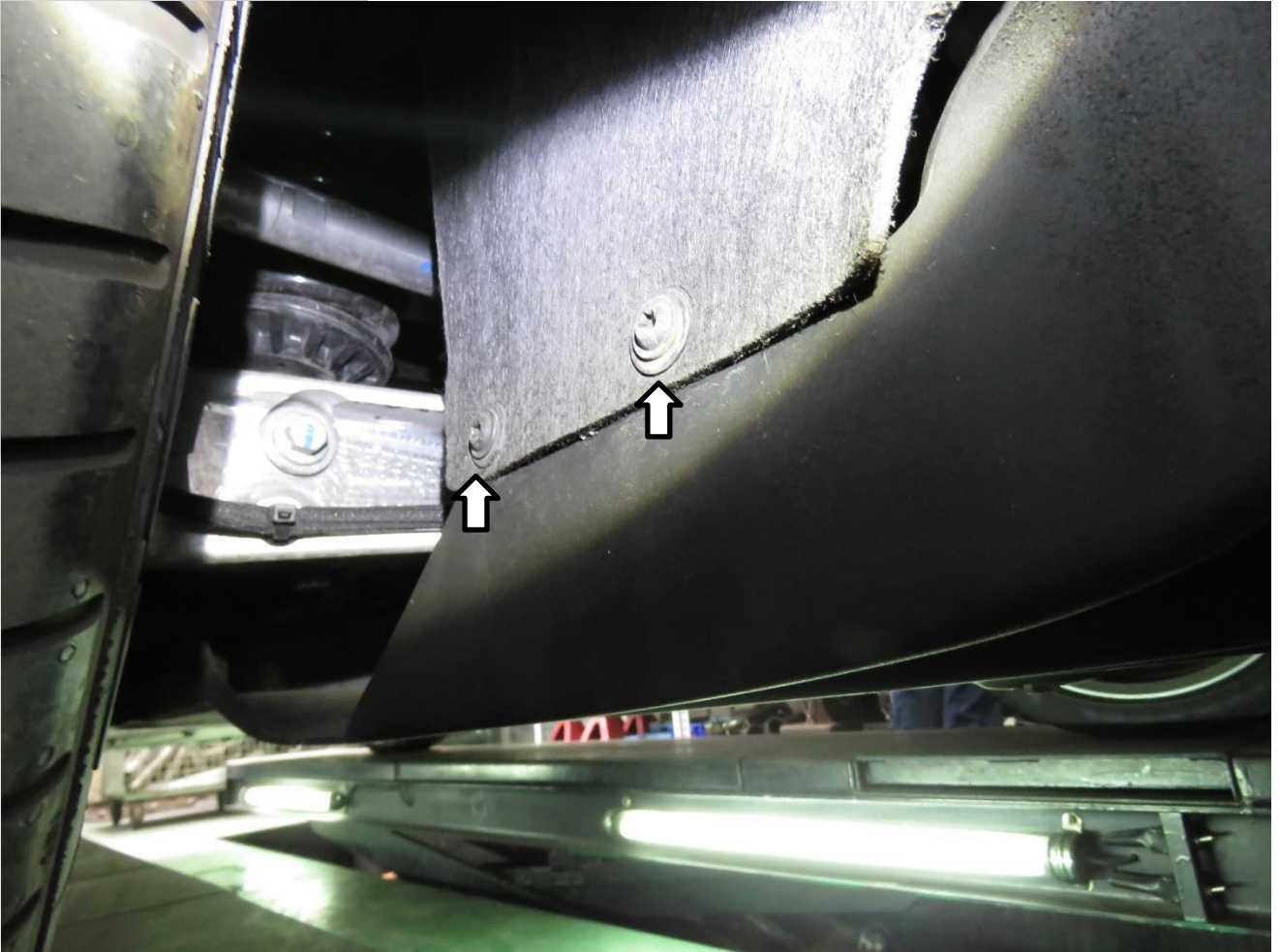


4. Remove the diffuser by unscrewing all the marked bolts
(Support the diffuser while doing so)







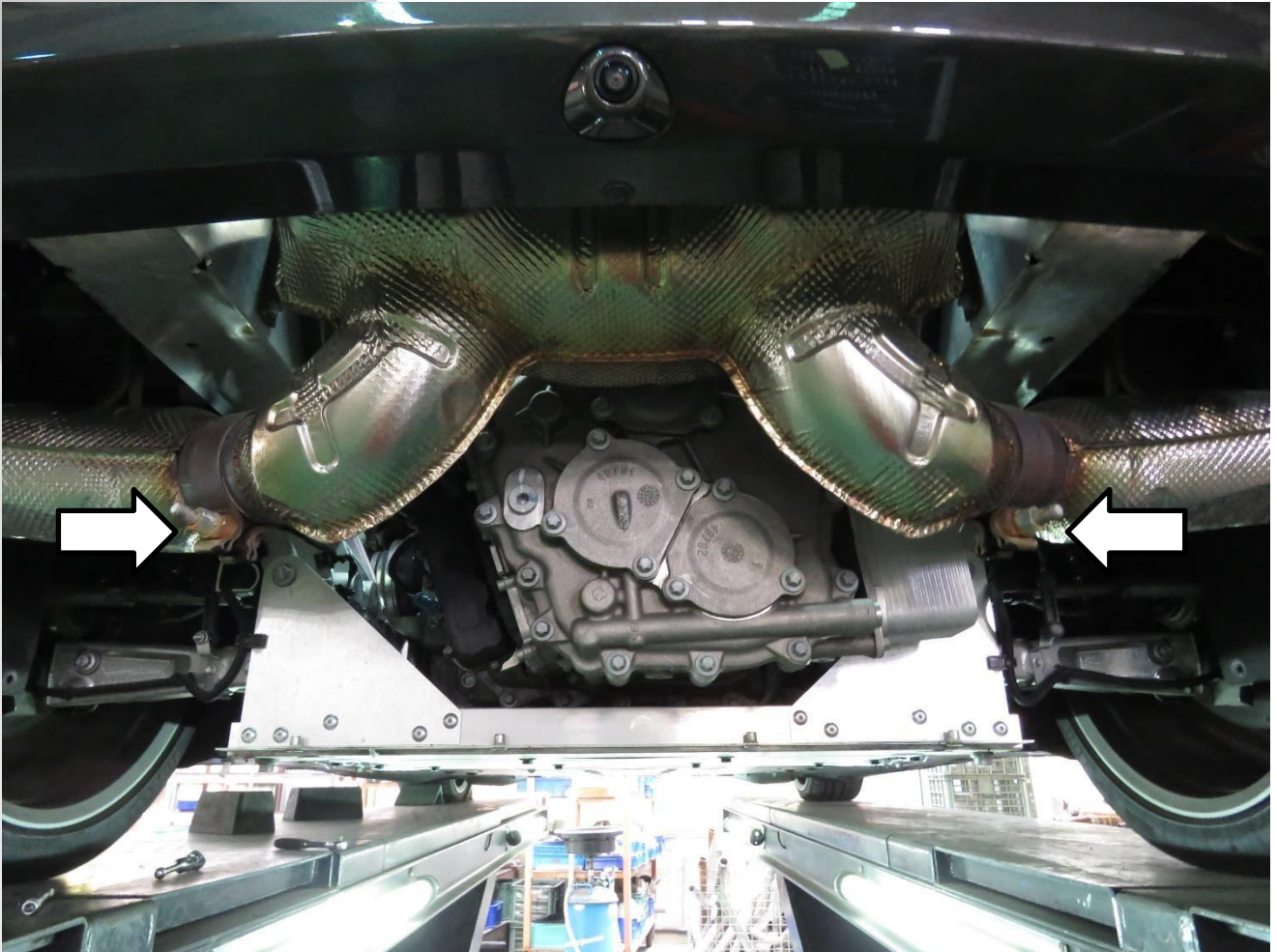


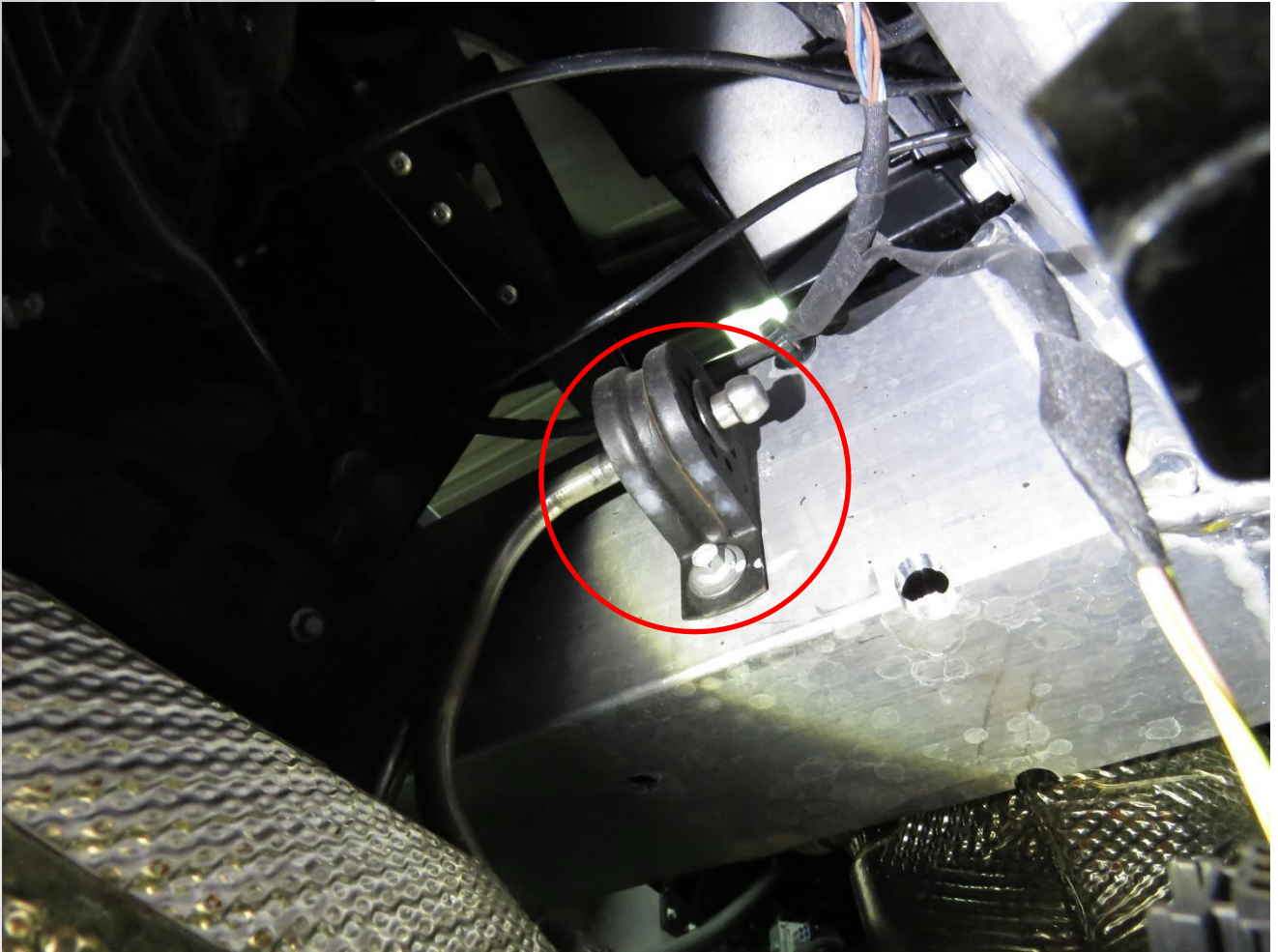




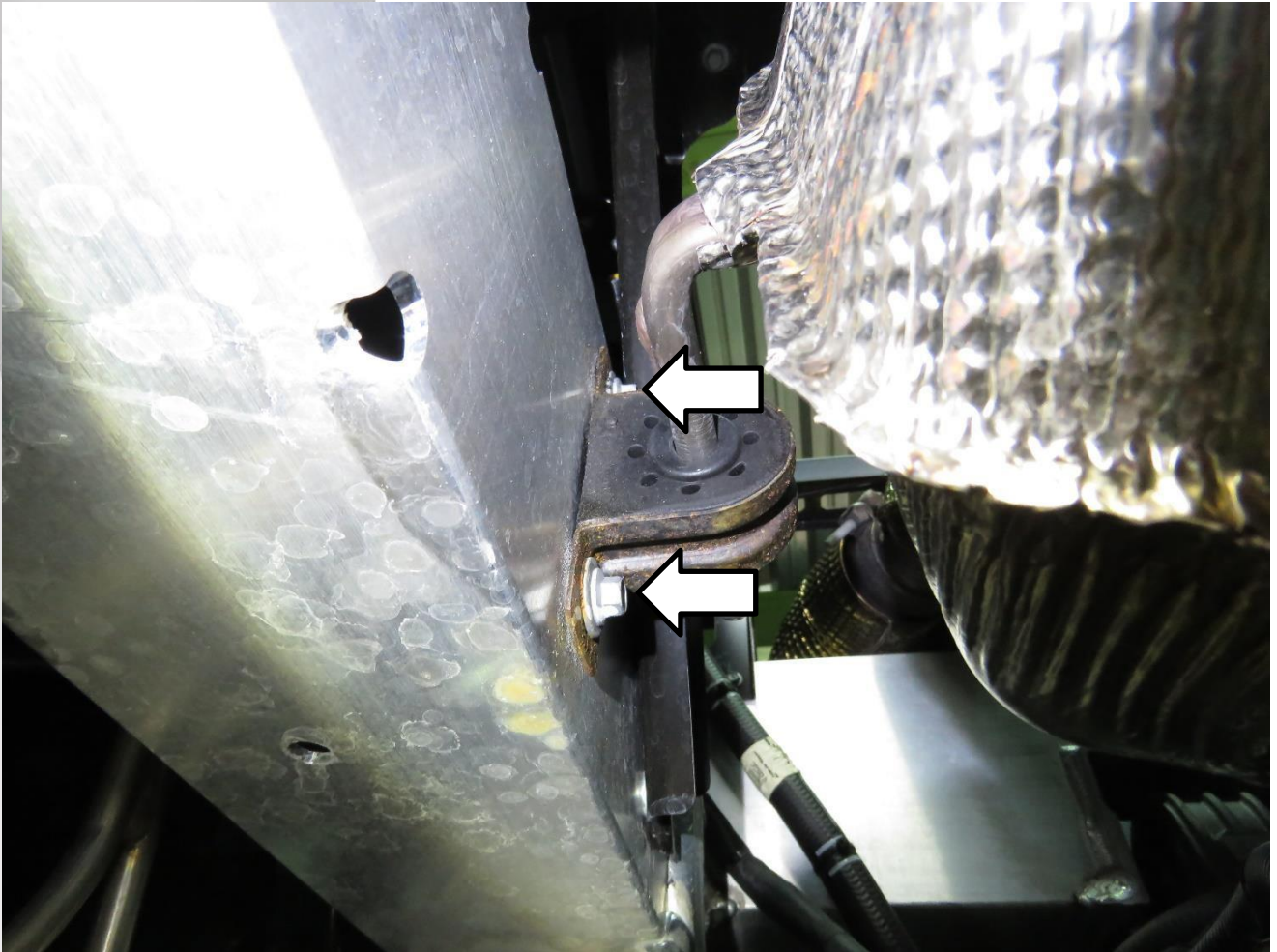
5. Loosen both clamps then unscrewed the exhaust hanger to remove both tail pipes.

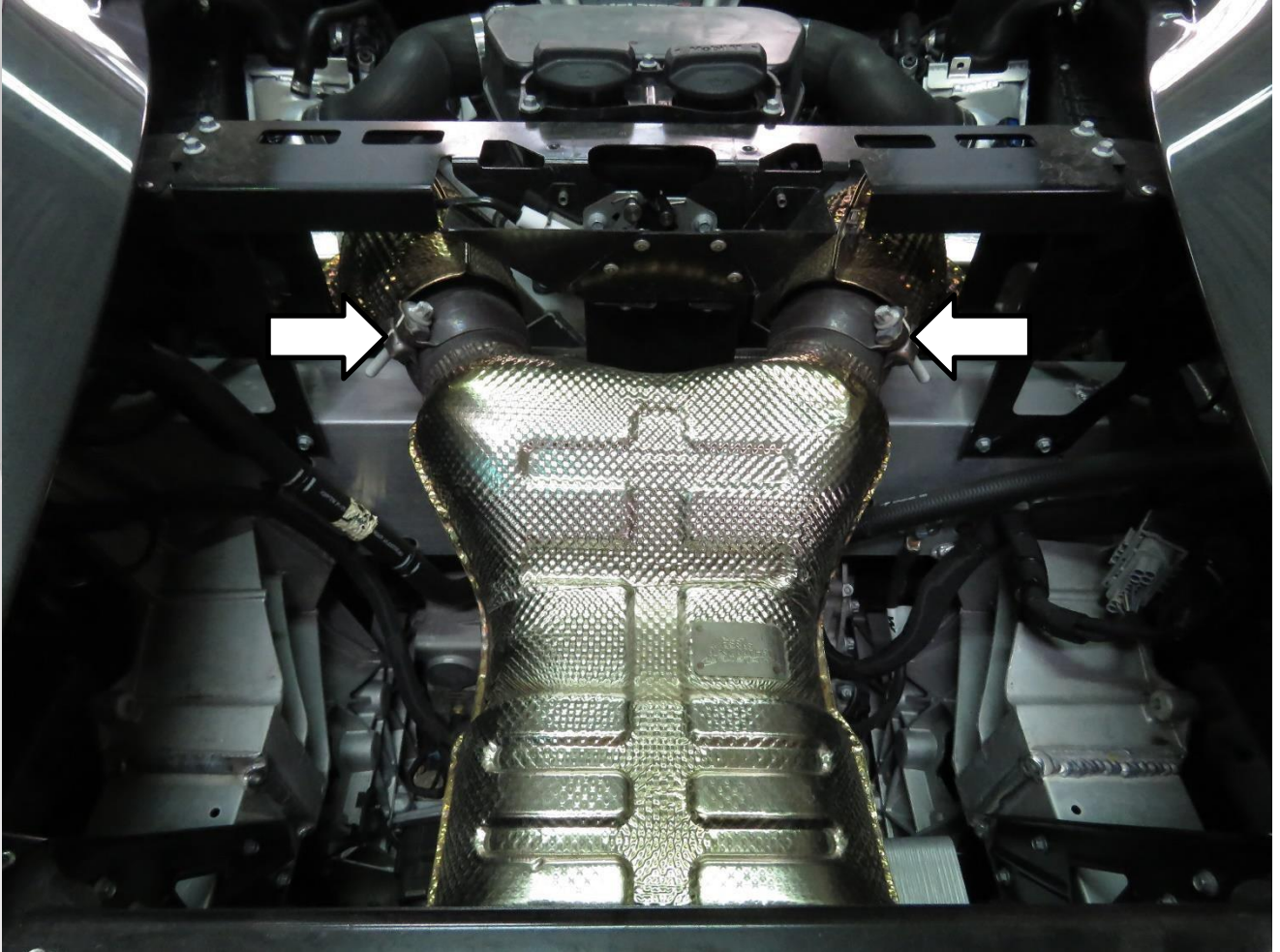
Caution: DO NOT use any sort of lubrication when the exhaust is still warm





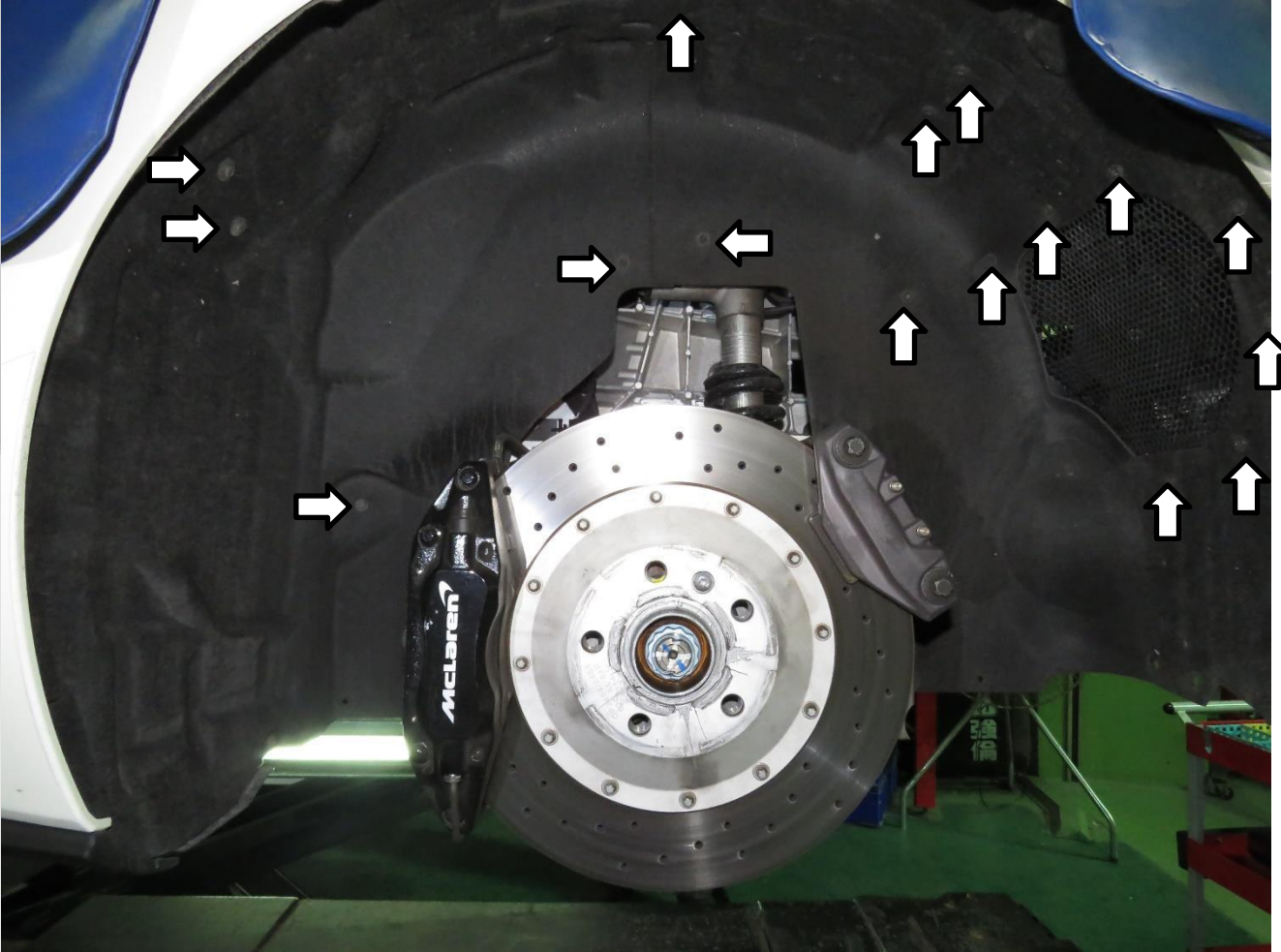
6. Unscrewed both exhaust hangers to remove both tail pipes.



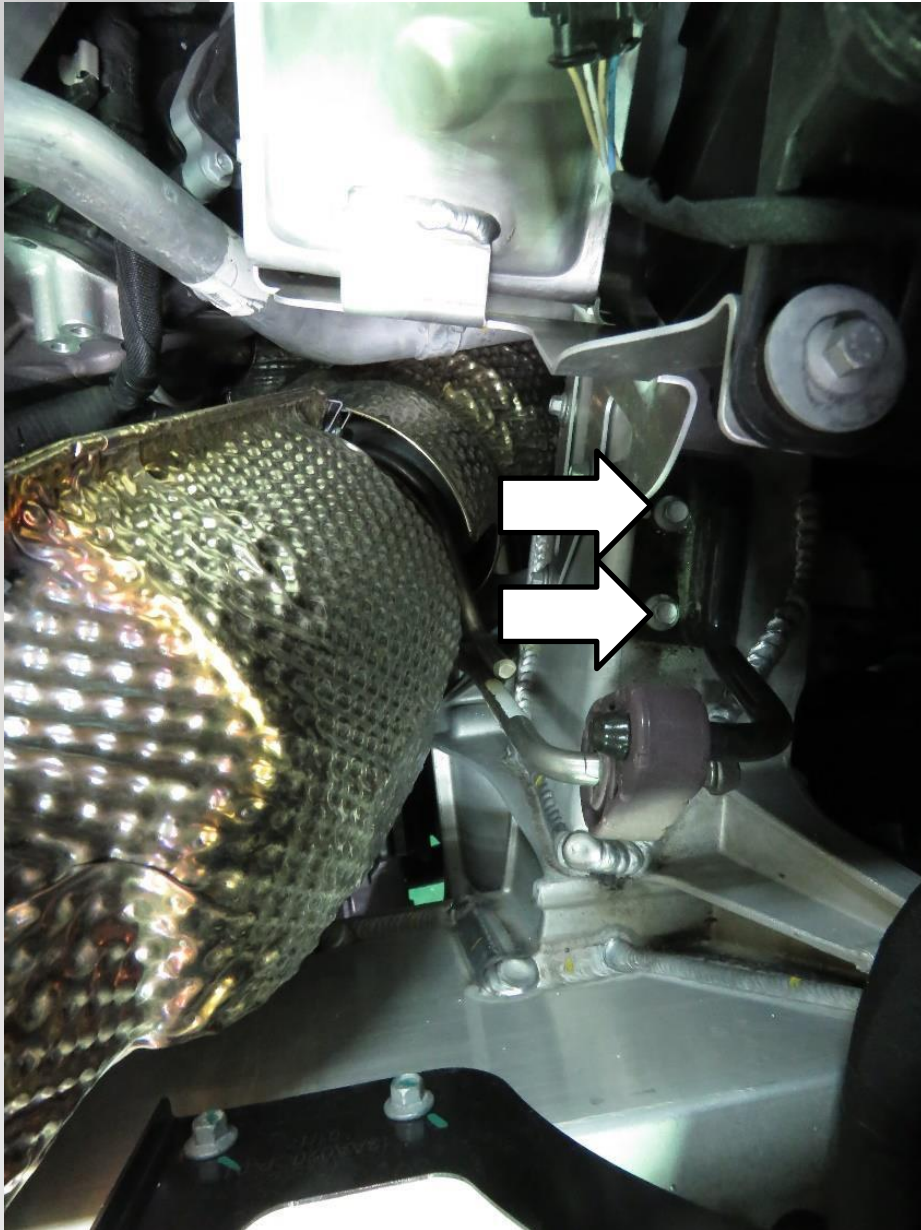


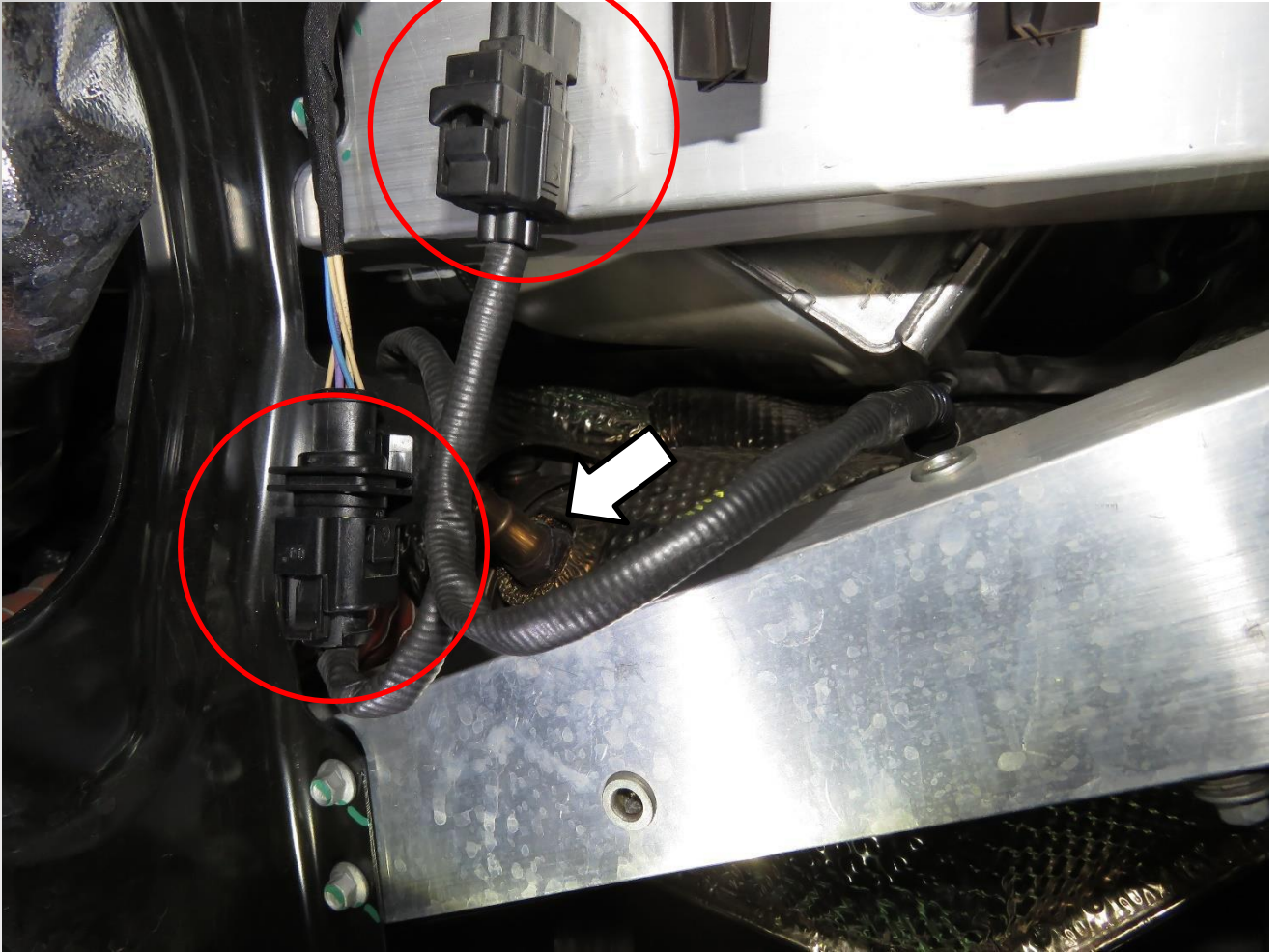
7. Remove both rear wheels and inner fenders.



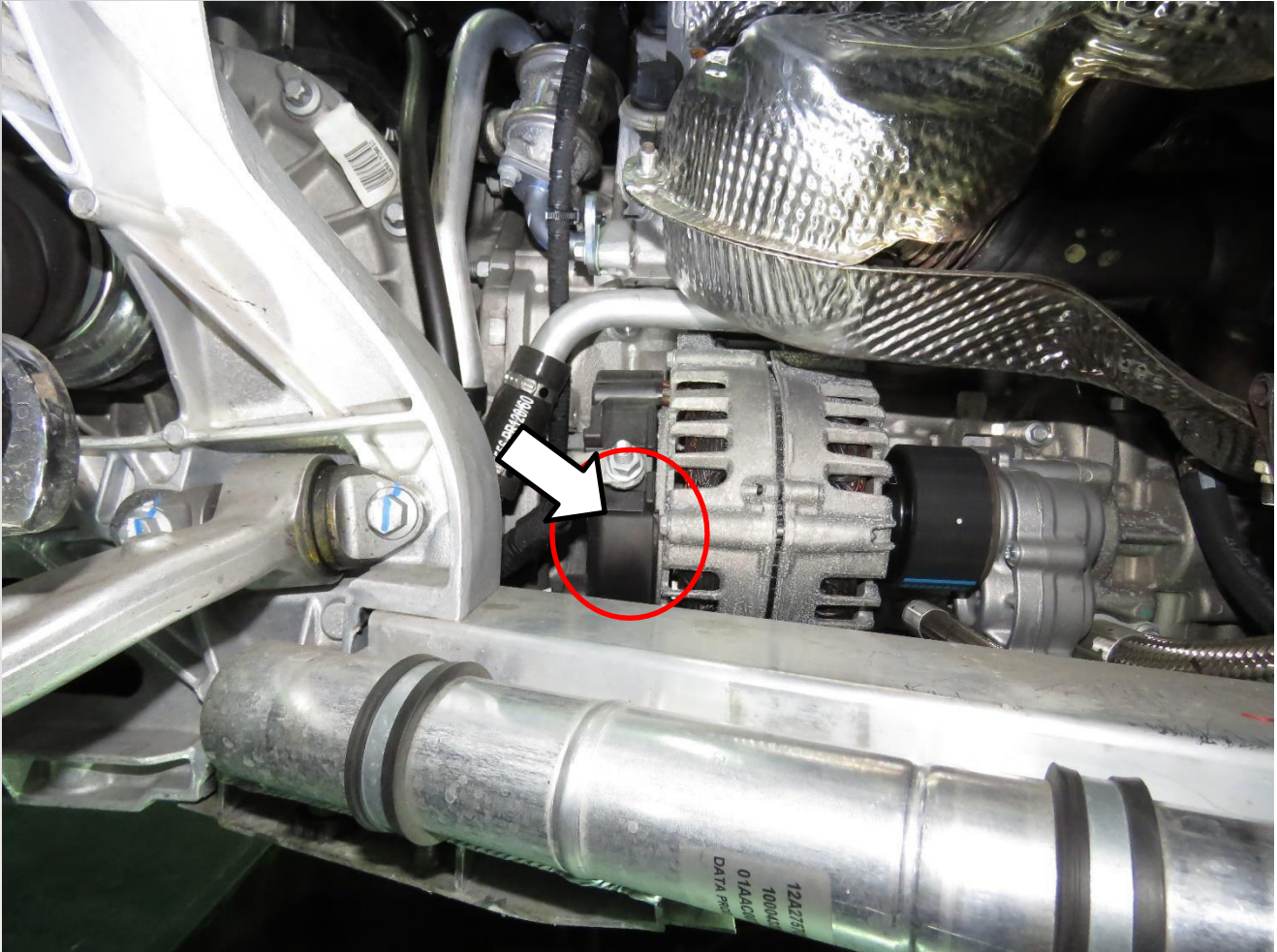


8. Remove both rubber hangers from the downpipes, then disconnect the O2 sensors.





9. Use insulation material to prevent contact from the alternator.



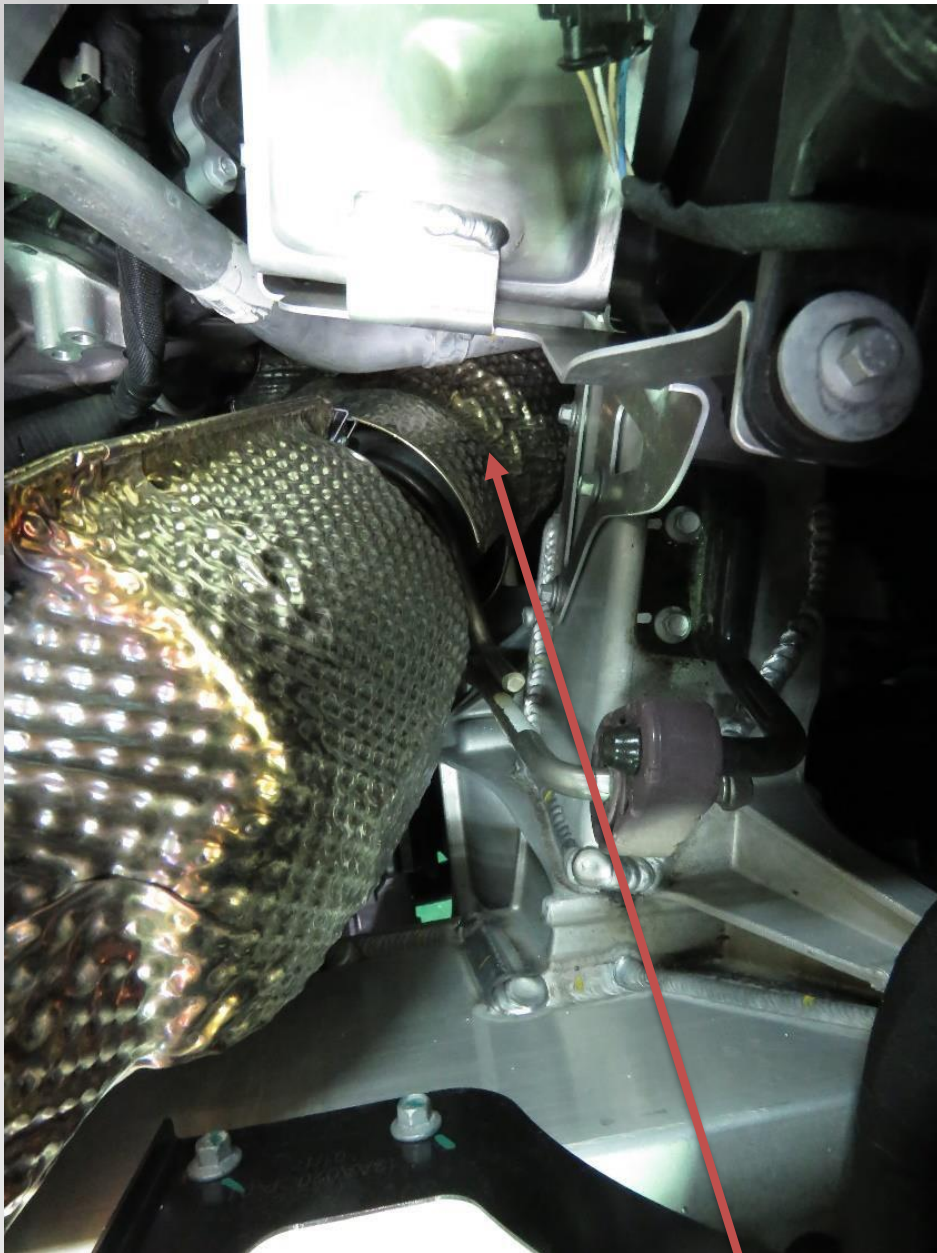
10. Unscrewed clamps from downpipes and heatshields so the downpipes can be removed.





11. Install all the dismantled parts in reverse order from which it was removed.

MAKE SURE TO CHECK VEHICLE MANUAL FOR TORQUE SPEC



Install the downpipe before putting this heatshield back in.

12. Leave a gap between 10 - 15mm from the panel.

