



iPE Exhaust

Automotive exhaust system engineering

Porsche992

Carrera / Carrera4 / Carrera S / Carrera 4S

Product installation instruction

WWW.IPE-f1.com

Important information

iPE developed exhaust systems based on the OEM exhaust to avoid issue with installation. Modern car keys and the vehicle itself have an inductive power transmission function, we suggest to keep the car key at least 5 meters away from the vehicle for safety purpose. Please wear insulated gloves to replace the exhaust pipe when hot, or replace it after cool down to avoid burns.

The iPE exhaust system is an evolution designed based on OEM spec. If the vehicle has ECU tuning, there may be possible resonance from the exhaust system.

If you have any questions about this installation instruction, please contact your local iPE dealer or email us at info@ipe-f1.com

Porsche 992

Carrera / Carrera 4 / Carrera S / Carrera 4S

Product assembly appearance

Headers



Cat pipe

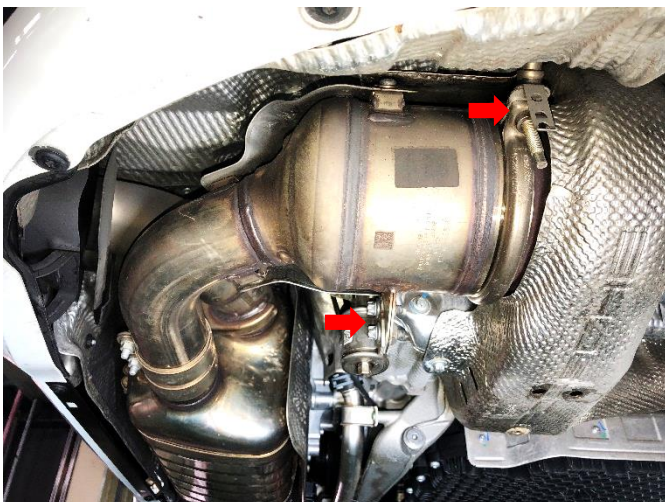


Muffler

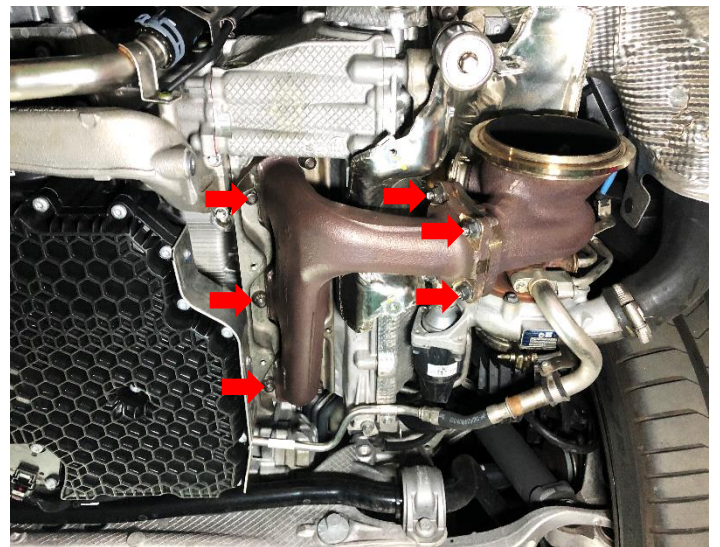
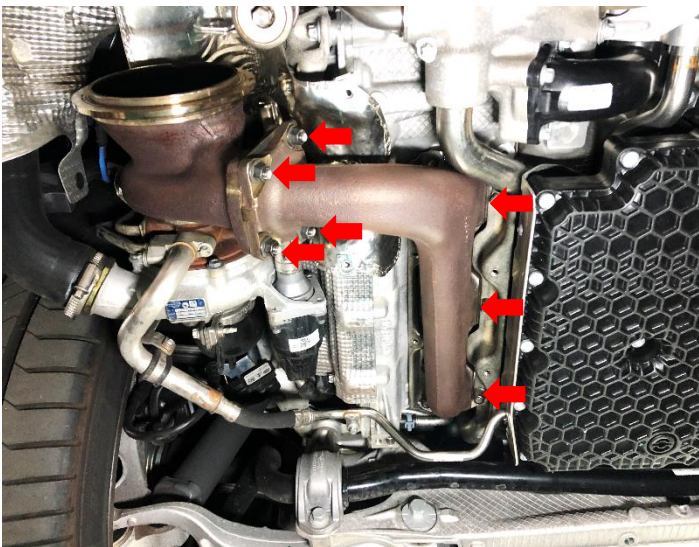
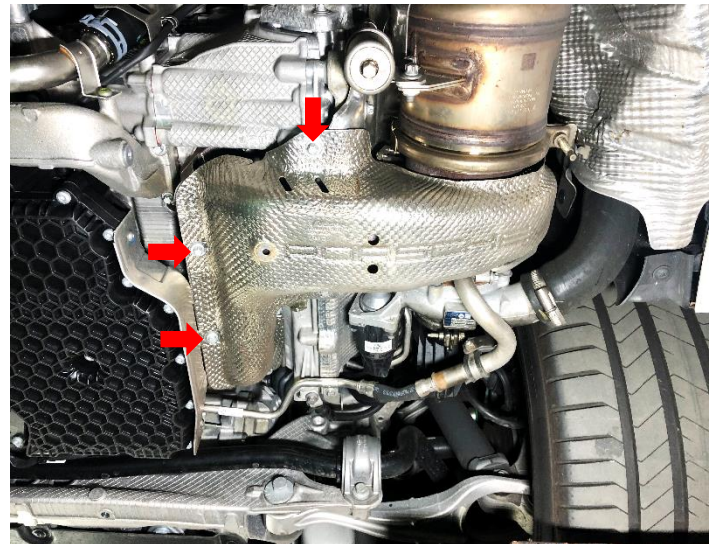
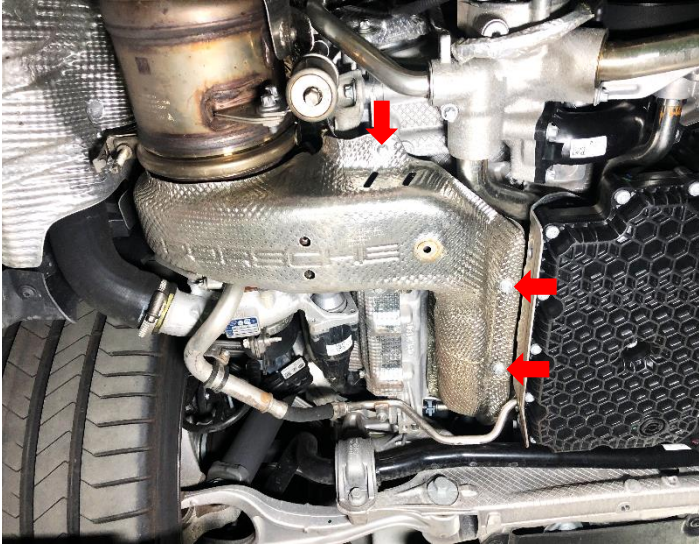


(1) Remove the original exhaust pipe

1. Remove the original muffler clamps, loosen the sliding bush screws, and unplug the electronic motor plug.
2. Remove the screws of the original cat pipe clamps, the screws of the bush seat, and the oxygen sensor.
3. Then remove the original muffler and cat pipe.

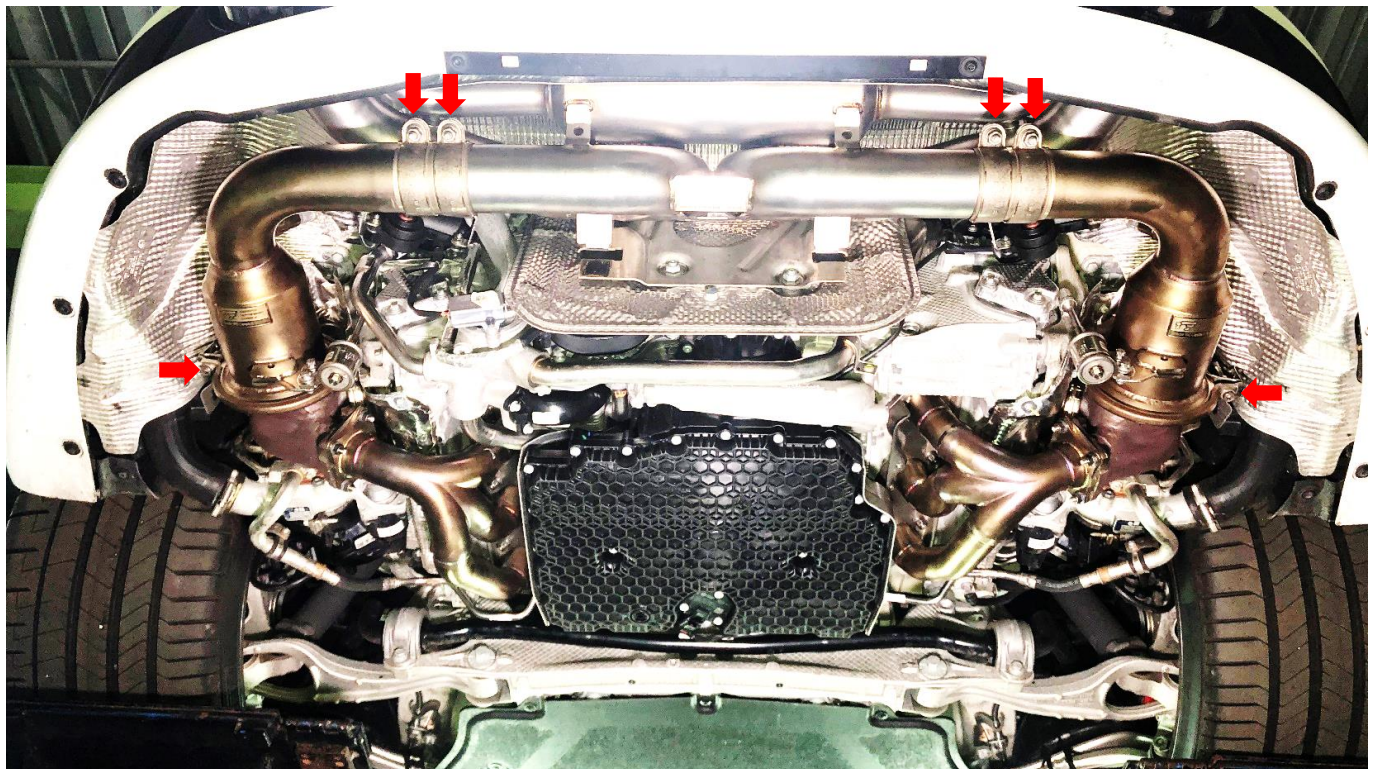
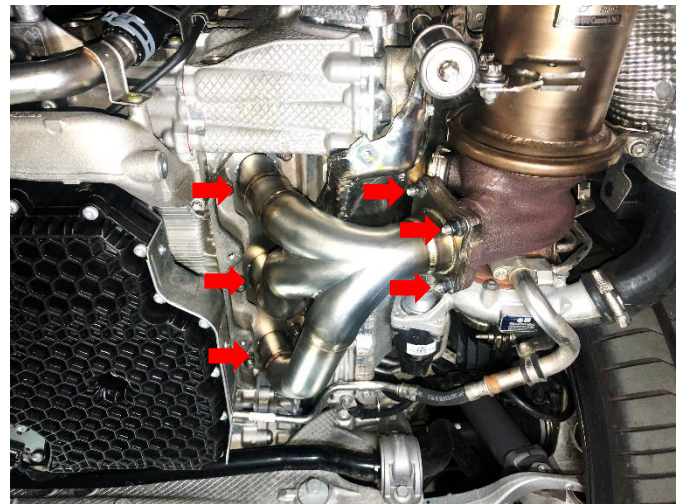
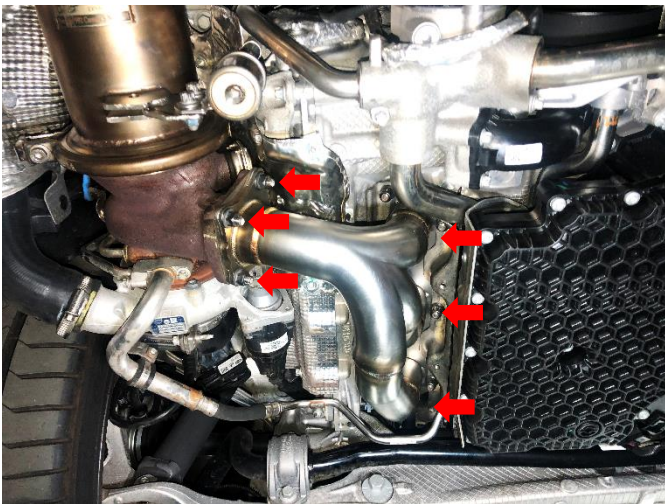


4. Remove the original headers and turbo header shield.
5. Then remove the original headers.



(2) Install the iPE exhaust system

1. Install the iPE headers to the car without recovering the turbo header shield.
2. Install the iPE cat pipe to the car and then lock the retainer clamps.

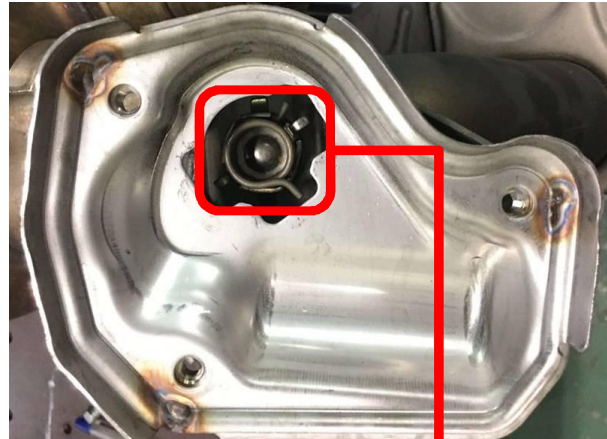


3. Remove the original electronic valve motor and spring (one each on the left and right), and install them to the electronic valve seat of the iPE muffler as shown in the figure.

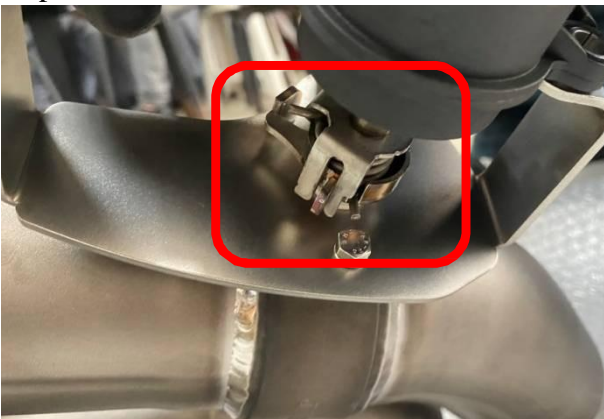
(a) Remove the original electronic valve motor.



(b) Remove the original electronic valve spring.



(c) The electronic valve motor is installed on the iPE valve seat and inserted into the OPEN position



(d) Install the valve spring to the iPE valve spring seat.



(e) iPE electronic valve motor installation completed (open position).



4. Install the iPE muffler to the car.
5. Adjust the outlet of the muffler to the center tips.
6. Tighten the sliding bush, muffler clamps and the screws of the cat pipe bush seats.
7. Lock the oxygen sensor and the valve motor plug back.
8. Check the valve starts normally without any problems, and then complete the installation of the iPE exhaust system.

