



iPE Exhaust System

Installation Manual

Porsche 997 Turbo

Announcement:

iPE developed this exhaust according to the improvement of stock . Therefore, there will be no effect of the car from the original manufacturer after installation. There is an inductive power supply function between the car key and the car for many vehicle models. Therefore, the car key should be kept away from the car with a distance of at least five meters to maintain safe conditions.

The exhaust of a car right after driven is still in a high temperature. Thus, please wear heat insulating gloves to replace the exhaust, or perform the replacement after the temperature lowered to avoid burns. For avoiding the generation of resonance, please don't let the valve open too early when setting the valve to open automatically. The opening of the valve is recommended to be set to 60% of gas pedaling. Please refer to page 21 for the explanation of detail setting.

iPE exhaust is designed according to the stock engine data. In case the engine computer upgraded for increasing horse power, obvious resonance in conjunction with this exhaust could occur. IPE also provide revised exhausts for such vehicles, please contact us for further details.

Tools



Sockets
6mm



Allen keys
E10 、 E12 、 E14



Wrenches
12mm 、 13mm
15mm 、 22mm



Torque wrench

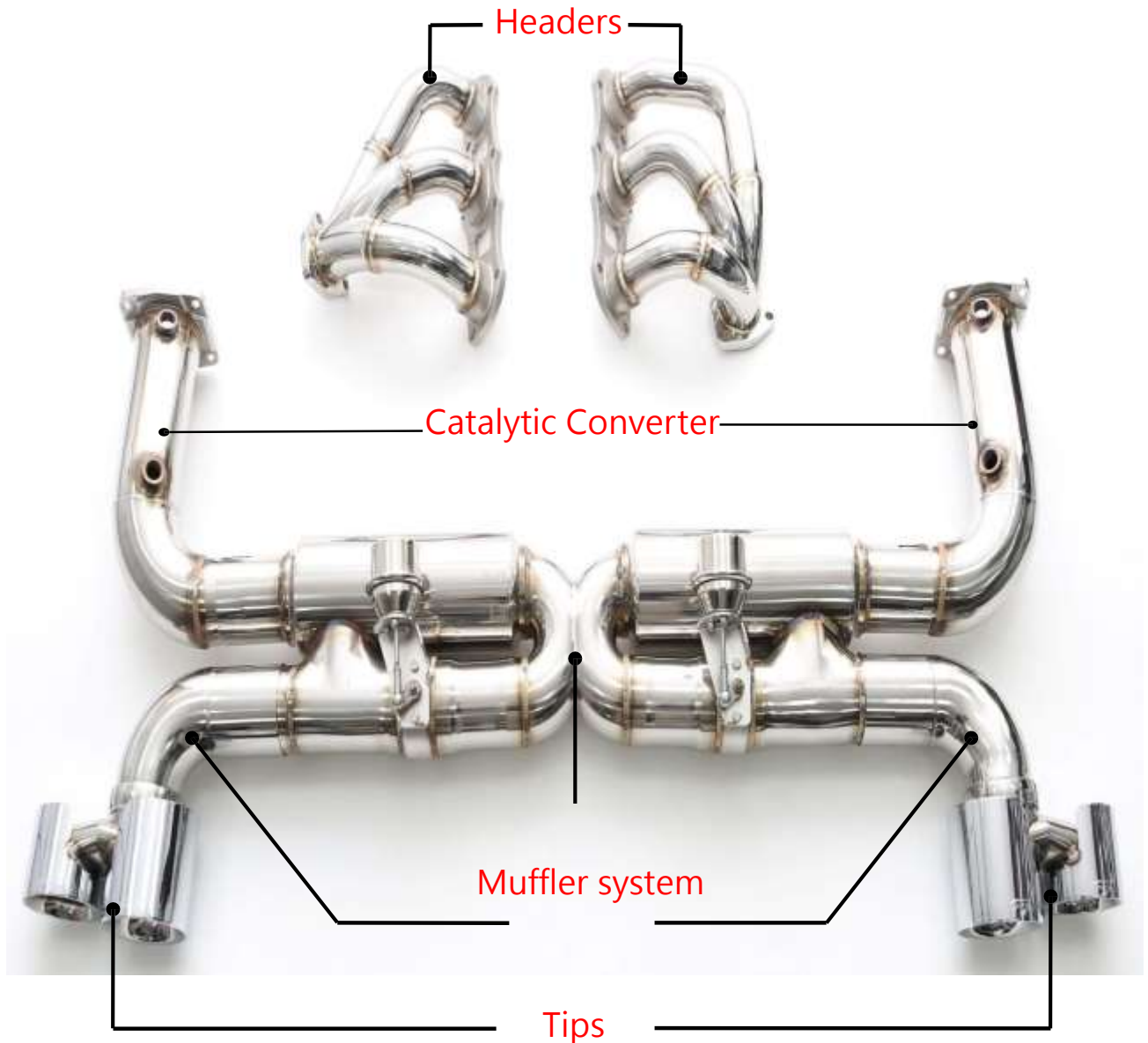
Torque Wrench



Lubricant



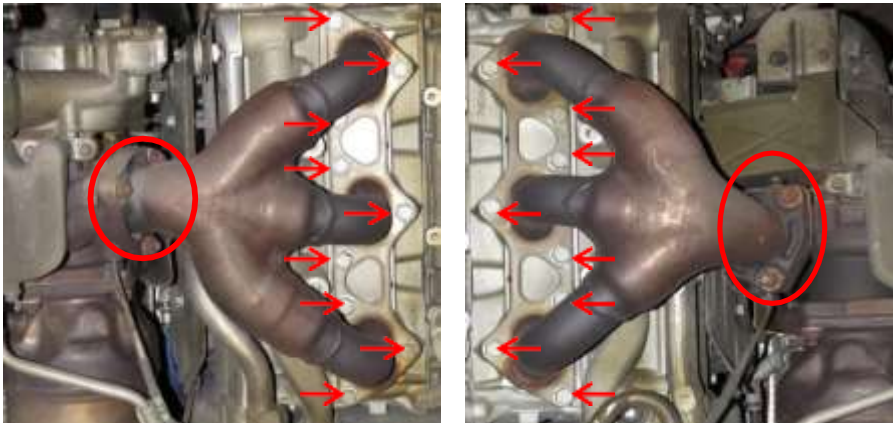
iPE 997 Turbo product



Disassemble guide

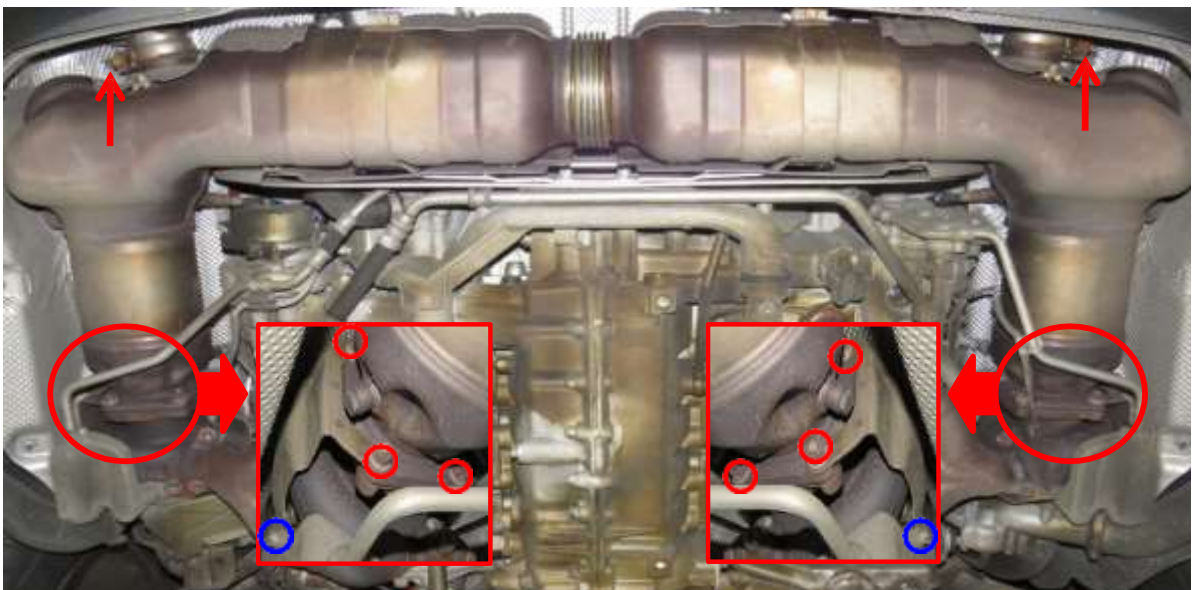
A, Headers

Use 13mm wrench to disassemble the headers

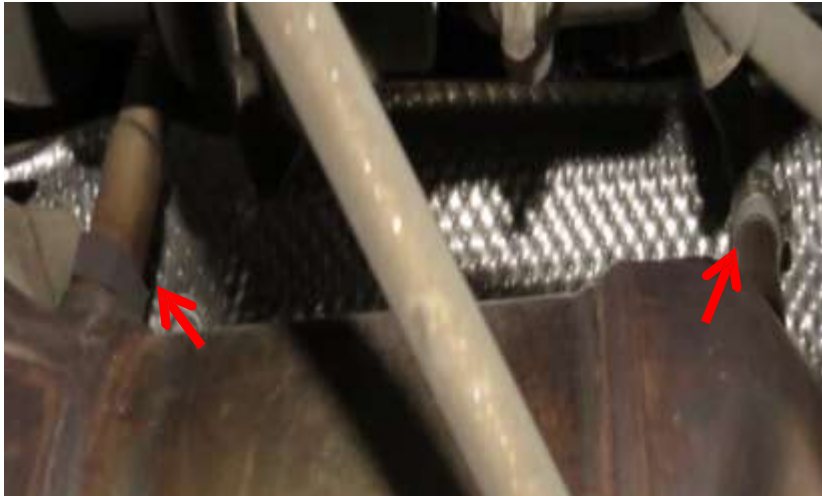


B, Catalytic Converter and Muffler System

- Use 13mm wrench to disassemble the tips and catalytic converter.
- Use E10 Allen key to disassemble the heat shield



Use 22mm wrench to unscrew two O2 sensors



Use 6mm Allen Key to unscrew the muffler brackets



Disassembling the Stock exhaust system done

Installation Guide

A, headers

Install the headers by using 13mm wrench



圖2-1

B, Catalytic Converter and muffler system

- Install the Catalytic Converter and muffler system by using 13mm wrench
- Using 22mm wrench to install two O2 sensors



Using 13mm wrench to tie down the muffler brackets

make sure the bracket is tie down correctly with the adapters



Using a 13mm wrench to tie down the tips and clamps between muffler and the catalytic converter

Adjust the muffler till the exit in the center



Tips

Use 13mm wrench to tie down the tips and make sure there is a 5mm gaps between two tips



Finished the installation of iPE Exhaust