



Installation Instruction

Ferrari Purosangue V12

Before Installation

Welcome to iPE Exhaust.

Thank you for choosing iPE Exhaust. Please carefully read and follow the installation instructions below before proceeding with the installation. Improper installation may result in a voided warranty.

By reading this installation guide and installing the exhaust system, you have agreed to the terms and conditions stated in this manual. Please contact support@ipeofficial.com for any further questions.

Installation Instructions for iPE Exhaust System*

- Please make sure the car is lifted properly. Failure to do so may cause vehicle damage and personal injury including death. Please make sure the car is lifted onto the proper lifting point.
- Exhaust systems can create extremely high temperatures. Prior to installing your iPE exhaust system, please allow your car engine to cool down or wear proper protective wear in order to prevent injuries during installation process.
- Please be careful, do not strip or break nuts and bolts during removal and installation. Please tighten the bolts to the correct specifications in order to prevent mechanical issues.
- With iPE Valvetronic exhaust systems, we recommend 60% throttle opening for valve actuation , in order to prevent excess resonance with exhaust sound.
- Please note, It is normal for white smoke to be visible on the first start. The smoke will dissipate after the exhaust reaches working temperature.
- For personal safety, please do not stand directly in front of the exhaust on first start. As it is a new exhaust system, the muffler is not yet active. There may be some manufacturing debris that will exit the exhaust system, which may cause injury.
- Please note, iPE exhaust system requires a break-in period, the exhaust sound and tone may change after driving approximately 300 miles (500 Km) after installation.

Product Overview



Stock System Removal

Move the vehicle onto the lift and raise it to a suitable height.

Caution:

- Ensure the vehicle is securely parked and correctly lifted.
- When raising the vehicle, ensure sufficient clearance around the work area for safety.
- Keep screws neatly organized during removal to prevent confusion during reassembly.
- Keep screws neatly organized during removal to prevent confusion during reassembly.
- Use lubricating oil as necessary to facilitate screw removal.

1.Remove the following parts as shown in Figure :

- Rear lower panel (1)
- Rear left lower plastic panel (2)
- Rear right lower plastic panel (3)

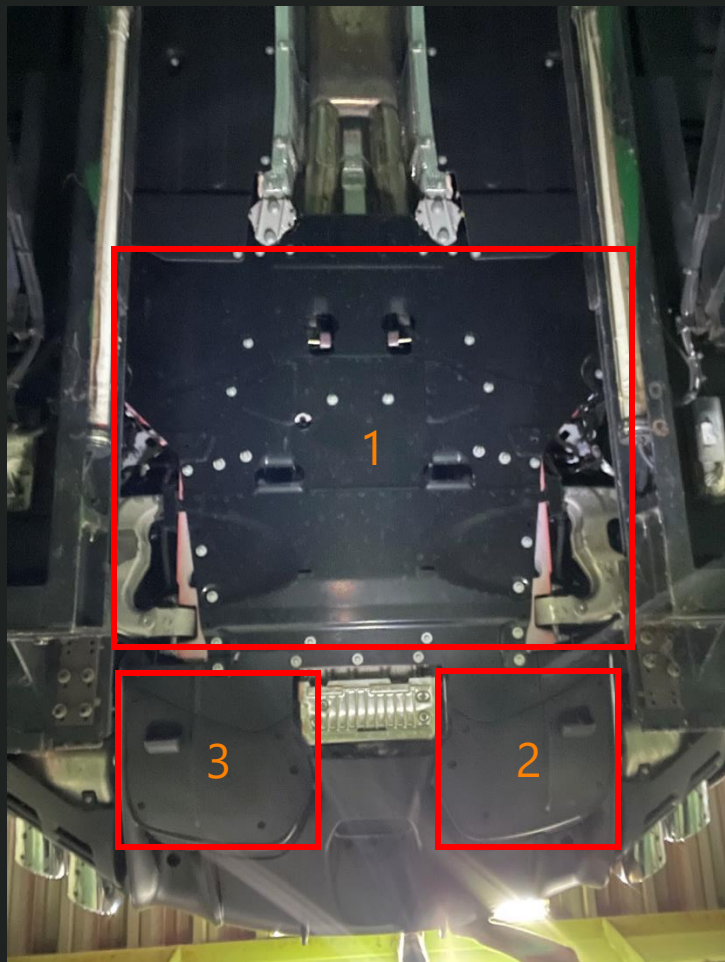


Figure 1

Stock System Removal

Remove the Front Lower Panel (Figure 2)

Caution:

- After removing the screws, organize them properly to avoid confusion during reassembly.

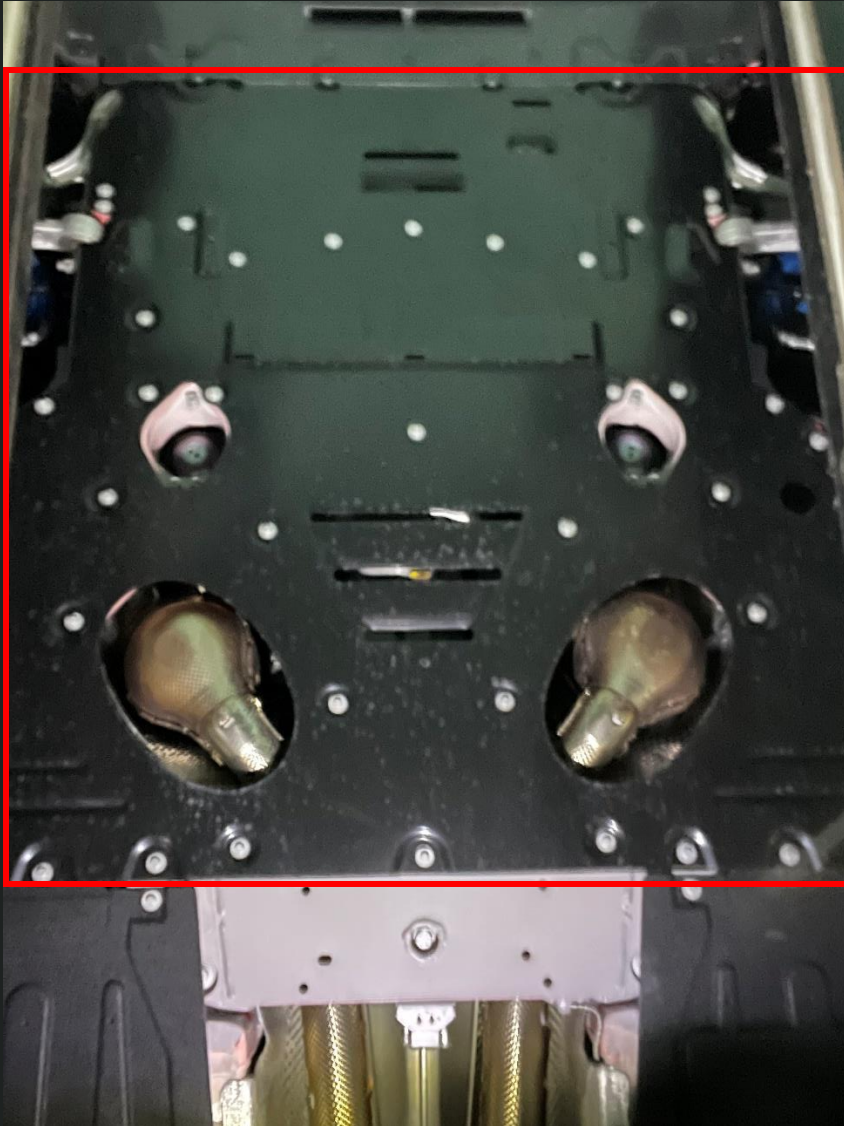


Figure 2

Stock System Removal

Remove the Connecting Rods on Both Sides of the Muffler (Figures 3 and 4)

Caution:

- After removing the screws, organize them properly to avoid confusion during reassembly.



Figure 3



Figure 4

Stock System Removal

Remove the Muffler Hanger Nuts

- There are a total of 12 nuts across both sides (L and R) (Figure 5).

Caution:

- After removing the screws, organize them properly to avoid confusion during reassembly.



Figure 5



Figure 6



Figure 7

Stock System Removal

Remove the Inlet Clamps on Both Sides of the Muffler (Figures 8 and 9, red circles).

Disconnect the Valve Motor Plugs (Figures 10 and 11, red arrows).

Caution:

- After removing the screws, organize them properly to avoid confusion during reassembly.



Figure 8

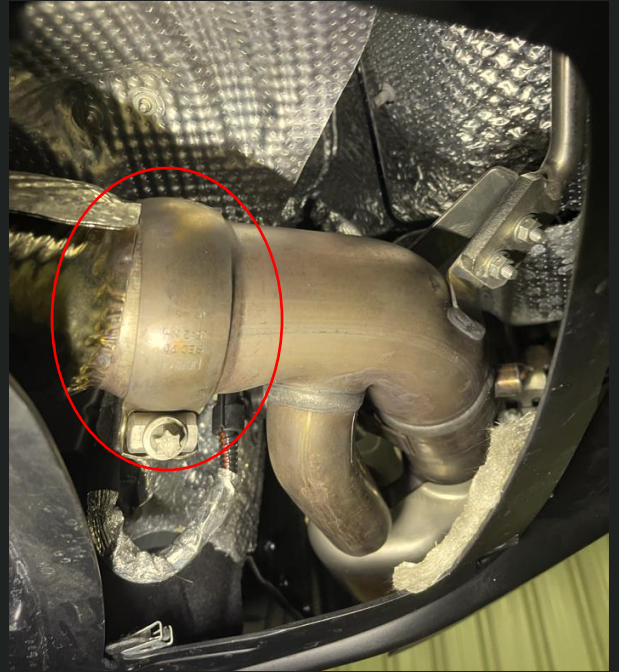


Figure 9

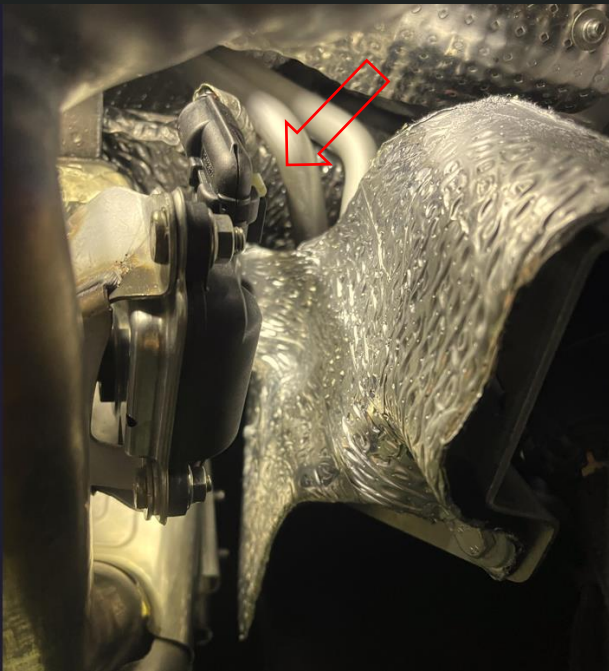


Figure 10

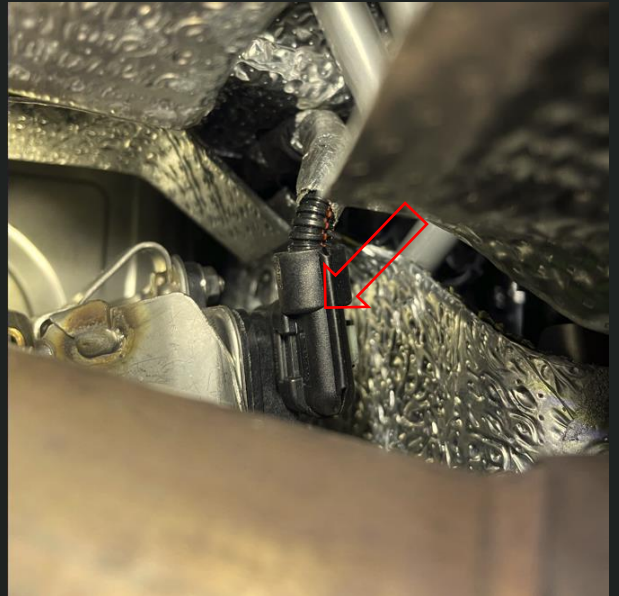


Figure 11

Stock System Removal

Remove the Muffler and Tailpipe.

Remove the Tailpipe Fixing Screws (6 screws) and Nuts (4 nuts), then detach the Tailpipe (Figures 12 and 13).

Remove the Motor, Motor Baseplate, and Spring (Figures 14 and 15).

Caution:

- After removing the screws, organize them properly to avoid confusion during reassembly.

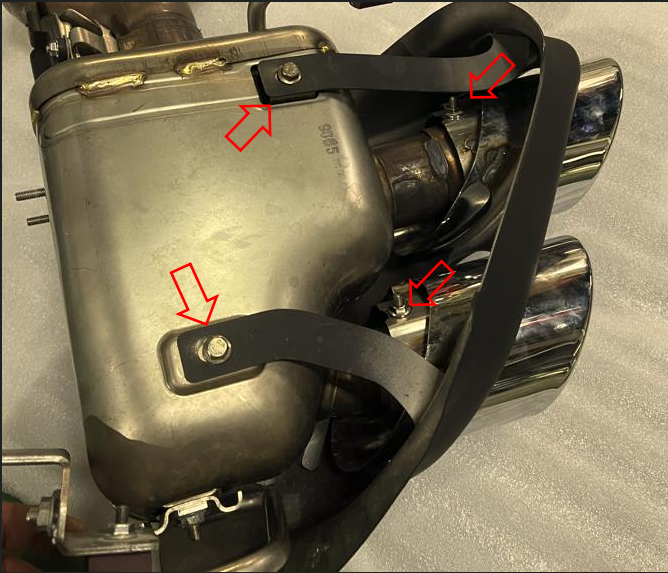


Figure 12



Figure 13

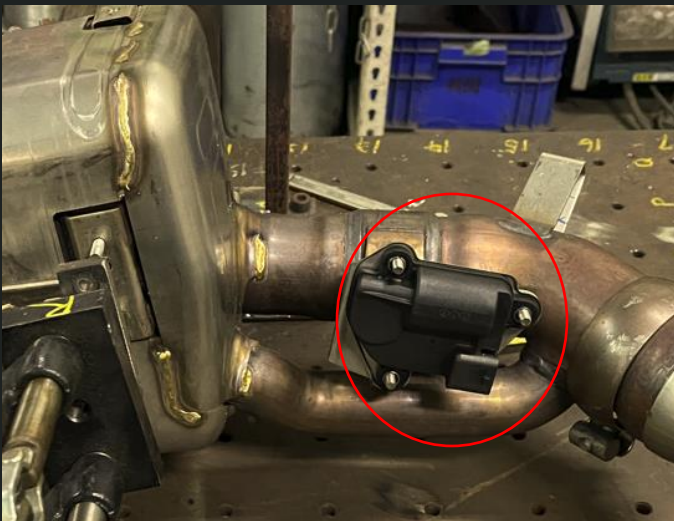


Figure 14



Figure 15

Stock System Removal

Loosen the Rear Section Inlet Clamp Screws (Figure 16, red arrow).

Remove the Rear Section Hanger Bolts (Figure 17) and pull the rear section outwards.

Loosen the Midsection Inlet Clamp Screws (Figure 16, yellow arrow) and pull the midsection outwards for removal.

Caution:

- After removing the screws, organize them properly to avoid confusion during reassembly.

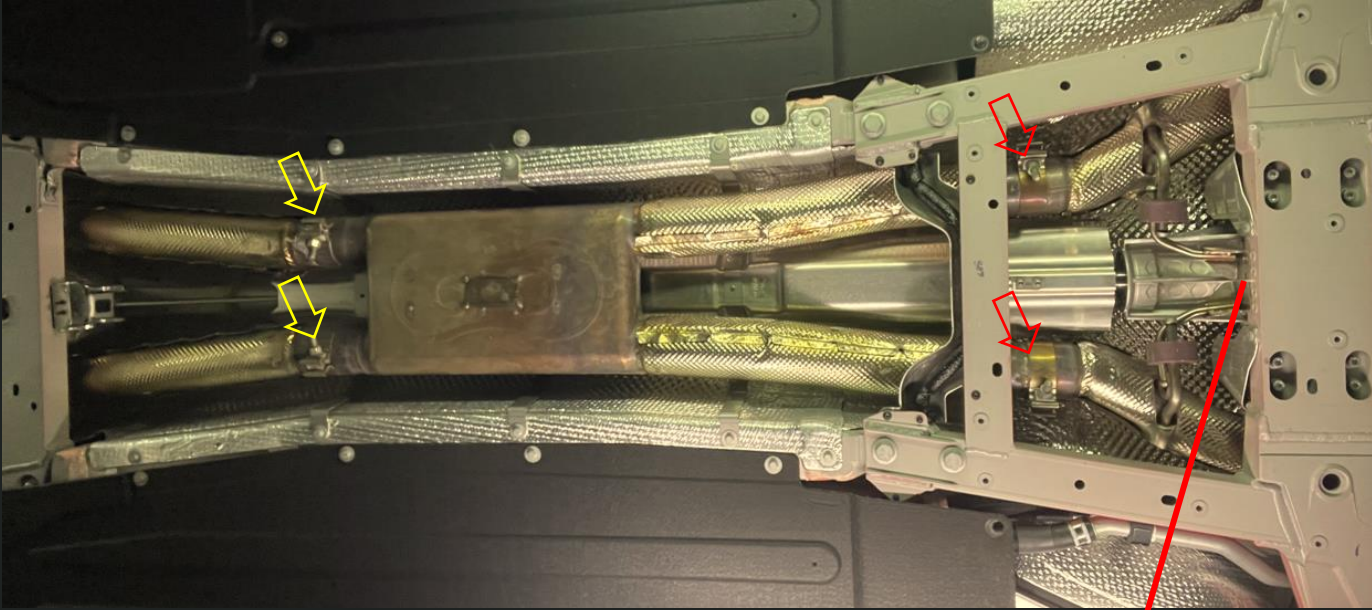


Figure 16

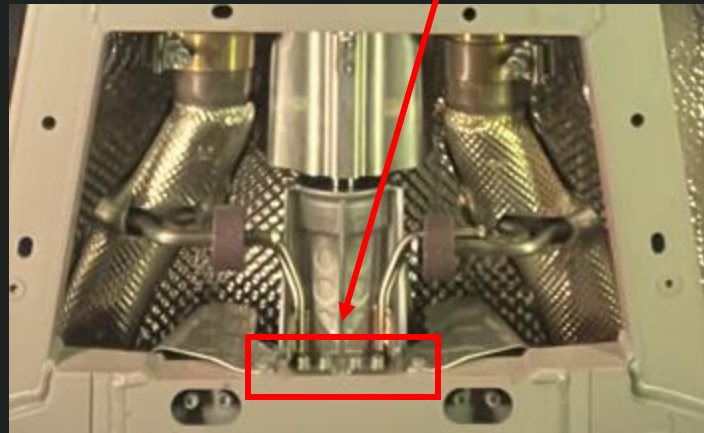


Figure 17

Stock System Removal

Place three top rods to Support the Engine Mounts* 2 and the Transmission (Figure 18, red arrows). Remove the Chassis Frame Screws and Lower the Frame (Figure 18, yellow frame).

Caution:

- After removing the screws, organize them properly to avoid confusion during reassembly.

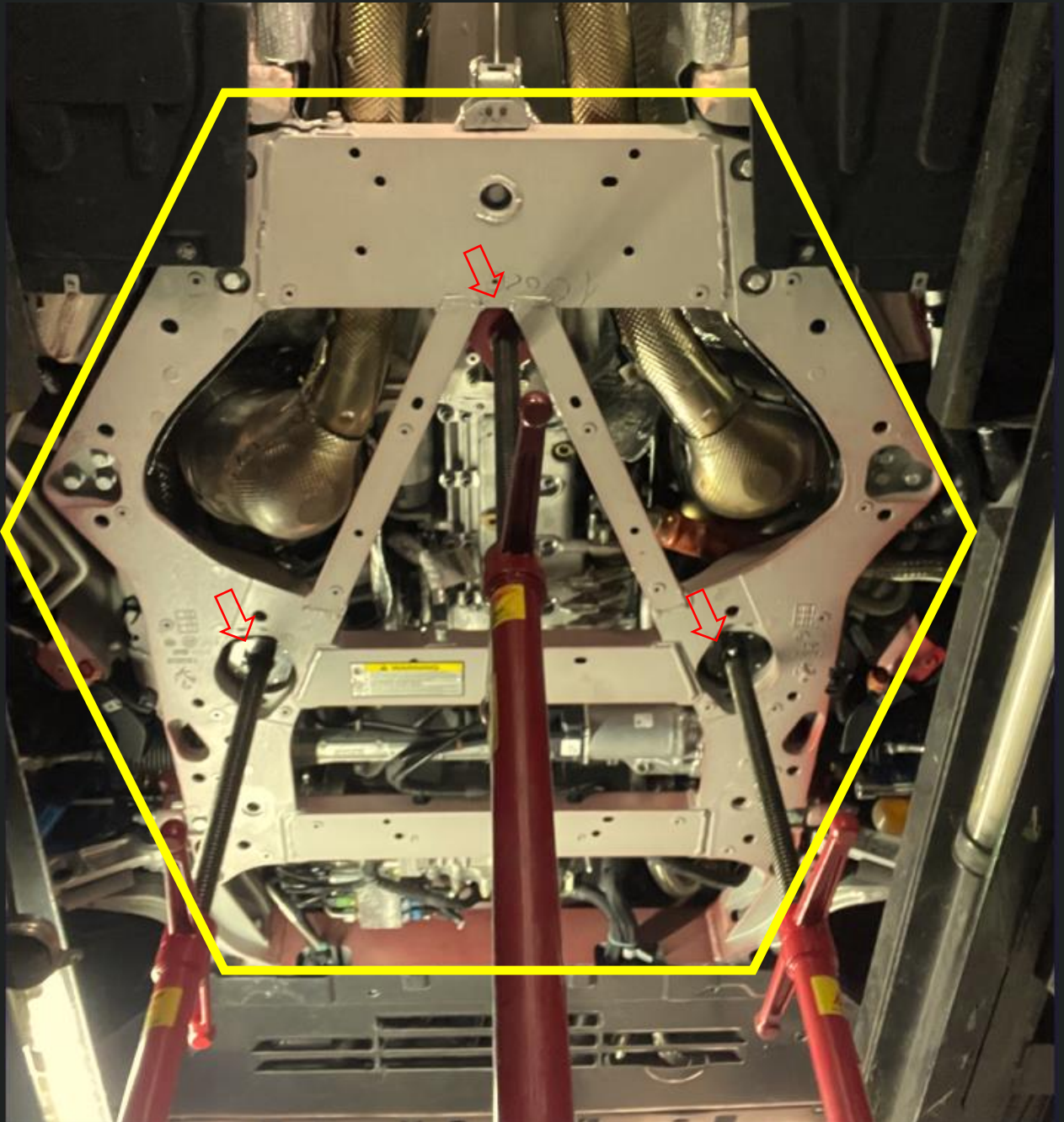


Figure 18

Stock System Removal

Remove the Oxygen Sensor Wire Fixing Screws, Disconnect the Plugs, and Take Out the Wires. After removing the catalytic converter section, remove the oxygen sensors (Figure 19).

Loosen the Front and Rear Exhaust Pressure Pipe Nuts (Figures 20 and 21), Remove the Fixing Nuts for the Exhaust Pressure Pipe (Figure 22), and Take Out the Exhaust Pressure Pipe.

Caution:

- After removing the screws, organize them properly to avoid confusion during reassembly.



Figure 19



Figure 20

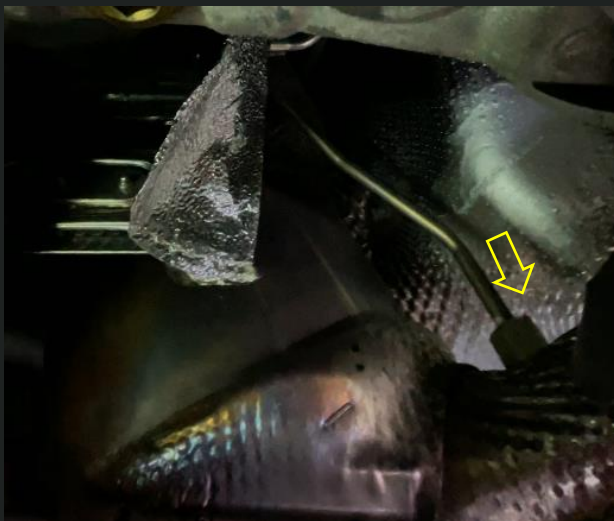


Figure 21



Figure 22

Stock System Removal

Remove the Catalytic Converter Bracket (Figure 23)

Loosen the Front Clamp of the Catalytic Converter, and Remove the Catalytic Converter Section (Figure 24).

Remove the Oxygen Sensors, and Unwind the Wires Once to Increase Their Length (Figure 25).
Caution:

- After removing the screws, organize them properly to avoid confusion during reassembly.

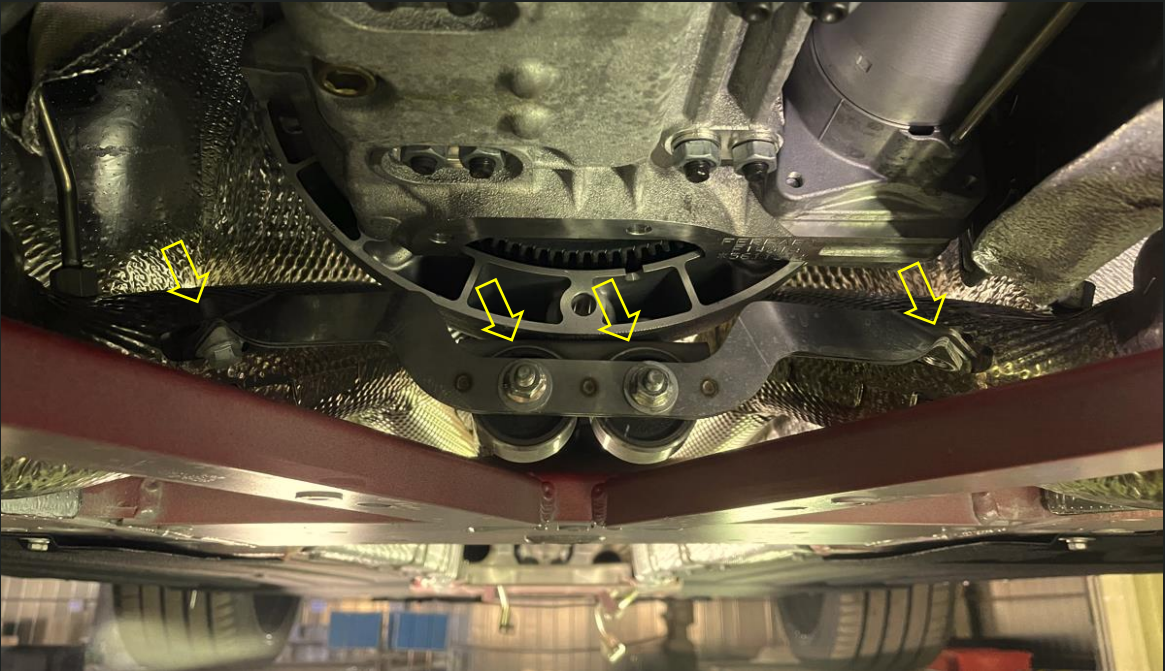


Figure 23



Figure 24

Unwind the Wires Once to Increase Their Length



Figure 25

Installation

steps and Key Points for Installing the iPE Exhaust System

Attach the oxygen sensors to the iPE catalytic converter front section (Figures 26 and 27). Note: Ensure the wires are unwound to increase their length.

Install the front section of the catalytic converter (Figure 28). Do not fully tighten the clamp screws; keep the front section adjustable for alignment.

Secure the oxygen sensor wires to their mounting bracket (Figure 29). Connect the plugs and secure them to the bracket.



Figure 26



Figure 27



Figure 28



Figure 29

Installation

Tighten the Front and Rear Exhaust Pressure Pipe Nuts (Figures 31 and 32).



Figure 31

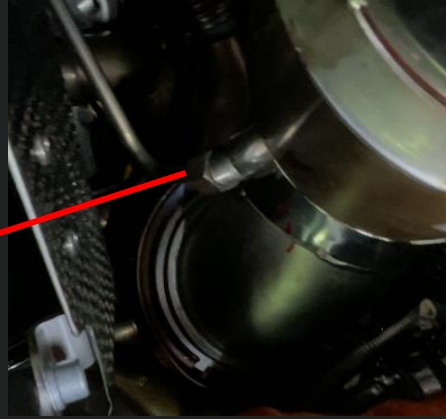


Figure 31

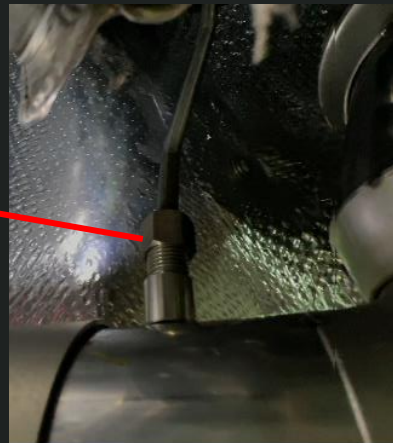


Figure 32

Installation

Install the Rear Section of the Catalytic Converter. Slightly tighten the clamp screws first, adjust the alignment then fully tighten them (Figure 33).

Note: The insertion depth should be 40–45 mm.

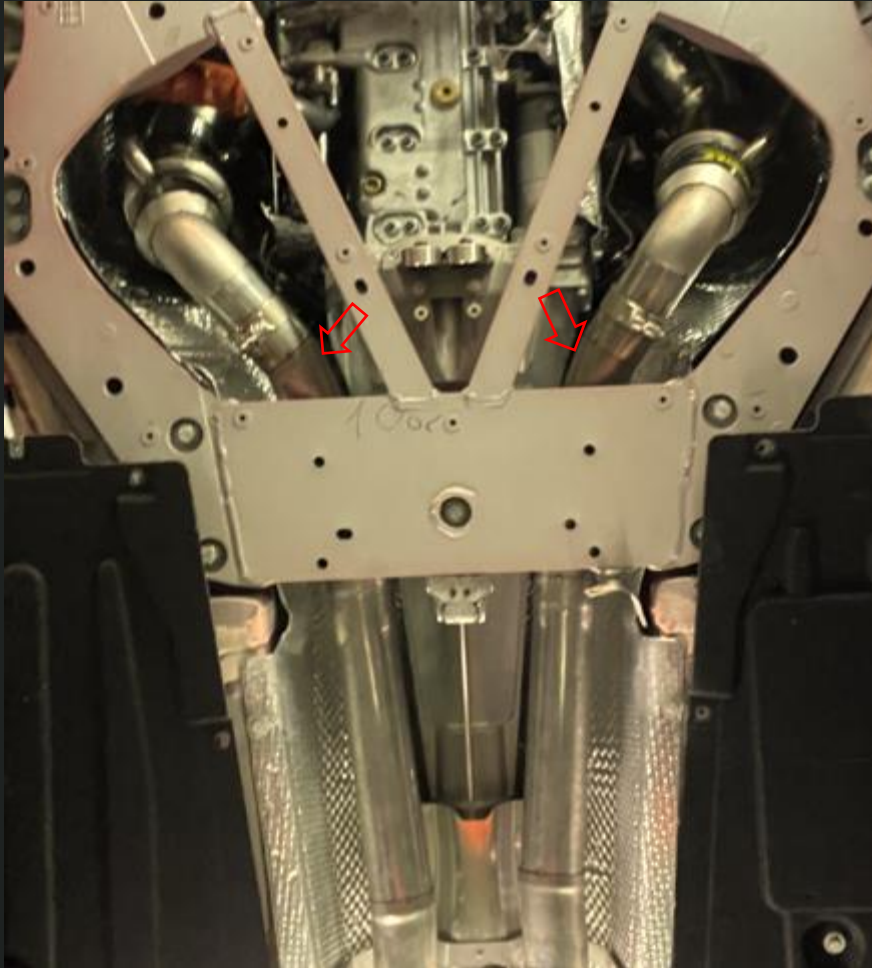


Figure 33

Installation

Reinstall the Chassis Frame and Tighten the Screws, Then Remove the Three Support Rods (Figure 34).

Note: Ensure the screws are tightened with the appropriate torque.

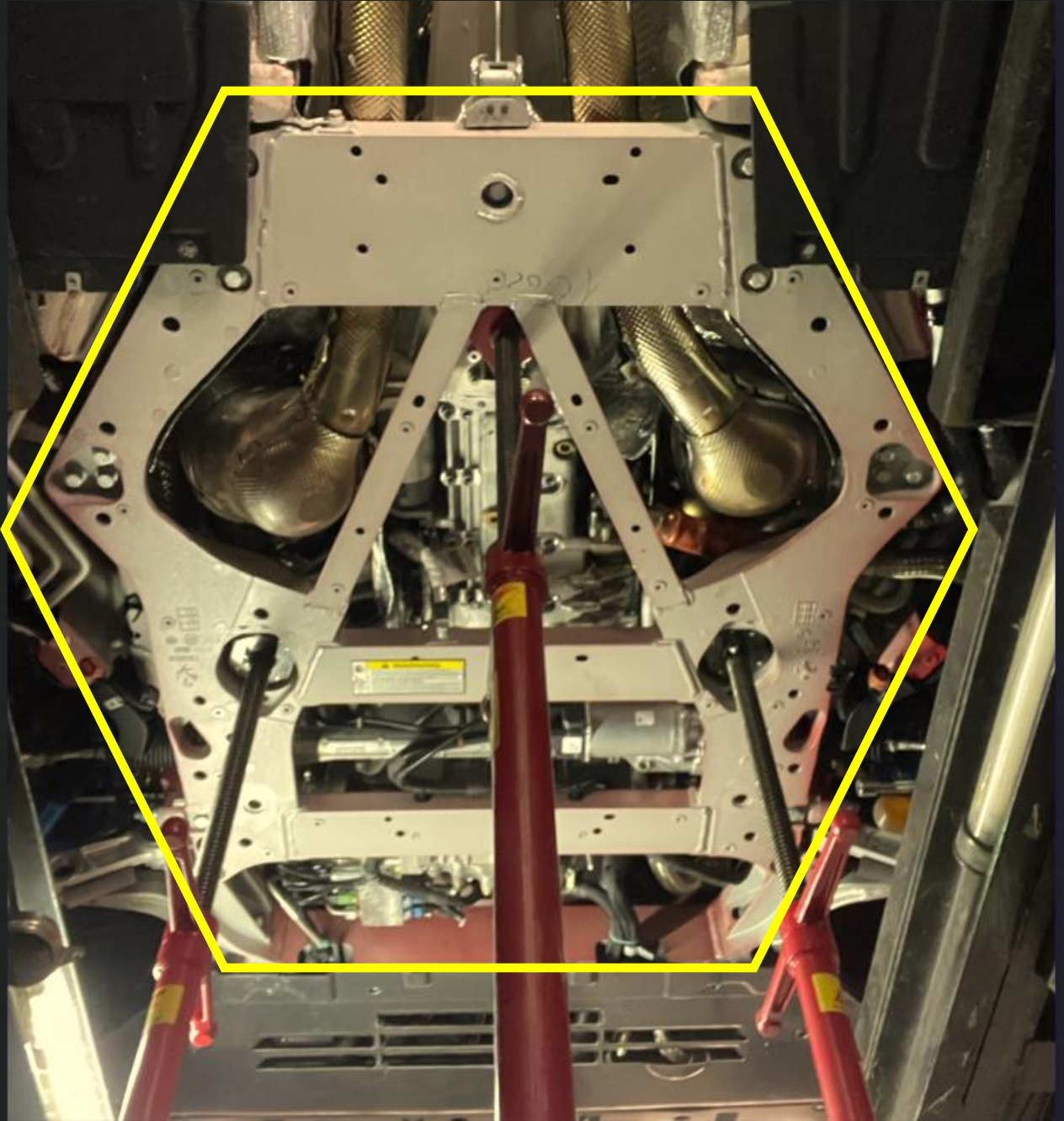


Figure 34

Installation

Install the Midsection and Rear Section, slightly tighten the clamp screws first, adjust the alignment then fully tighten them. (Figure 35 red arrows)

Attach the Rear Section Hanger Bolts and tighten them securely (Figure 35, yellow arrow).

Note: The insertion depth should be 40–45 mm.

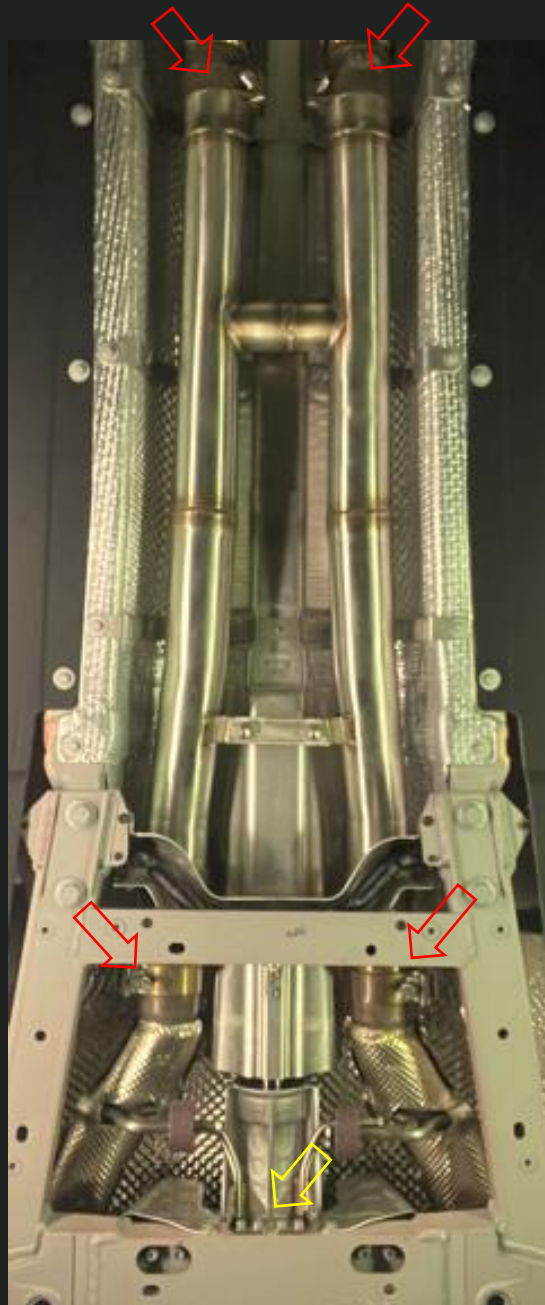


Figure 35

Installation

Install the Tailpipe onto the iPE Muffler (Figure 36 red arrows).

Attach the Original Motors, Motor Baseplates, and Springs onto the iPE Muffler Valves (Figure 36 yellow arrows).

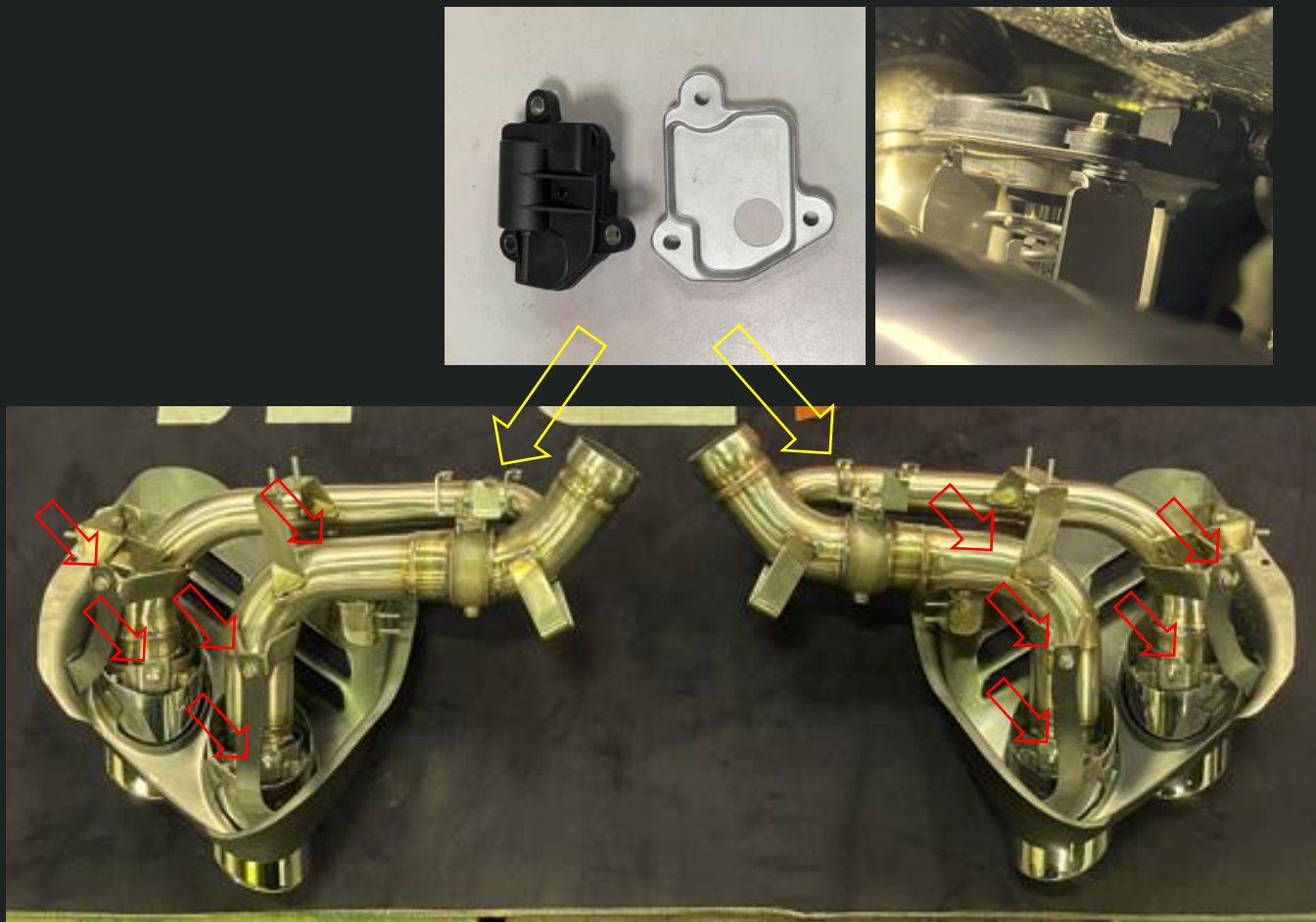


Figure 36

Installation

Reinstall Both Sides of the iPE Muffler and Tailpipe. First, attach the hanger and tighten the nuts. Then, install the inlet clamps on the muffler .

Connect the Motor Plugs (Figure 39).



Figure 37



Figure 38

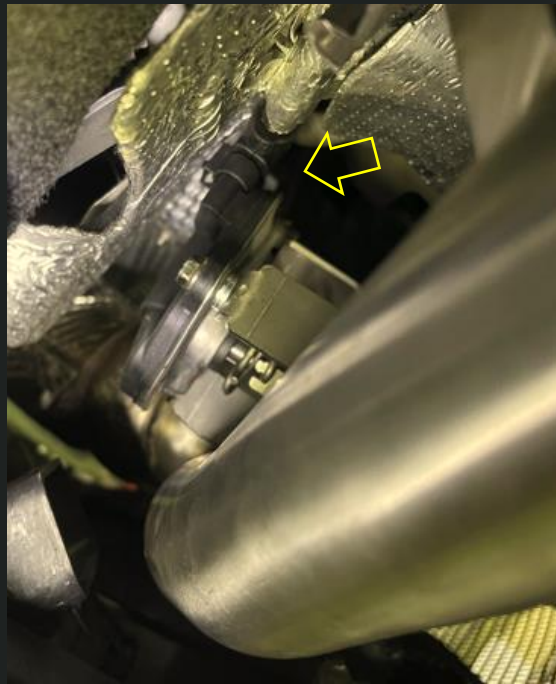


Figure 39

Installation

Adjust and Tighten Sequentially from the Catalytic Converter Section to the Rear Section.

Align the Catalytic Converter Section and the Midsection at the Proper Position, Tighten the Catalytic Converter's Front Clamp (Figure 40), Connect the Front and Rear Sections of the Catalytic Converter, Tighten the Clamp, and Install the Catalytic Converter's Support Bracket (Figure 41).

Note: Ensure screws are tightened with the appropriate torque.

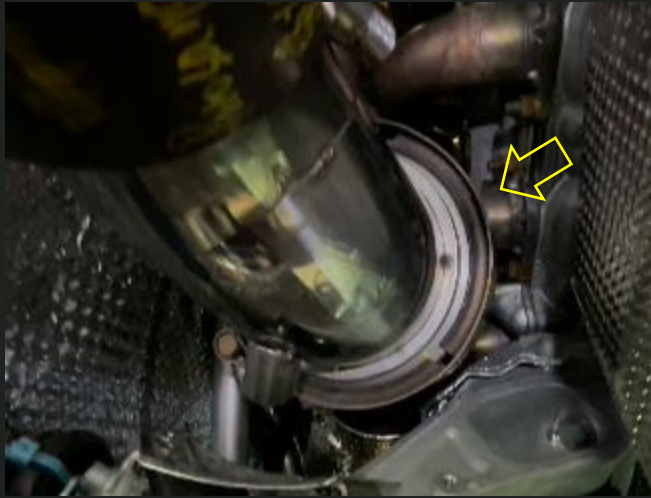


Figure 40

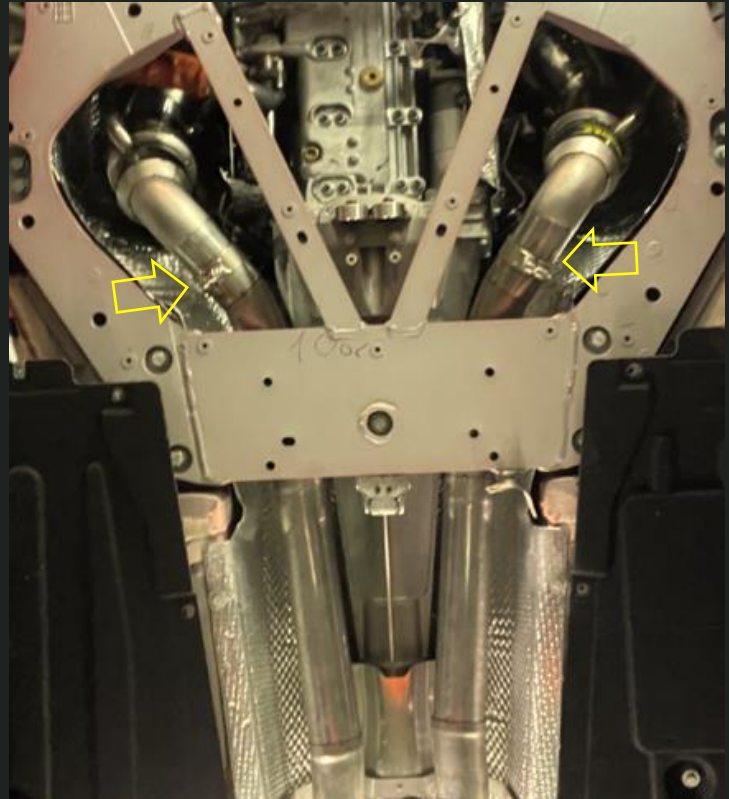


Figure 41

Installation

Adjust the Midsection and Rear Section to the Proper Position, ensure the rear section hanger is horizontal (Figure 42, yellow arrows), then tighten the clamps (Figure 42, red arrows).

Note: Ensure screws are tightened with the appropriate torque.

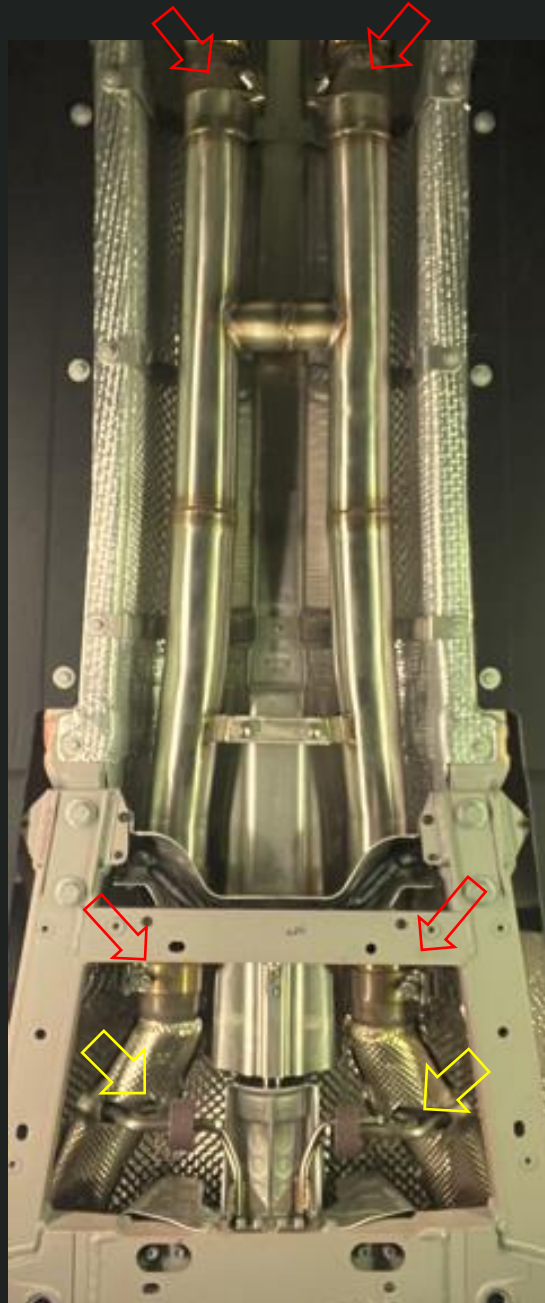


Figure 42

Installation

Adjust the Height of the Muffler and Tailpipes to the Proper Position (Figures 43 and 44), then tighten the hanger nuts to secure the muffler height.

Attach the Connecting Rods on Both Sides of the Muffler and tighten the screws (Figures 45 and 46, yellow arrows). Secure the muffler inlet clamps (Figures 45 and 46, red arrows). Note: Ensure screws are tightened with the appropriate torque.



Figure 43



Figure 44



Figure 45

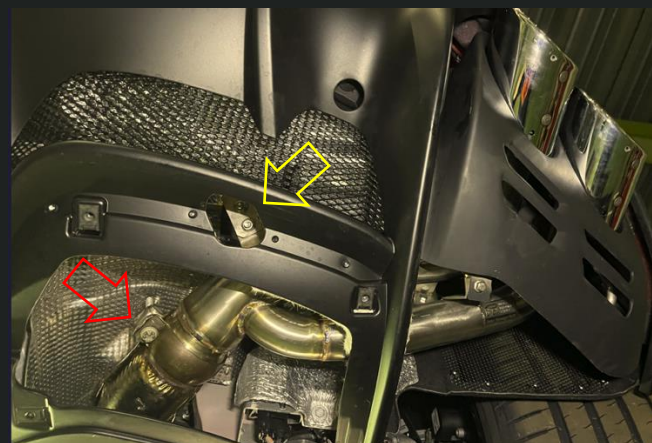


Figure 46

Installation

Reinstall the Rear Lower Panel (3) and the Rear Left Lower (1) and Rear Right Lower (2) Plastic Panels(Figure 47).

Note: Ensure screws are tightened with the appropriate torque.

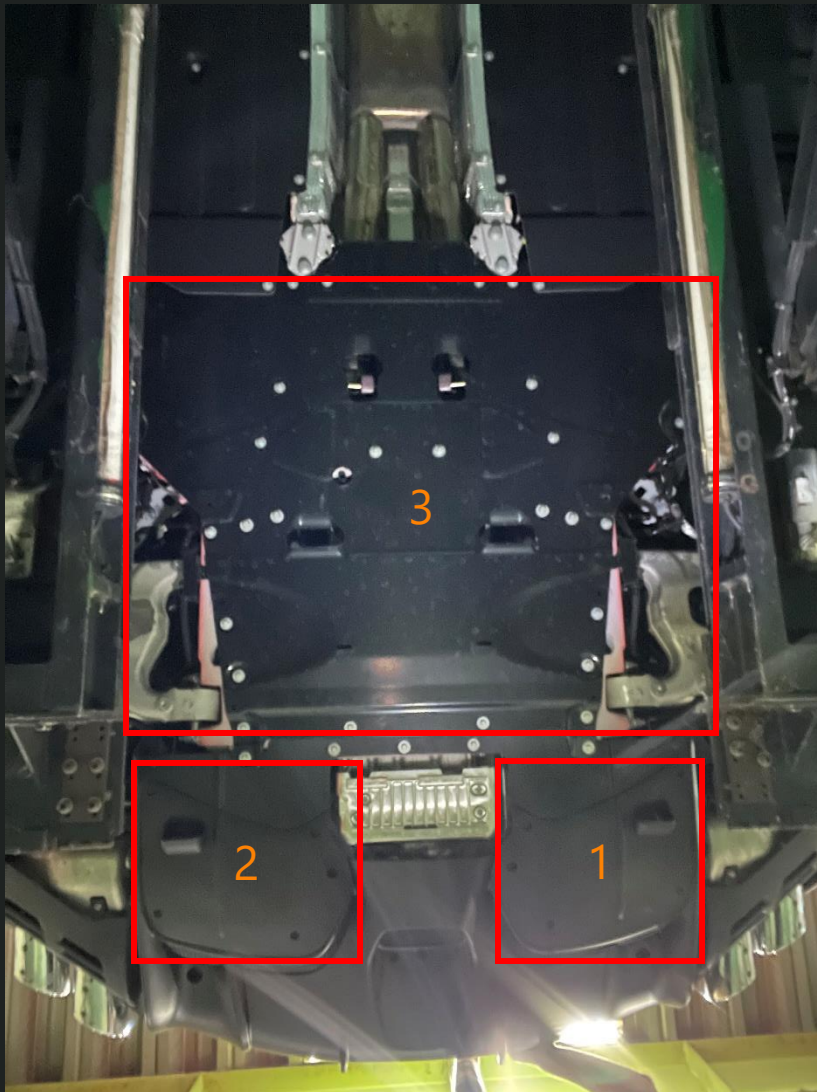


Figure 47

Installation

Reinstall the Front Lower Panel (Figure 48).

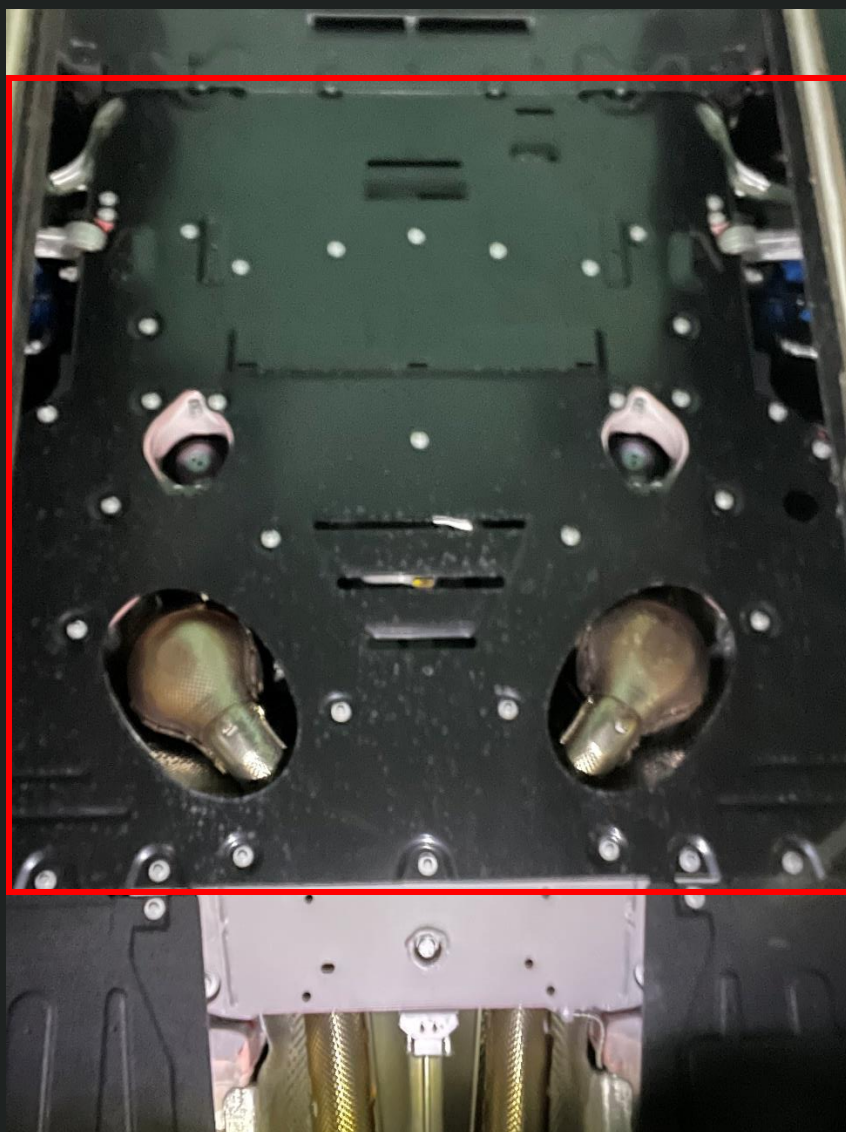


Figure 48

Return & Warranty

1. Product Warranty Period: iPE provides limited warranty services for one year starting from the shipping date. After verifying that the failure occurred within the warranty period by iPE. No inspection, parts, maintenance or other costs will be charged and of these costs will be incurred by iPE. Product warranties are non-transferable.

2. Warranty Policy: iPE's warranty services follows the standard operating procedure (SOP): Repair → Replace → Refund. The principles of this procedure are as follow:

Repair: During the warranty period and under normal usage, iPE is responsible for free repairs if the problem is due to product quality issues.

Replacement: During the warranty period and under normal usage, if the product quality issue arises and is unable to be solved by repairing, iPE is responsible for the free replacement.

Refund: If the replacement of a new product does not resolve the issue and it is the product's quality fault that causes the product to be unable to be repaired and used, please notify iPE within 7 days and iPE will give a full refund including shipping costs.

3. Product quality problems which are not included in the warranty includes:

Consumables: Under prolonged use, damaged flanges/screws/flange gaskets/springs/diaphragms/several strips/aluminum adapters... or slight rusting or discoloration of the product is common and natural.

The heat protector (heat wrap or heat shield) is a consumable and has a limited life span. Due to difference in personal usage or frequent disassembly, damage caused by wear and tear is common.

The tips and oxidized blue/purple colors are decorative parts. Before installation, please make sure that the appearance meets the requirements. Once installed and used, the return or exchange of the appearance will not be accepted. Please note that the decorative products will be affected by extreme environments. Therefore, there may be slight discoloration after prolonged use. In order to extend the lifespan of the tips, DO NOT wash with corrosive chemicals.

A friendly reminder, whether it is a 200 cell catalyst or a catalyst-delete pipe, iPE products are designed for motorsport and race track use only. By deleting the catalytic converters or modifying certain parts of the exhaust system, the chances of triggering the CEL 'Check Engine Light' and 'OPF/GPF (Otto Particulate Filter / Gasoline Particle Filter)' warning signal are high in certain car models. Please note, our warranty DOES NOT cover this or any software incompatibilities.



Return & Warranty

We recommend remapping the vehicle's ECU to prevent potential faults from occurring. The OBD control system adopts the CAN communication mode. If the vehicle itself does not support this mode or there are other OBD interface devices and taps in the vehicle. The OBD control system cannot be controlled normally, in this case, it is not covered by the warranty.

In order to protect the integrity and functionality of the exhaust system. During Valve OFF Mode, the valves will automatically open when it reaches 4,000 RPM as a safety precaution.(Remind that the remote controller needs to install the accelerator signal line and set properly.) (For example, when the car is accelerated to approximately 3,000 RPM, as a safety precaution in automatic mode, the manual mode control process requires the user to open the valves in time for safety measures).

4. Product damage which results the violation of normal usage, accidents or natural disasters is not covered by the warranty. Under the situations mentioned above, iPE will not be responsible for the cost of maintenance/inspection, parts and potential transportation fees.

5. iPE's warranty commitment to the product is limited to the quality issue of the product itself. Warranty commitments shall be limited to the product itself and shall not exceed the selling price of the product; to the fullest extent permitted by law, iPE shall not be liable for other damages (including but not limited to vehicle collisions or accidents, personnel maintenance costs, transportation costs, vehicle owners or employees, environmental issues, safety issues, loss of profits, and other related personal losses.)

6. Transformation of the iPE product's ownership will cause the warranty to be voided automatically.

7. If personal modifications are made to the iPE exhaust system or application of non-iPE standard accessories such as fire, heat protectors or ceramic coating are used. iPE will not be responsible for the damages and the warranty will be voided automatically.

8. The purchase of iPE 's exhaust system does not include the labor costs for initial installation, removal, and subsequent installation/inspection process.

9. Due to various environment such as temperature, humidity or any natural causes. There may be some slight rusting and/or discoloration after prolonged use. This is normal wear and tear and will not be covered under the warranty.

10. iPE warranty does not cover any product modifications without the consent of iPE and the warranty will automatically become invalid; if the modifications is made with the consent of iPE, except for the warranty failure for the modified part. Other products are still under the warranty commitment by iPE.





PERFORMANCE REDEFINED

www.ipeofficial.com

