



Product Installation Manual

BMW 840i(G15)

Content

1. Announcement	-----	3
2. Tools	-----	4
3. BMW 840i Product Assembly	-----	5
4. Steps for disassemble stock exhaust	-----	6
5. Instruction for iPE exhaust	-----	12
6. Instruction for iPE valvetronic system	-----	18











1. Announcement



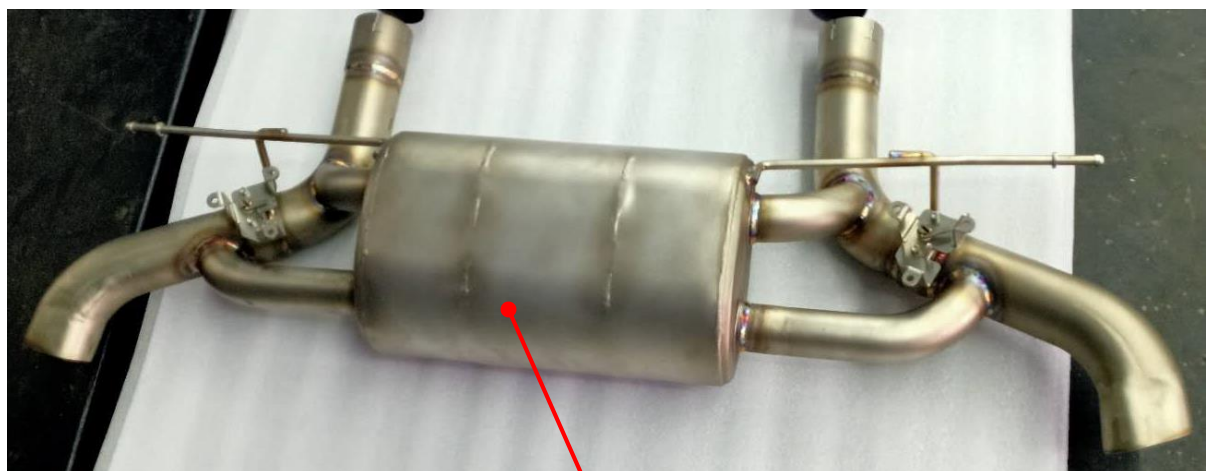
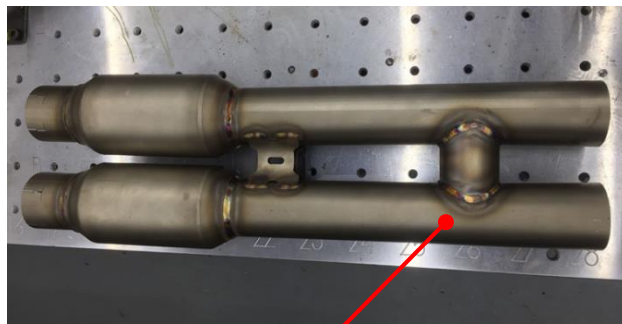
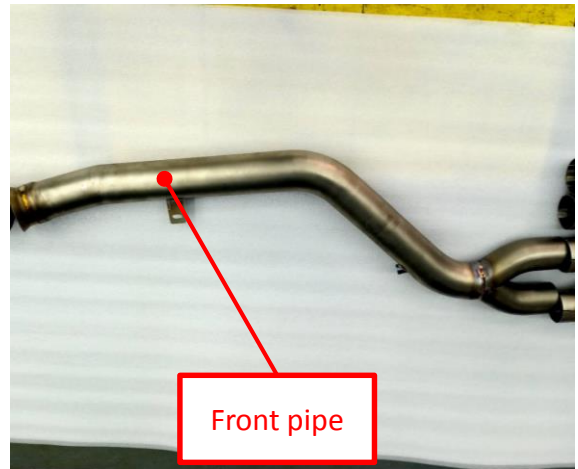
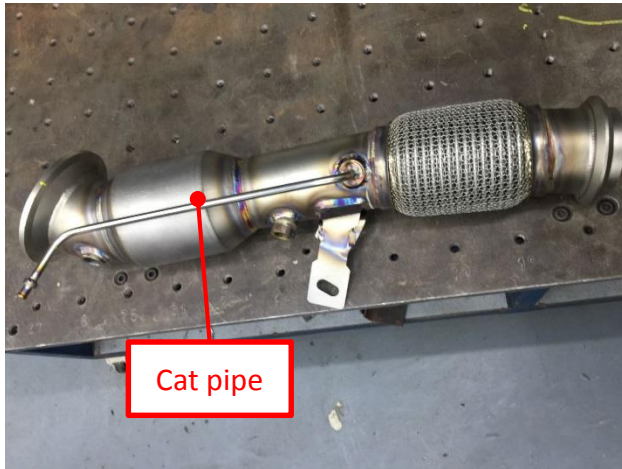
WWW.IPE-f1.com

1. Please read the installation manual carefully before installing the iPE exhaust system.
2. Please install the system by a technician related to the exhaust system of the car or a technician who is familiar with the IPE exhaust system.
3. This manual provides detailed installation instructions to ensure the correct installation and use of the IPE exhaust pipe; in case of improper use or disassembly, the company will not be responsible for any loss or personal injury.
4. When installing the iPE exhaust, please lock it according to the torque value in the manual to avoid abnormal damage to the screws thread.
5. Make sure the exhaust is already cool down. °
6. The iPE exhaust is designed based on the factory engine data. If the ECU has been upgrade, may cause some unusual noise and vibration with the system. iPE can provide custom design for these type of car, please contact us for more detail. °
7. If you have any questions about the installation of iPE exhaust system, please contact your iPE local dealer or contact us : info@ipe-f1.com °

2. Tools

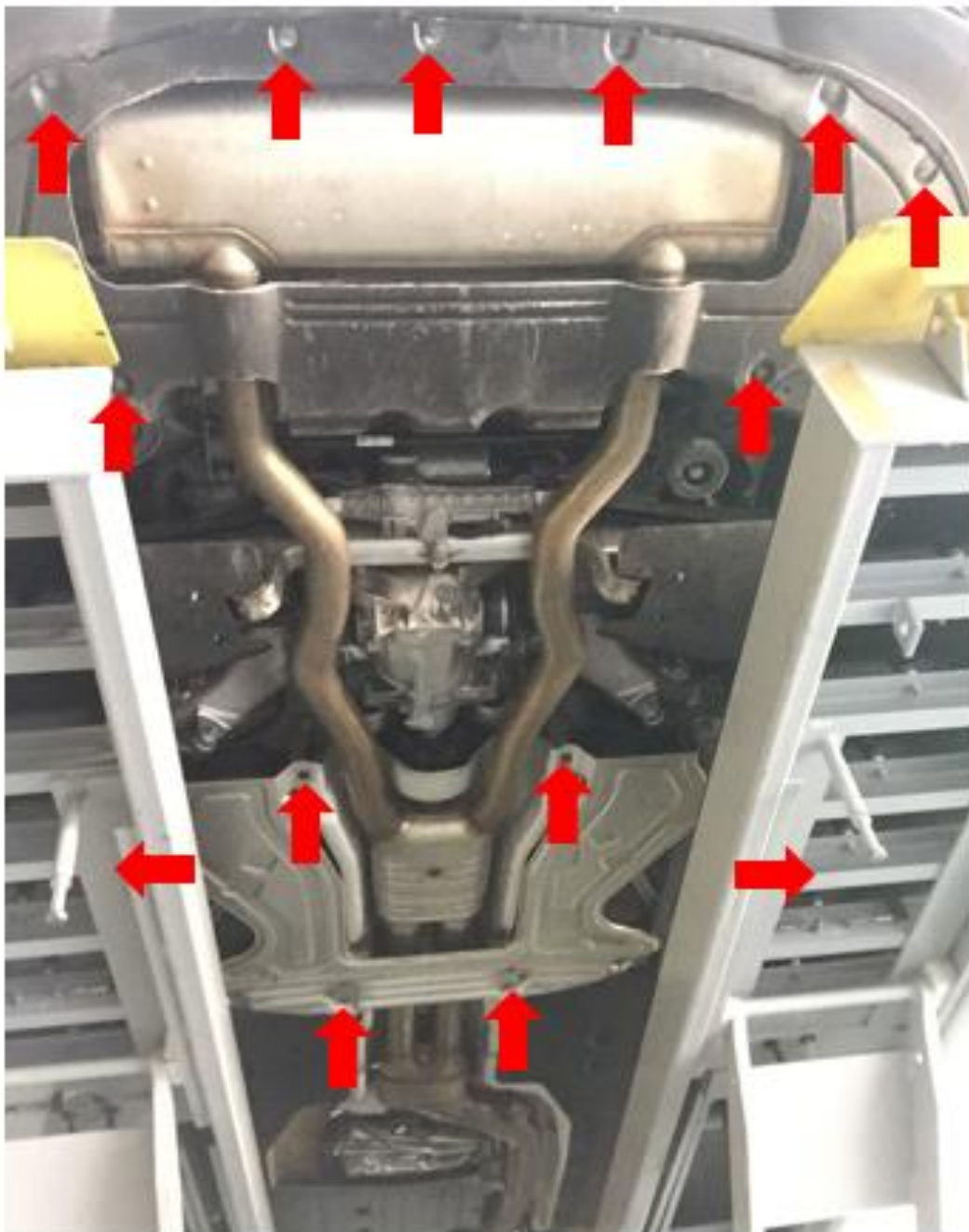
Degreasers / Lubricant	 
Sockets 10、12、13、14mm	 
Wrenches 12、13、14mm	 
Torque Wrenches	 
Allen key sockets	 

3. Product assembly

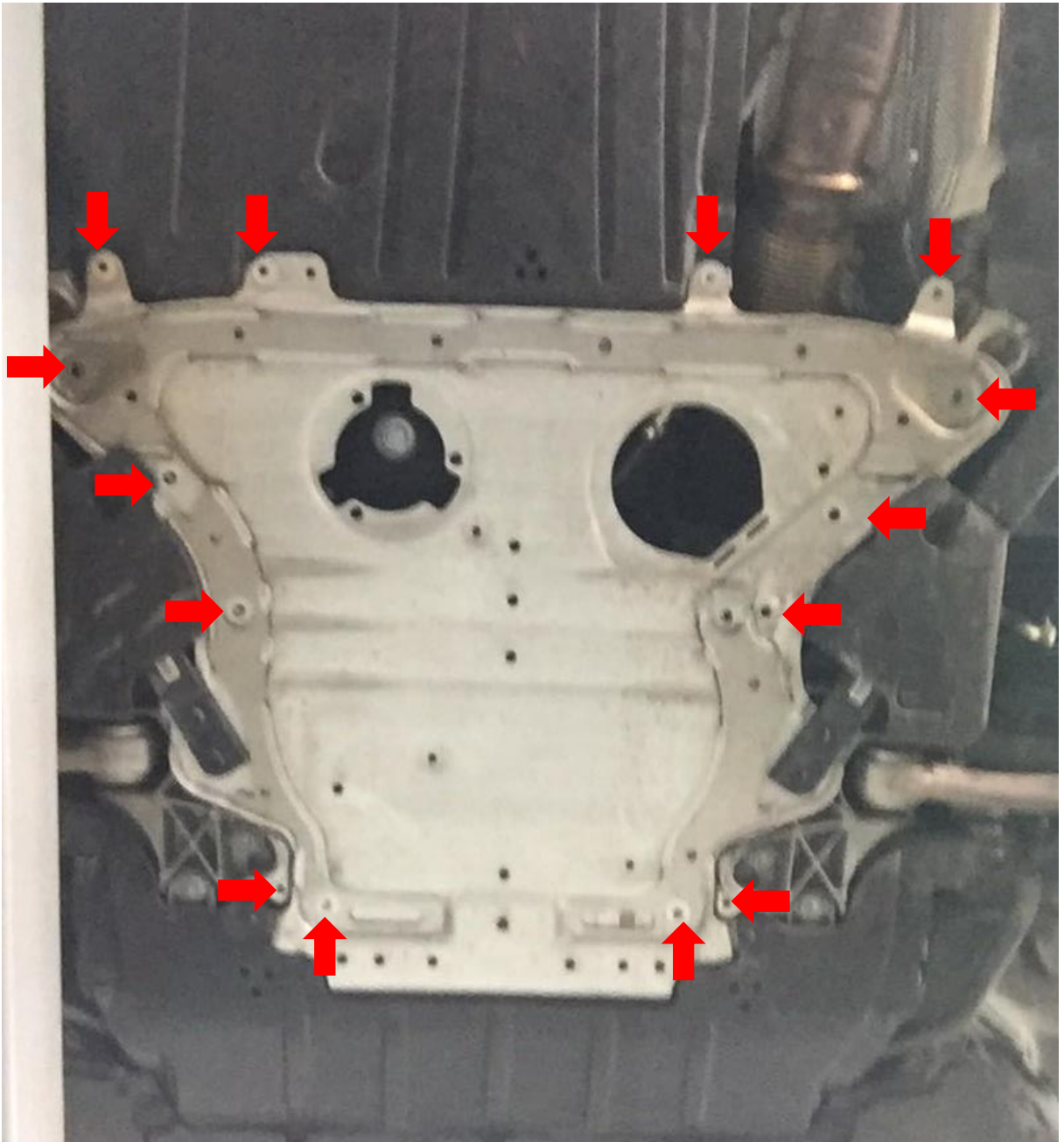


4. Steps for disassembled OEM exhaust

1. Remove the rear and middle undercover



2. Remove the front undercover



3. Remove temperature sensors from the exhaust
4. Remove the hanger and unscrew the butts from the exhaust



No. 3

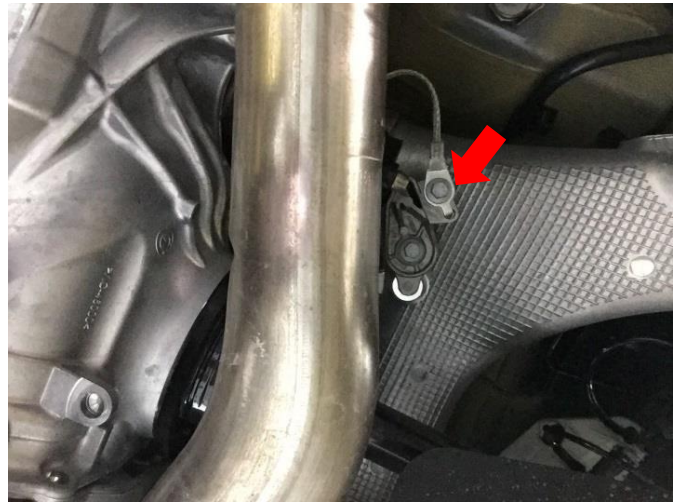


No. 4

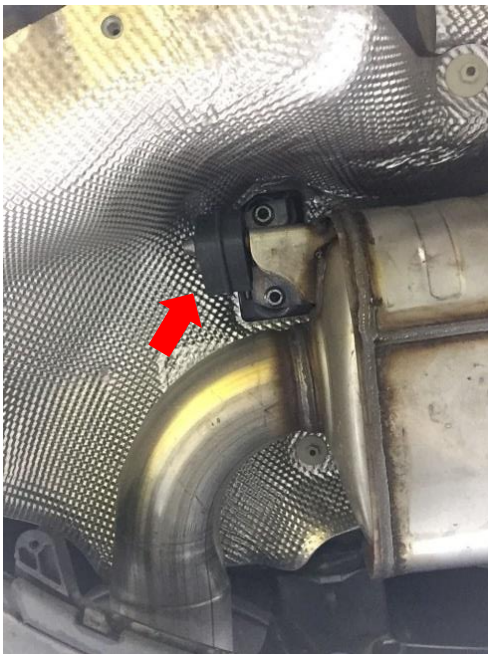
5. Remove the middle hangers.

6. Remove the OEM valvetronic module and the rear hanger.

After these steps, you may remove whole OEM exhaust.

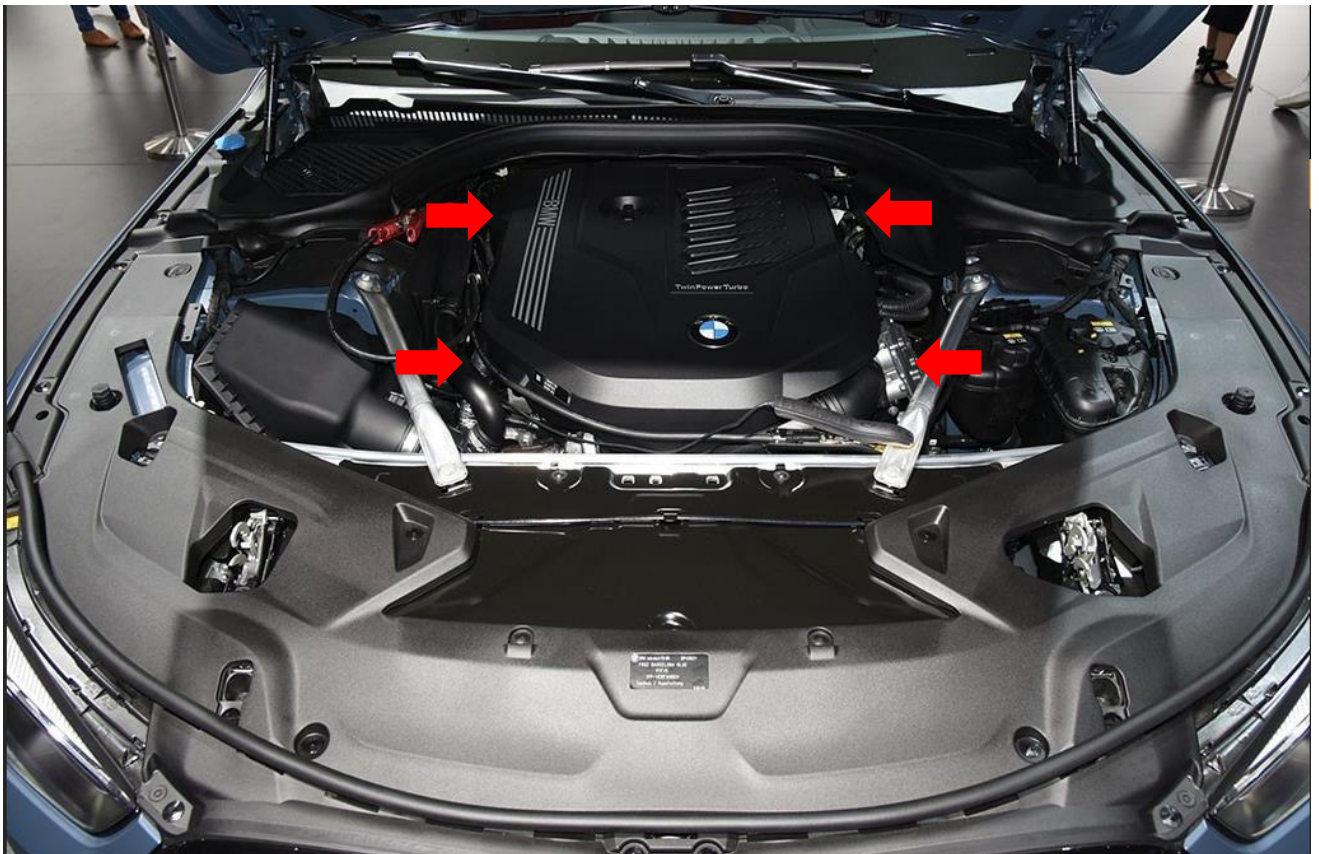


No. 5



No. 6

7. Remove the engine cover and unscrew the heat protector



8. Remove the pressure hose, O2 sensor, bracket, screws and the OEM catalytic converter

Please use a special socket to remove the O2 sensor

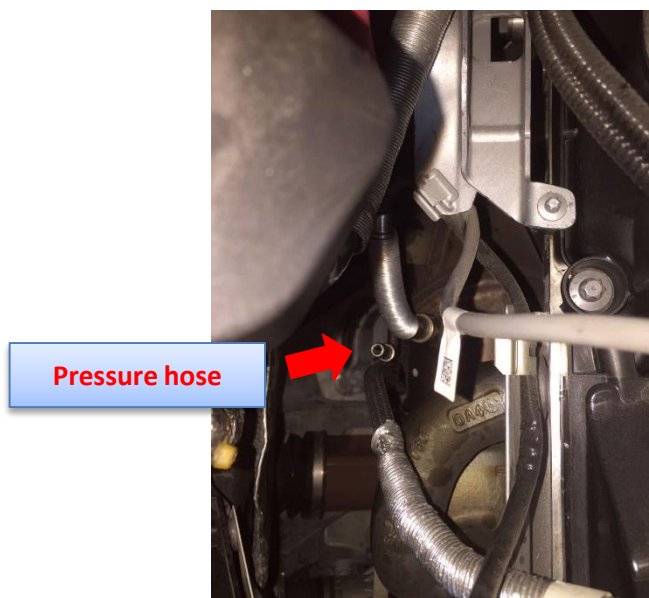
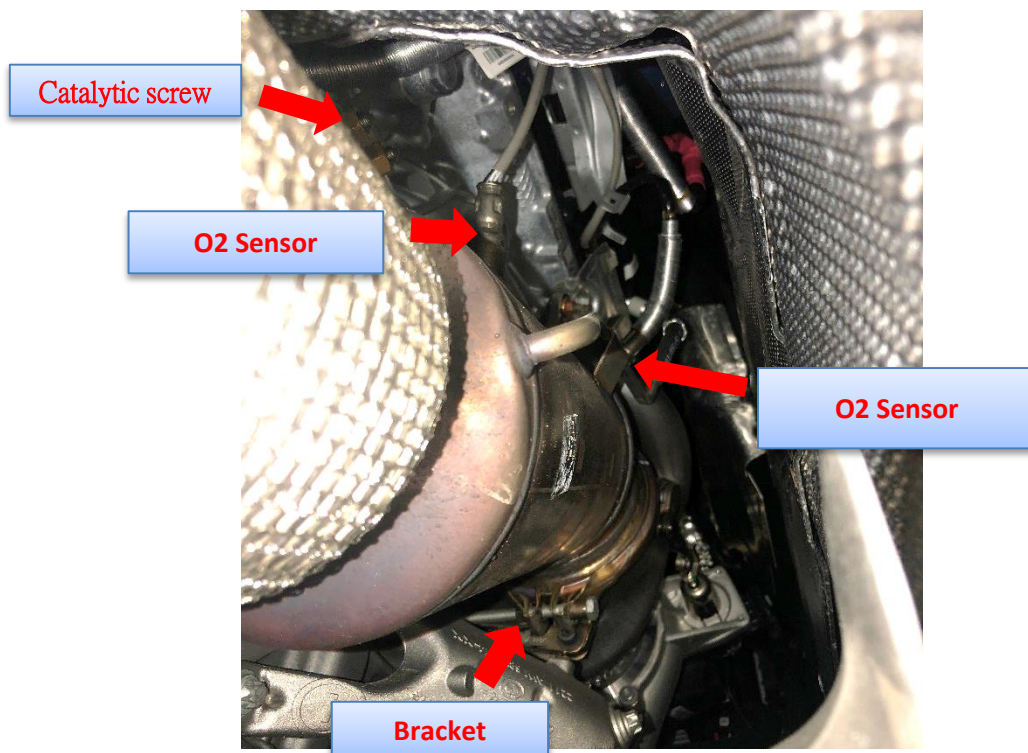
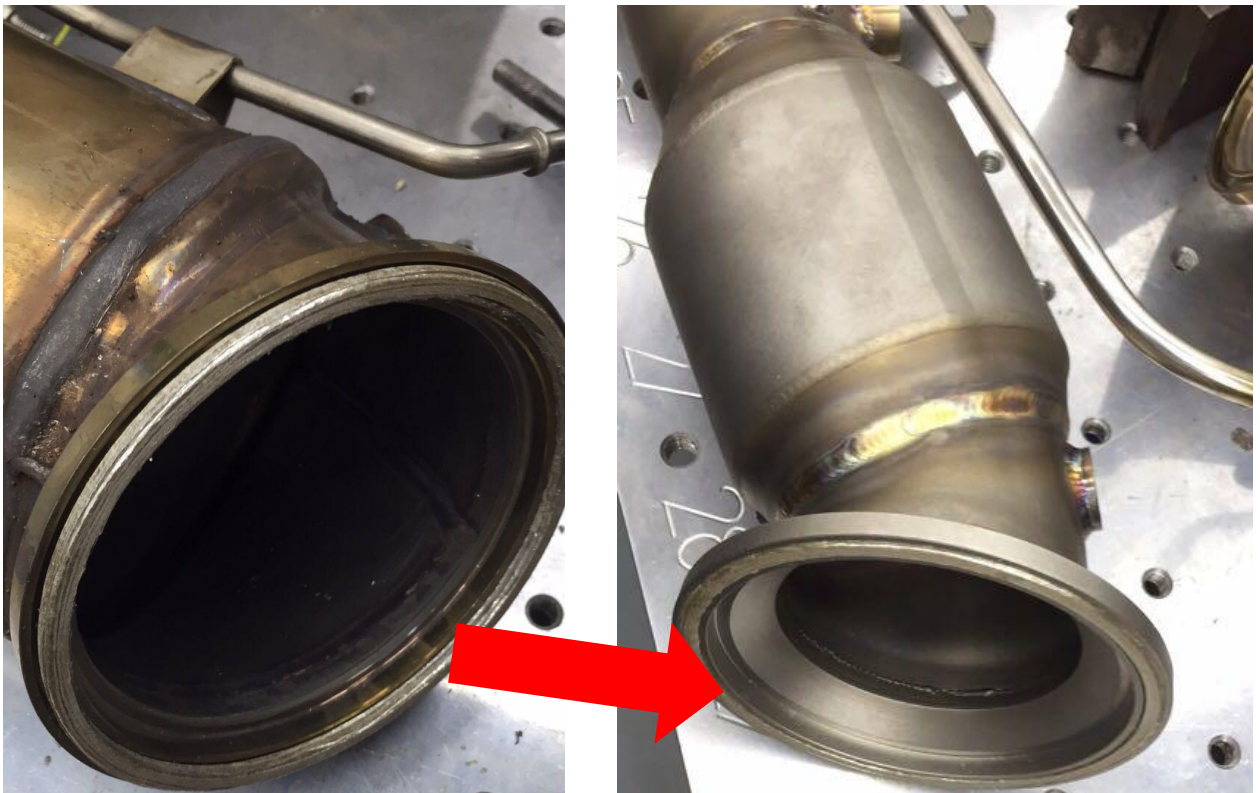


圖 7



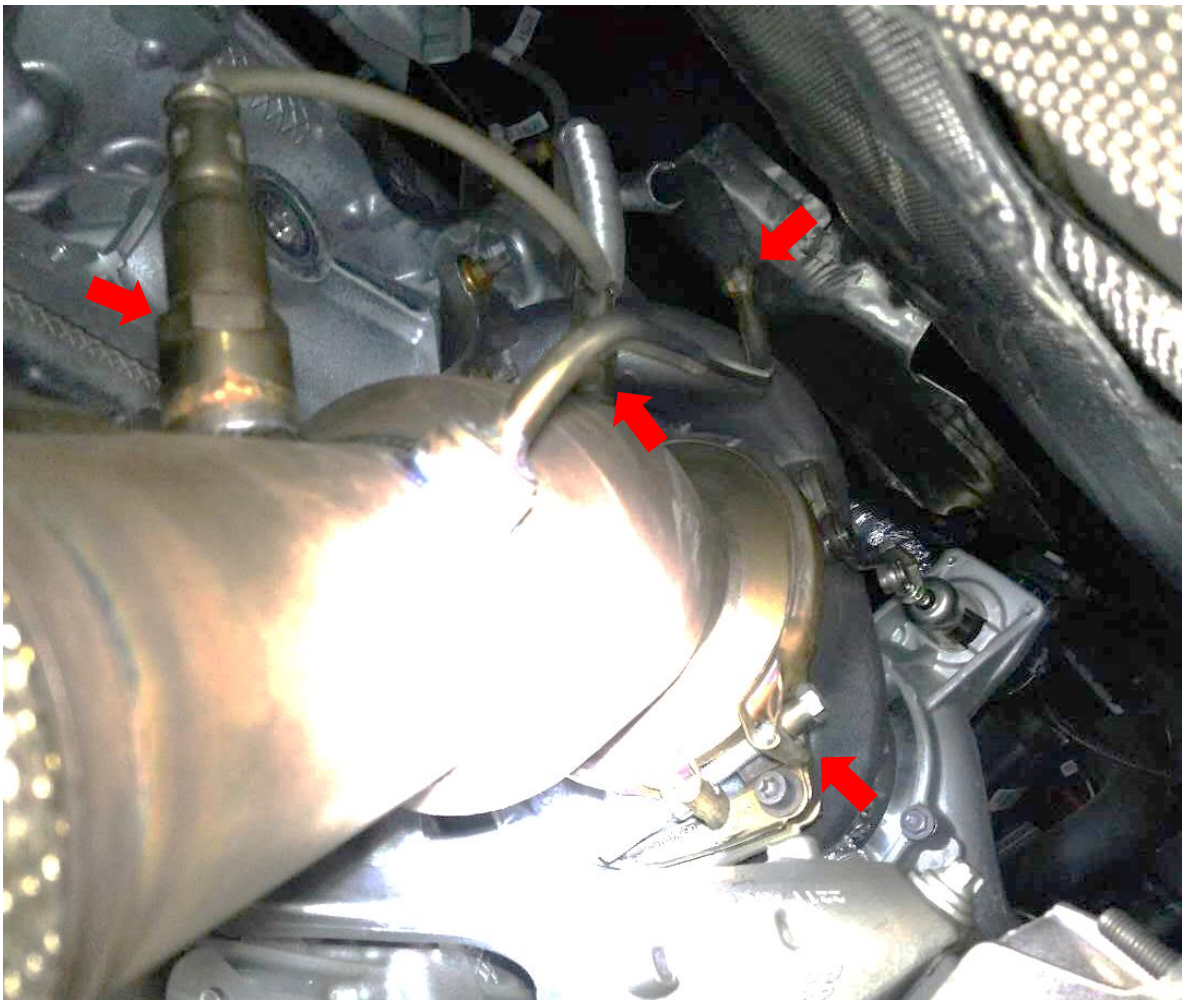
6. Instruction for iPE exhaust

1. Remove the OEM exhaust gasket and put on the iPE catalytic converter

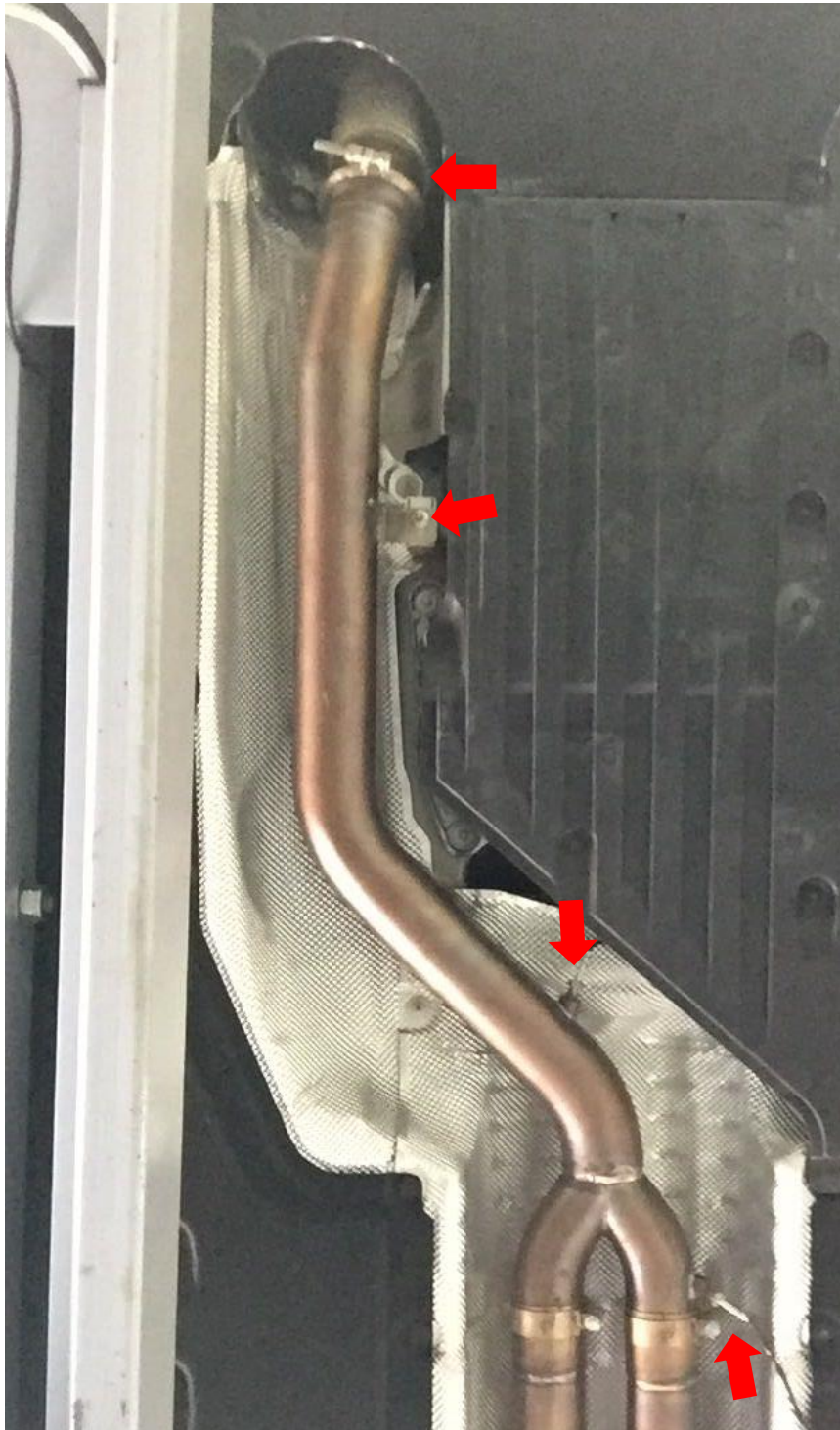


2. Install the catalytic converter and make sure everything is attached and back to the right place after your installation

Make sure hand tie each attachment first before everything is in right place.



3. Install the front pipe with brackets. Hand tie the screws first to make some room for the installation.



4. Put on the mid pipe and the exhaust hanger back to the position, make sure everything is tie down.

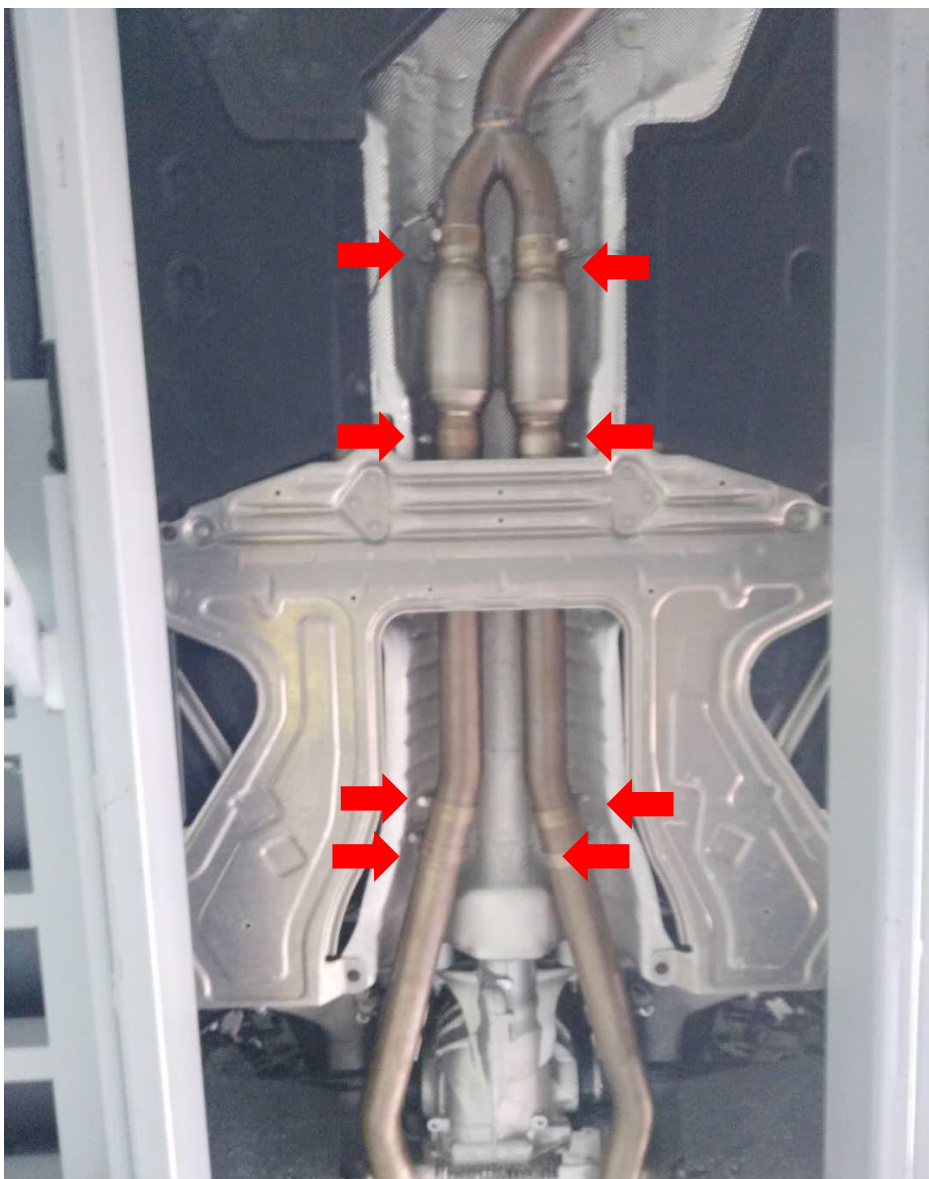
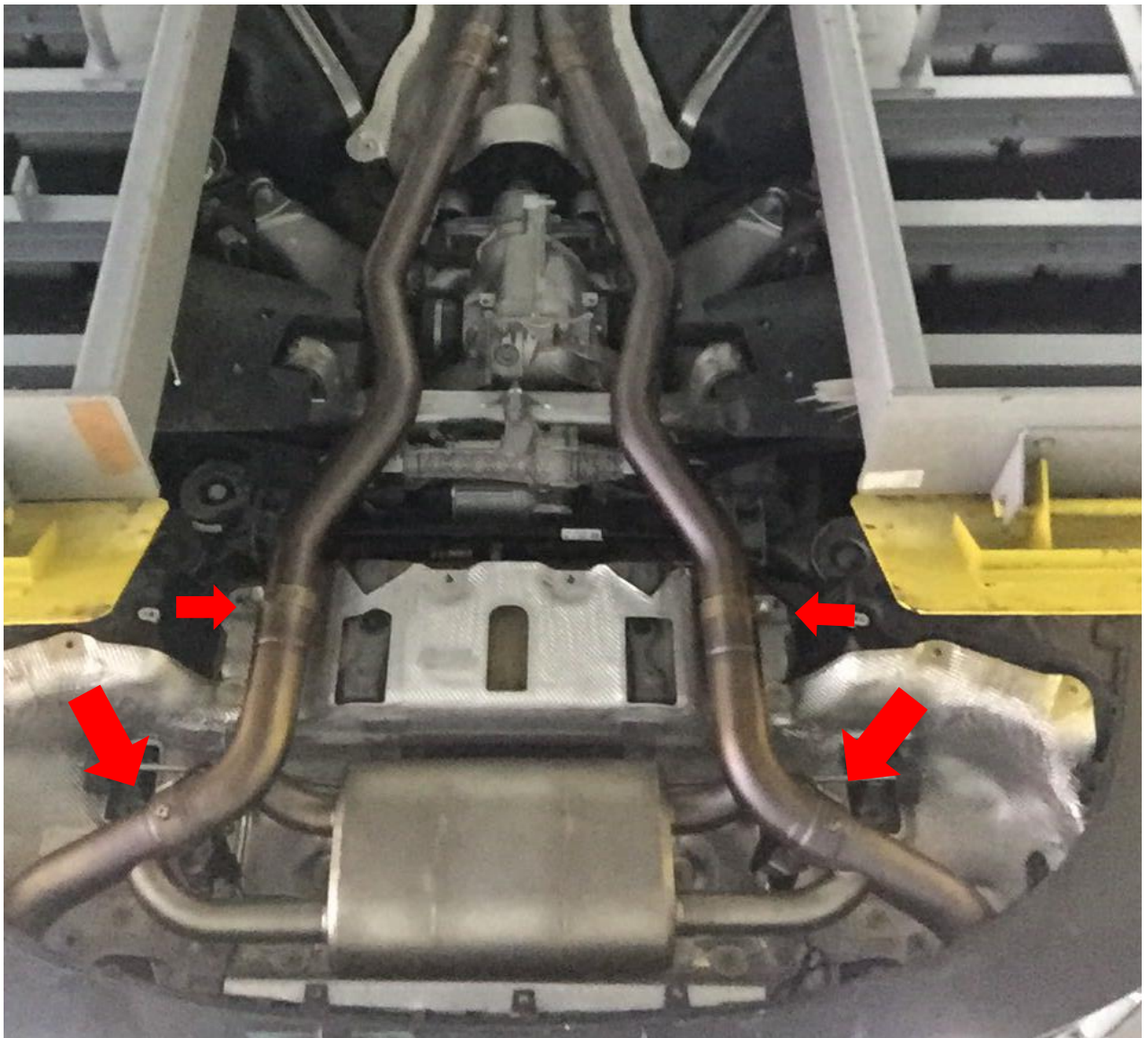


圖12

5. Put on the muffler and tie the hanger back on.
 6. After adjusting the muffler, make sure have 15mm room between exhaust and the bottom of the car.
- Tie the screws and brackets in order of the front pipe, mid pipe and the muffler

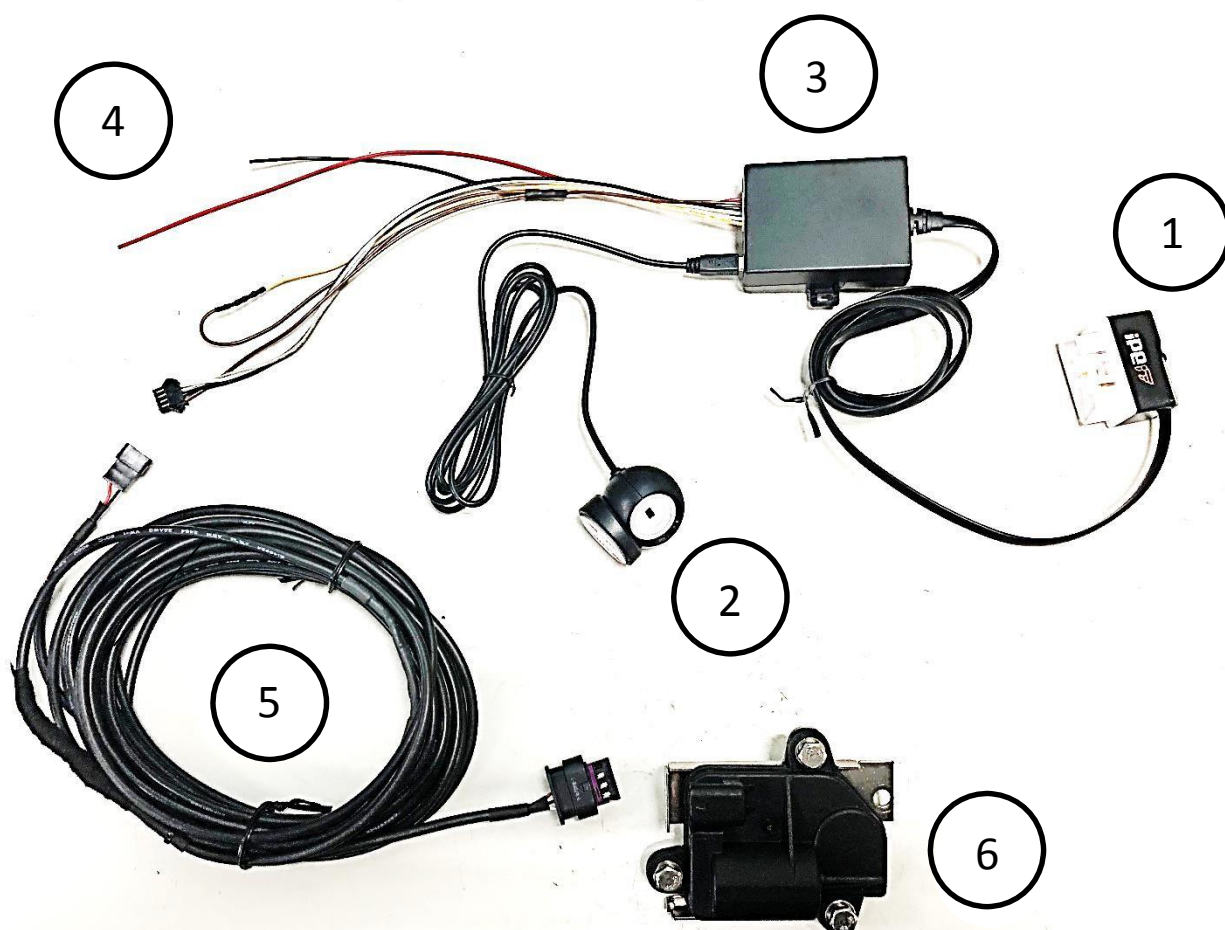


7. Install the OEM valvetronic on the support frame, install the electronic motor with the valve center plate closed, and turn it counterclockwise until the holes are aligned with the nut.

Do not to energize the electronic valve first to avoid failure to install.
The original electronic motor can be directly installed on the iPE exhaust with an iPE spring

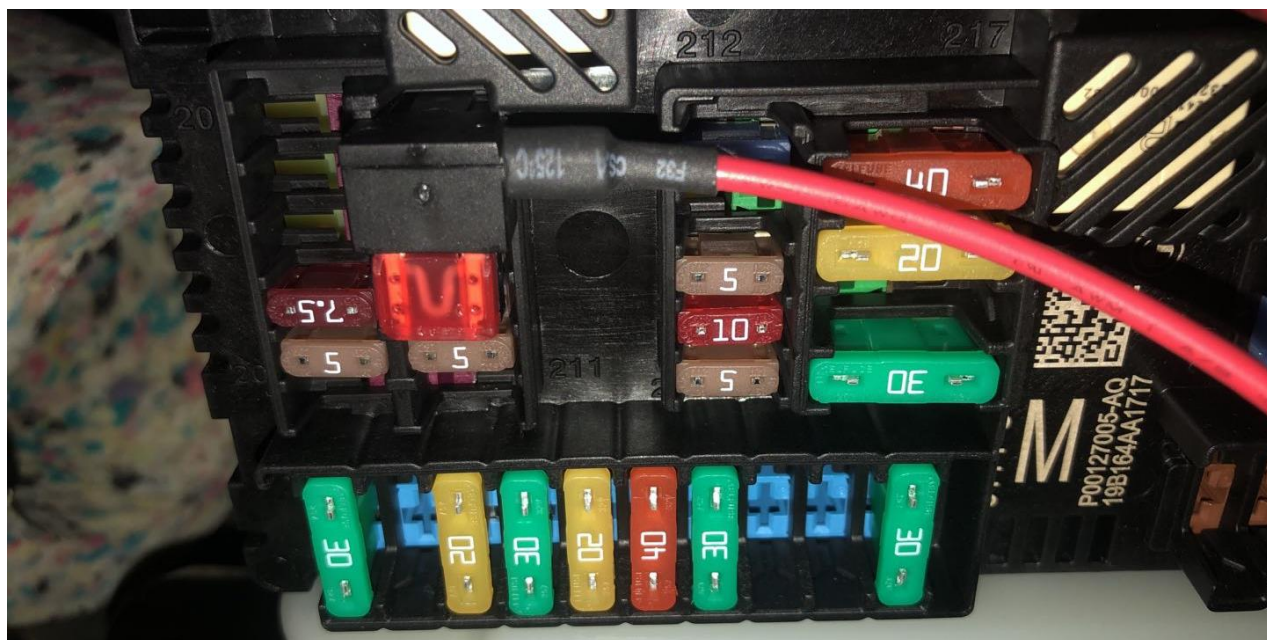


6. iPE valvetronic system



No	Items	No	Items
1	OBD2-Valve reader	4	OBD2 electronic wiring set
2	OBD2 with lighting sensor	5	OBD2 wiring set
3	OBD2-valve controller	6	BMW factor valvetronic motor

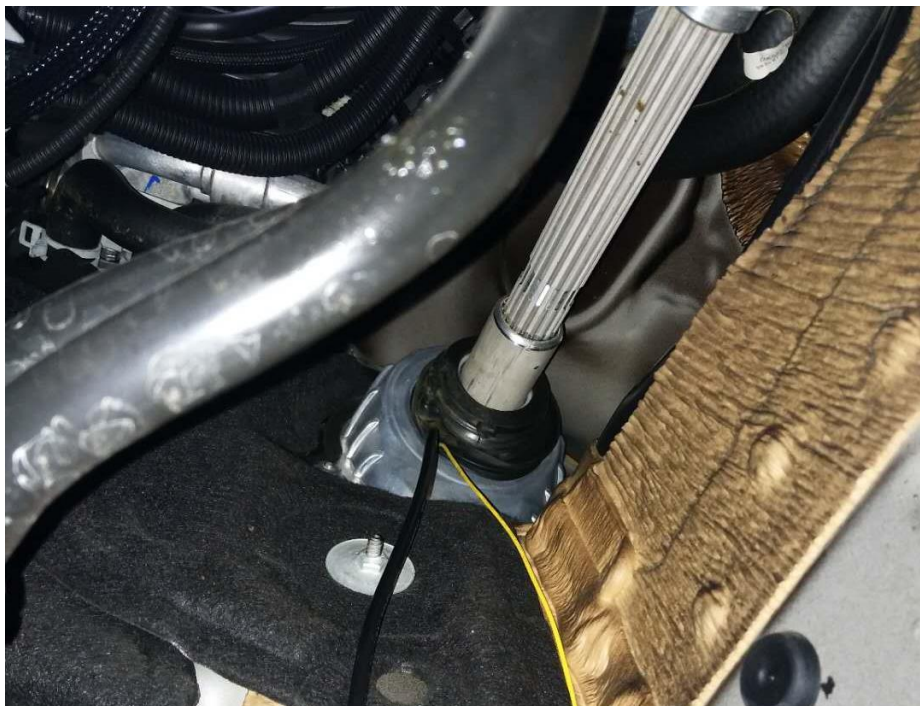
1. Test the ACC positive charge from the fuse box on the right rear of the trunk and pull it under to the front driver's seat



2. The OBD power cord is inserted into the car through the rubber at the bottom of the car, and the positive pole is passed out of the bottom of the car.



3. Plug in the electric motor and pull the wire to the left front engine room.



4. Remove the interior trim panel of the driver's seat, and then pull the cable into the car to install the OBDII control box and other accessories. After the cable is installed, restore it and connect to OBD II

