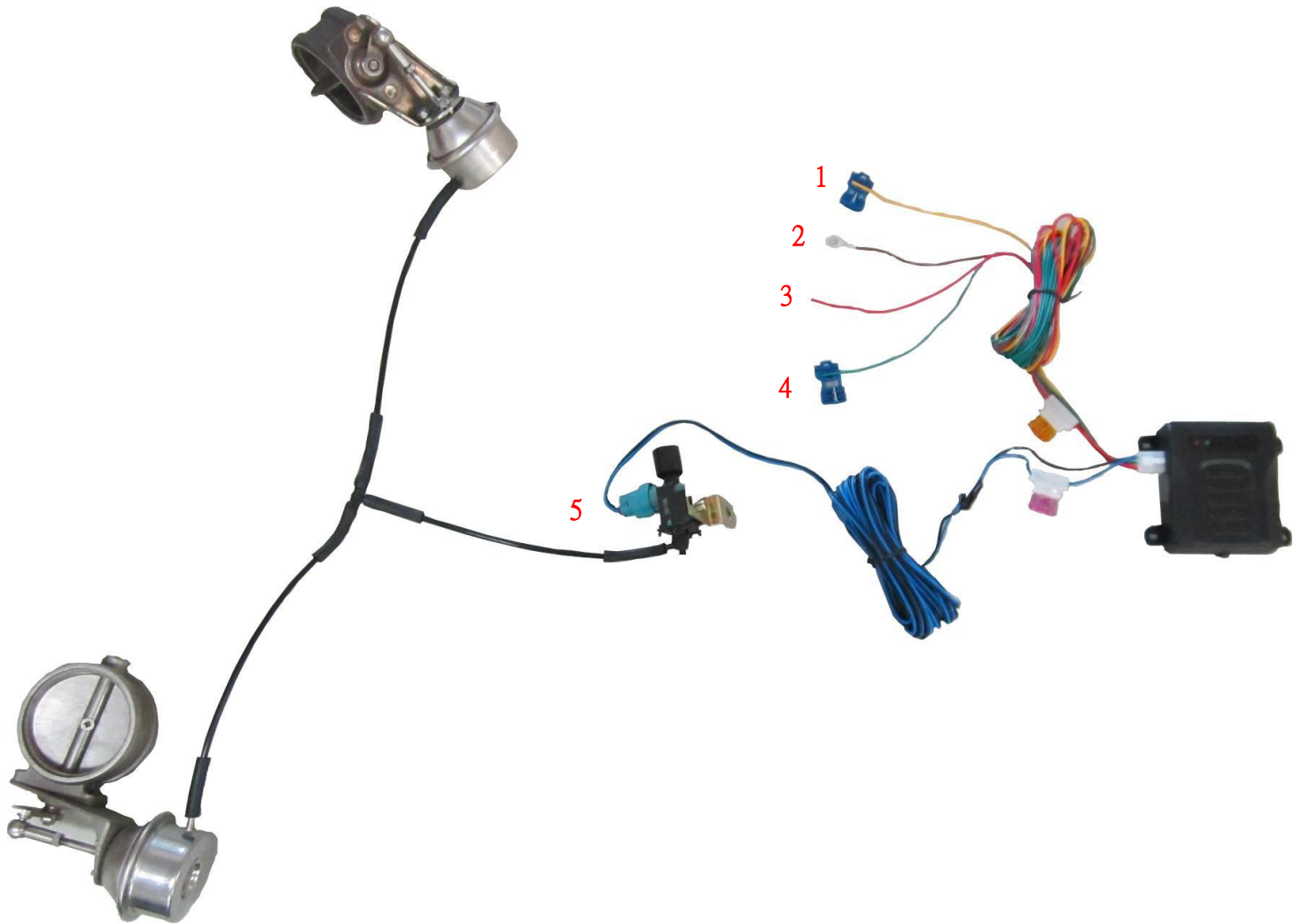


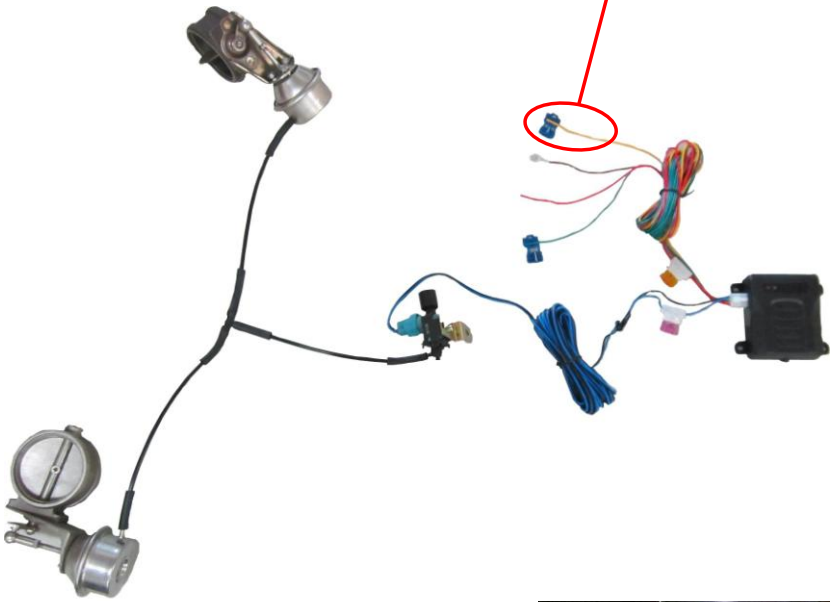
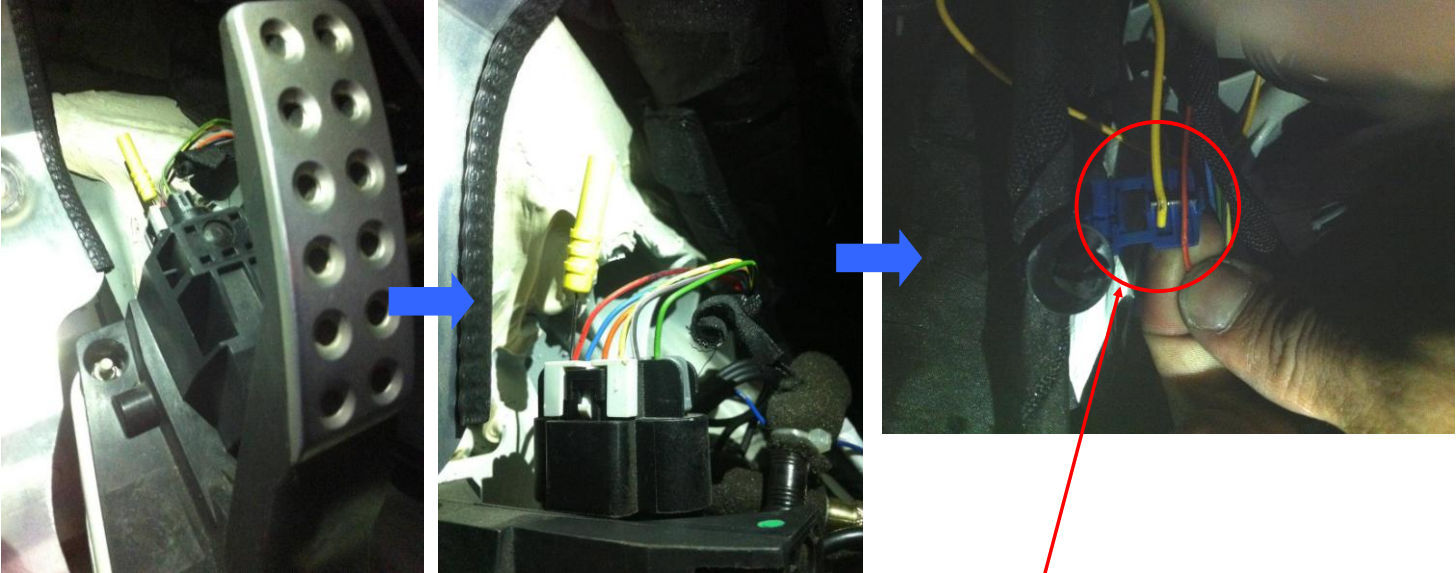
FERRARI F458 INSTALLATION MANUAL

一、REMOTE CONTROL SYSTEM FOR YOUR REFERENCE

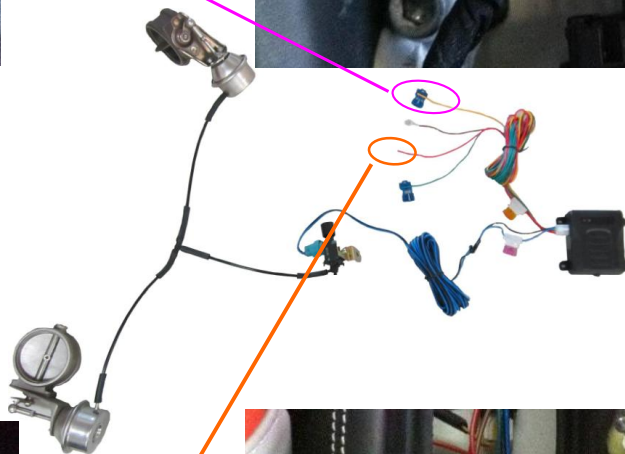
1. YELLOW CABLE: TPS VOLTAGE SIGNAL 0~5V
2. BROWN CABLE: GND
3. RED CABLE: KEY POWER ON SWITCH
4. GREEN CABLE : RPM
5. ELECTRONIC VALVE



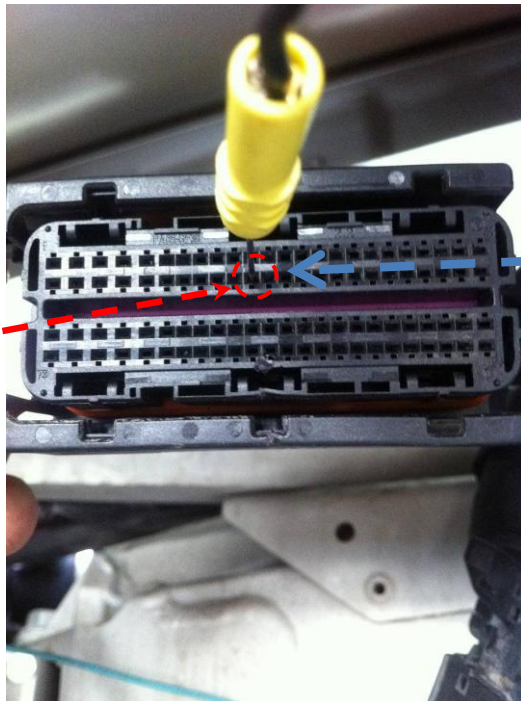
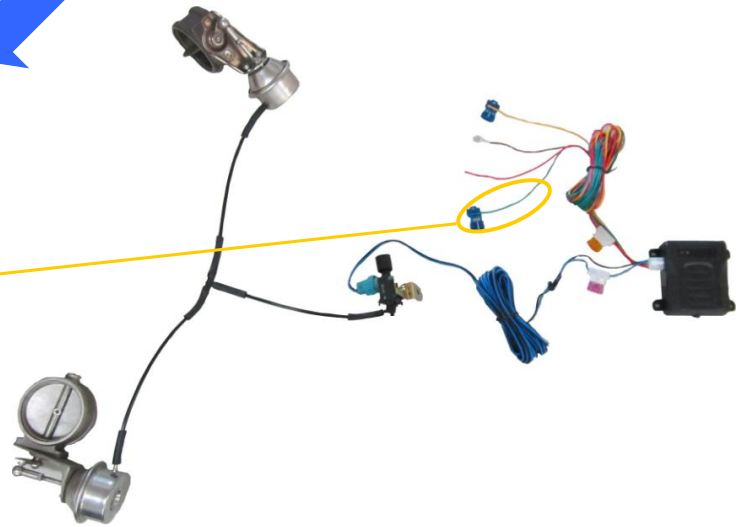
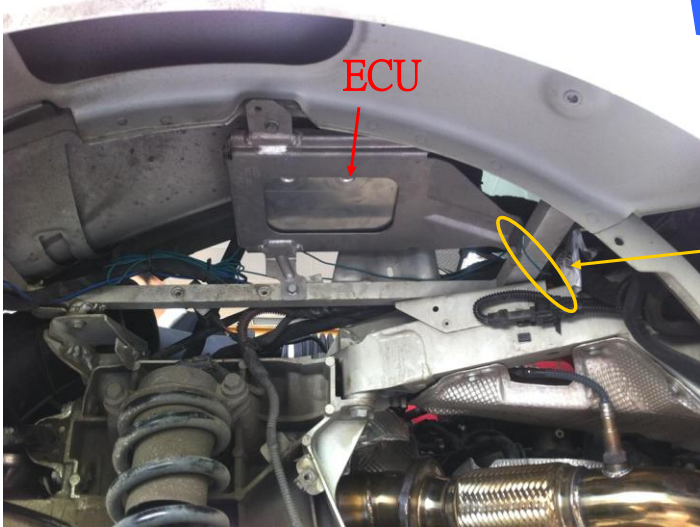
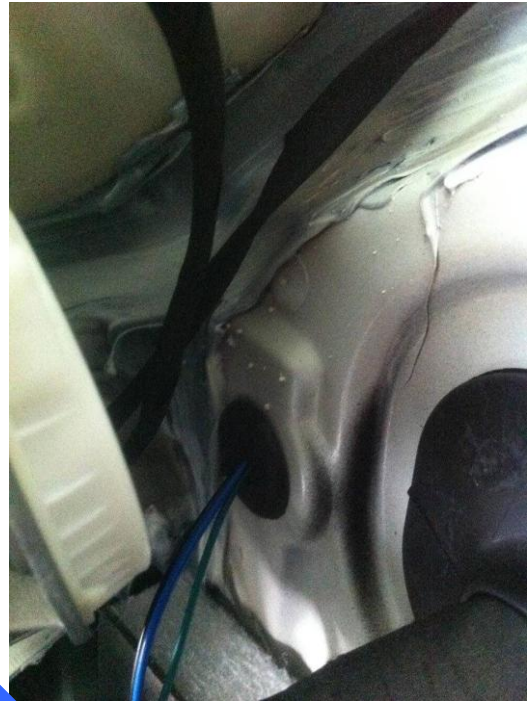
2、YOU CAN FIND ELECTRONIC ACCELERATOR IN THE BACK OF GAS PEDAL, THEN PUT TPS(YELLOW CABLE) AND OEM RED CABLE OF ELECTRONIC ACCELERATOR SIDE BY SIDE.



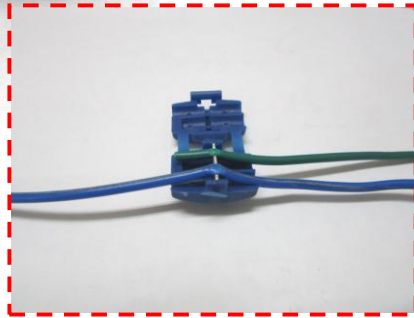
1、RED CABLE CONNECT WITH OEM GREEN/WHITE CABLE.



3、GREEN CABLE : RPM AND ELECTRONIC VALVE



BLUE
CABLE
35PIN



F458
35 pin

BLUE CABLE 35PIN CONNECT WITH
GREEN CABLE : RPM

